

# Lower Duwamish Waterway Roundtable Virtual Meeting Agenda (v.9-13-22)

## Wednesday, September 28, 2022 | 5:30-7:30 PM

(Participants may check in beginning at 5:00 PM)

### Meeting Purpose:

EPA will present an overview of the early cleanup design for the Upper Reach of the Lower Duwamish Waterway. EPA will seek input from Roundtable members about how the activities at each location within the cleanup area may affect residents, tribes, industry, habitat, fishers, and recreationists for consideration in subsequent planning documents in the design of the cleanup.

### In this meeting we will:

- Hear technical updates from EPA on the early design of the Upper Reach cleanup.
- Discuss technical updates in small groups (*suggested discussion questions provided*).
- Discuss questions and feedback from the caucuses about EPA's updates in a large group.
- Hear updates from Roundtable members and members of the public.

### Roundtable Purpose and Structure:

[The Lower Duwamish Waterway \(LDW\) Roundtable](#) is a forum for those affected by the cleanup of the [Lower Duwamish Waterway Superfund Site](#) and local agencies to work together on mitigating the impacts of the cleanup on the affected community. The Roundtable caucuses allow EPA to hear input on the cleanup design from the many stakeholders, community members, and interested parties of the Duwamish Superfund site through caucus representatives.

**Not sure what caucus you are in?** See the bottom of this agenda for a description of each caucus. Please reach out to the third-party neutral Roundtable facilitator (Sophie Glass, [sglass@triangleassociates.com](mailto:sglass@triangleassociates.com)) if you need help connecting with a caucus that matches your interests and role. There is time on the agenda for non-Roundtable members to ask questions and provide input. All are welcome!

### How to Join the Meeting:

All are welcome! The meeting will be held via Zoom. We encourage you to enter the Zoom room at least 15 minutes prior to the start of the meeting so we can address any technical issues. Please test your connection in advance at <https://zoom.us/test>.

**For meeting access help, contact Cheryl Klotz at [cklotz@triangleassociates.com](mailto:cklotz@triangleassociates.com) or call 206-583-0655 x 123.**

### Participation in English:

- For **English audio and visuals** by computer or smart phone (recommended), use this link: <https://us06web.zoom.us/j/86140028989>
- For **English audio-only** by phone, call **253-215-8782**, Zoom Meeting ID: **861 4002 8989**

### Participation through live interpreted services:

- Sign into the Zoom meeting using this link: <https://us06web.zoom.us/j/86140028989>
- For **Spanish, Khmer, or Vietnamese (Español, ខ្មែរ, Tiếng Việt)** audio, select your language in the Zoom toolbar on the bottom right of your screen during the meeting.
- [Translated materials are provided on the Roundtable Website.](#)

Time	Agenda Topic	Materials
5:00-5:30 pm (30 min)	<b>Optional Technology Testing</b> <i>Sign on early to get comfortable with the virtual meeting platform (including interpretation features) and get technology assistance.</i>	
5:30-5:35 pm (10 min)	<b>Welcome, Introductions, and Where We Left Off—Facilitator</b> <i>Objective: Define the purpose of the meeting and know who is at the table.</i> <ul style="list-style-type: none"> <li>• Welcome and introductions of Roundtable members</li> <li>• Reminder of Roundtable Steering Committee role and current members</li> <li>• Recap of previous Roundtable meeting</li> <li>• Agenda review</li> </ul>	March 31, 2022 Roundtable Meeting Summary Links: <a href="#">English</a> <a href="#">ខ្មែរ</a> <a href="#">Español</a> <a href="#">Tiếng Việt</a>
5:35-6:05 pm (25 min)	<b>Presentation with Q&amp;A: Initial Cleanup Design for the Upper Reach—EPA</b> <i>Objective: Hear from EPA about the early design for the upper reach and what kinds of cleanup activities are planned for each cleanup area.</i>  <i>* See page 5 of the agenda for a map of the reaches (portions of the river for cleanup).</i>	Slides [link forthcoming]
6:05-6:10 pm (5 min)	<b>Break</b>	
6:10-6:45 pm (35 min)	<b>Breakout Room Discussions</b> <i>Objective: Use breakout rooms for Roundtable members to provide input on how cleanup in the different parts of the Upper Reach might affect them (and others in their caucus).</i> <ul style="list-style-type: none"> <li>• Breakout room setup (5 min)</li> <li>• Breakout room discussions (30 min)</li> </ul>	Map(s) and photos of the Upper Reach from 30% Design Document
6:45-7:15 pm (30 min)	<b>Large Group Dialogue and Q&amp;A</b> <i>Objective: Hear from each caucus about key feedback and questions they have about the information that EPA shared.</i>	

Time	Agenda Topic	Materials
	<ul style="list-style-type: none"> <li>Facilitated discussion and Q&amp;A – Caucus leads (or other individuals designated within each caucus) report out 1-3 items to the large group</li> </ul>	
7:15-7:20 pm (5 min)	<p><b>Announcements from Roundtable Caucuses—All Caucuses</b>  <i>Objective: Share updates from caucuses on information related to the cleanup and river communities.</i></p> <ul style="list-style-type: none"> <li>Brief updates from Roundtable Members (optional)</li> </ul>	
7:20-7:25 pm (5 min)	<p><b>Opportunity for Comments and Questions from Observers</b>  <i>Objective: Allow for brief comments and questions from participants who are not Roundtable members.</i></p>	
7:25-7:30 pm (5 min)	<p><b>Wrap Up and Next Steps</b>  <i>Objective: Ensure follow up on ideas and tasks.</i></p> <ul style="list-style-type: none"> <li>Satisfaction poll</li> <li>Action items</li> <li>Next steps</li> </ul>	
7:30 pm	<b>Adjourn</b>	
7:30-7:45 pm (15 min)	<p><b>Optional Debrief</b>  <i>Objective: How can the meeting experience be improved? (for example: language coordination, facilitation, meeting materials, presentations, etc.)</i></p>	

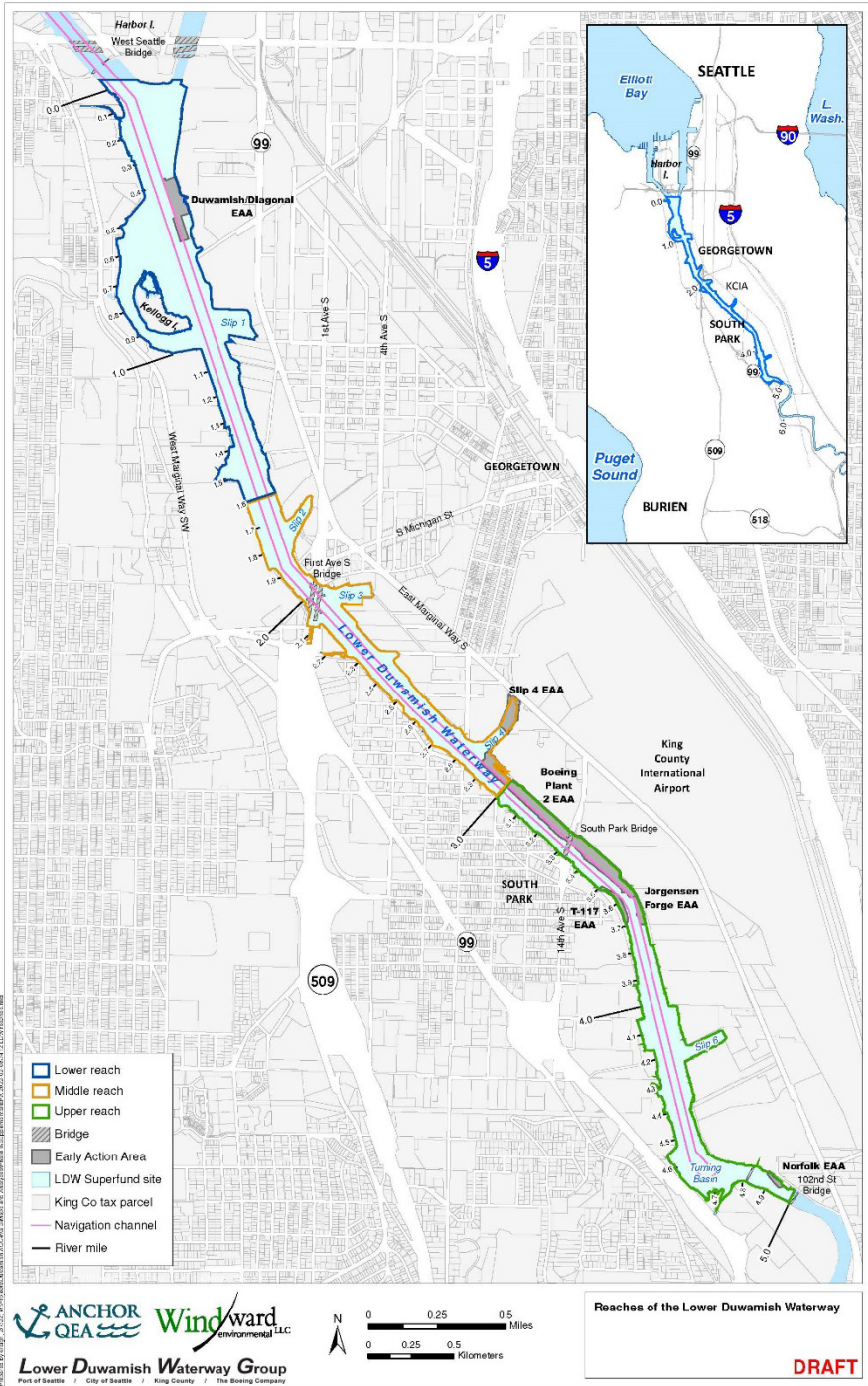
### Roundtable Caucuses

Below is a current list of the Roundtable caucuses with a description of each. Note: **PRP stands for “Potentially Responsible Party,”** meaning an entity that, under Superfund law, may be required to pay for the costs of cleanup. [Click here for more information about Superfund law](#) (in English).

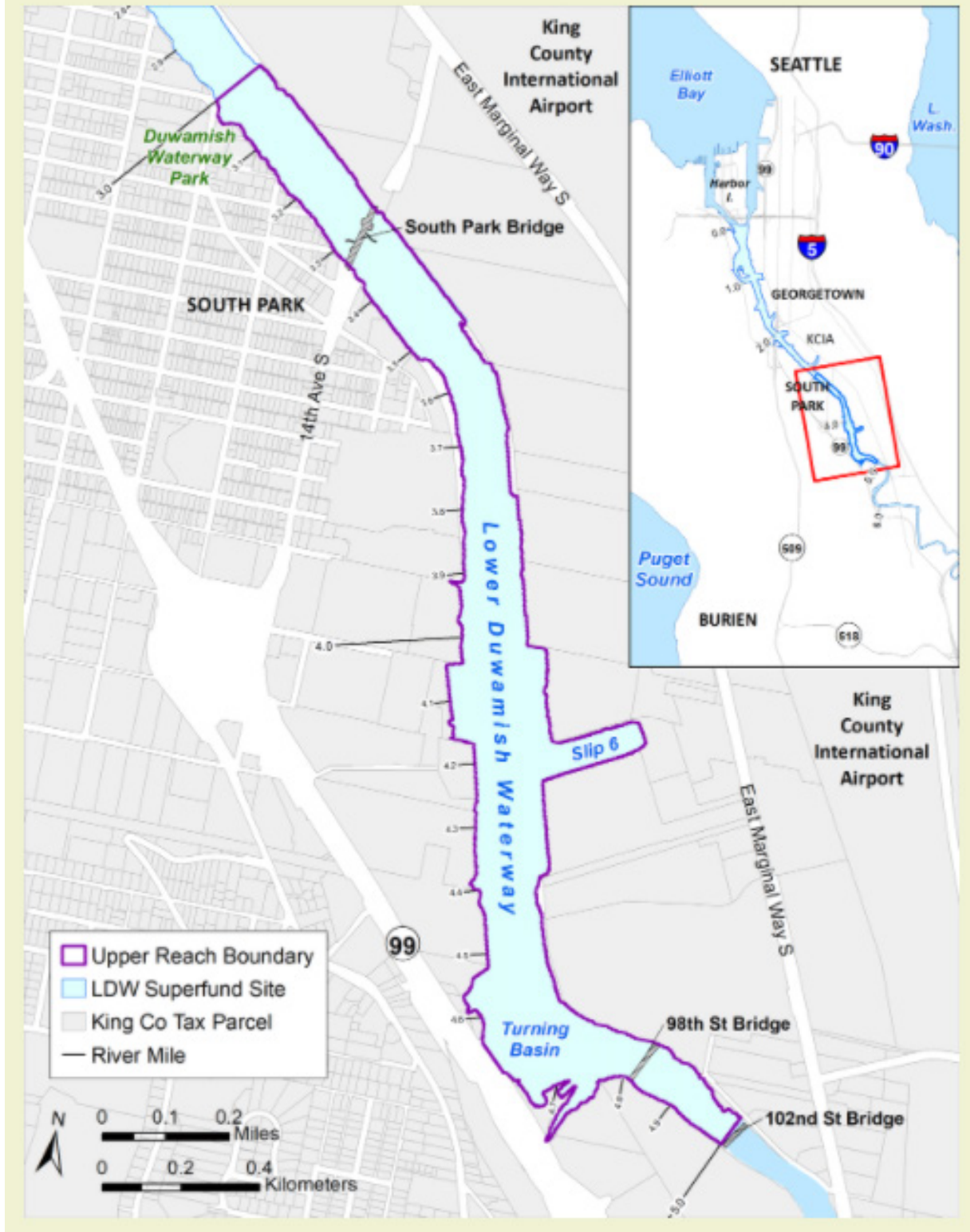
Caucus	Description
Muckleshoot Tribe	The Muckleshoot Tribe has a seat at the Roundtable as a federally recognized Tribe that could be affected by the cleanup. <i>Note: The Muckleshoot Tribe also meets directly with EPA in a government-to-government relationship.</i>
Suquamish Tribe	The Suquamish Tribe has a seat at the Roundtable as a federally recognized tribe that could be affected by the cleanup. <i>Note: The Suquamish Tribe also meets directly with EPA in a government-to-government relationship.</i>
Yakama Nation	The Yakama Nation has a seat at the Roundtable as a federally recognized tribe that could be affected by the cleanup. <i>Note: The Yakama Nation also meets directly with EPA in a government-to-government relationship.</i>

Caucus	Description
PRP Business Caucus	Businesses that EPA has identified as Potentially Responsible Parties (see above).
Non-PRP Business Caucus	Local businesses that EPA has <b>not</b> identified as Potentially Responsible Parties (see above).
PRP Local Government Caucus	Local governments and agencies that EPA has identified as Potentially Responsible Parties (see above).
Non-PRP Local Government Caucus	Local governments and agencies that EPA has <b>not</b> identified as Potentially Responsible Parties (see above).
Community Advisory Group: Duwamish River Community Coalition	The Duwamish River Community Coalition (DRCC) is a non-profit with multiple roles. Related to Superfund, DRCC serves as the <a href="#">Community Advisory Group</a> for this Superfund site. DRCC also has a <a href="#">Technical Assistance Grant</a> from EPA to interpret, communicate and explain reports and decisions about the site to local communities. They also facilitate community input on the cleanup process. The Coalition includes several non-profit organizations and the Duwamish Tribe.
Duwamish River Accountability Group	The Duwamish River Accountability Group (DRAG) is a group of community members and volunteers dedicated to holding those entrusted with the care of the Duwamish River and surrounding region accountable for a healthy environment for all those living and working near the Duwamish River.
Community Based Organizations	Community members that live, work and play in the Duwamish Valley and organizations that represent and serve them (beyond DRCC and DRAG).
Fishers Caucus	This caucus represents people who may fish in the river or eat fish caught there, including many who primarily speak languages other than English. Caucus leads are Community Health Advocates who help teach their communities about safer seafood choices in culturally appropriate ways.
Recreational River Users	People and groups who enjoy recreational activities on the river (other than fishing), such as boating.
Resource Members	Government agencies and educational institutions that have a role, expertise or information that may be relevant to the cleanup of the waterway.

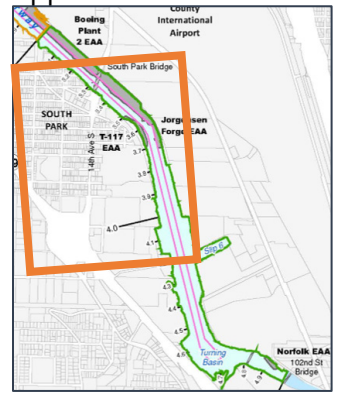
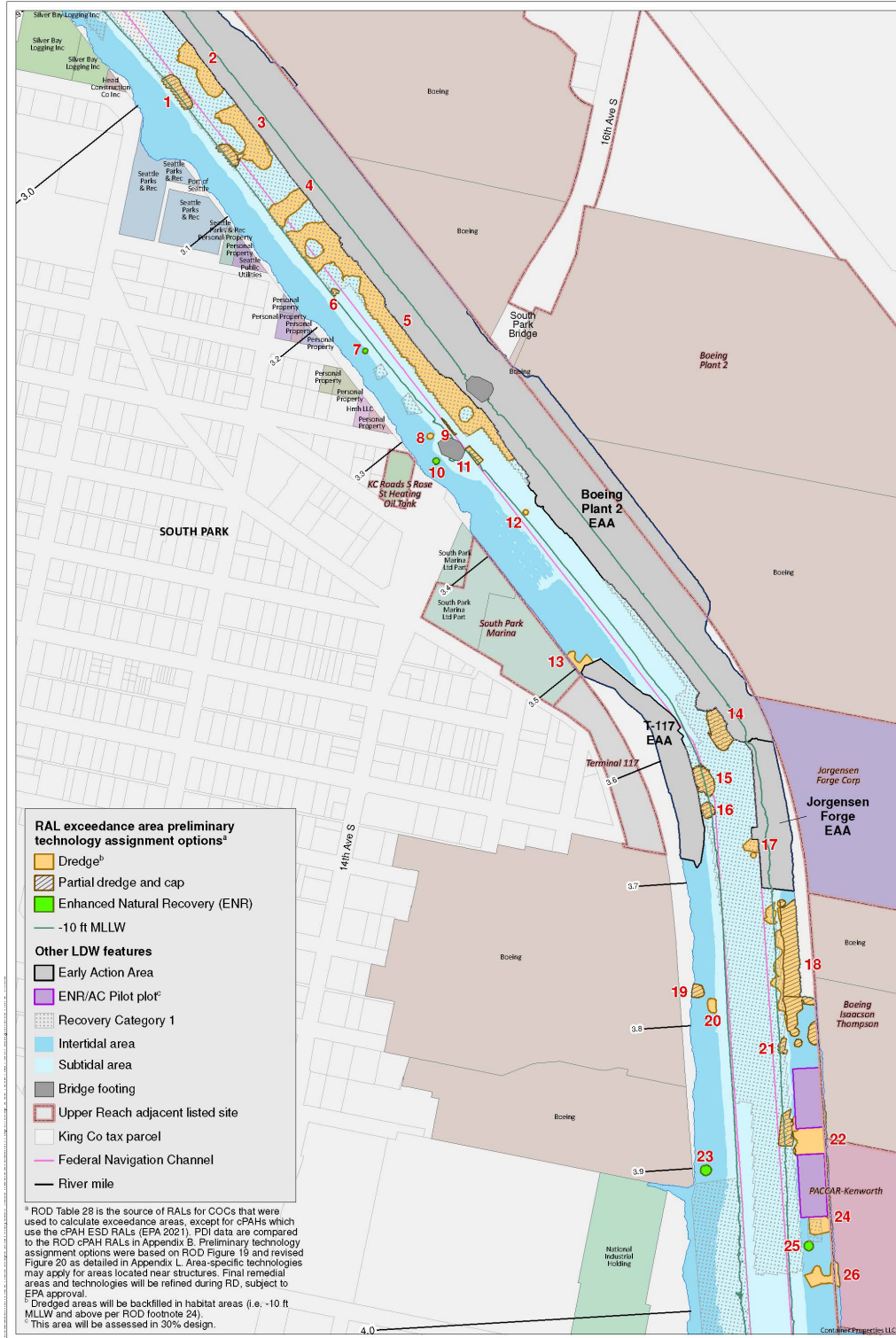
# Map of the Sections on the Lower Duwamish Waterway



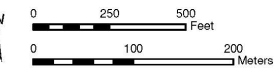
# Upper Reach of Lower Duwamish Waterway



The map below shows the cleanup locations in the Upper Reach identified in the Upper Reach Pre-Design Investigation Report (PDI).

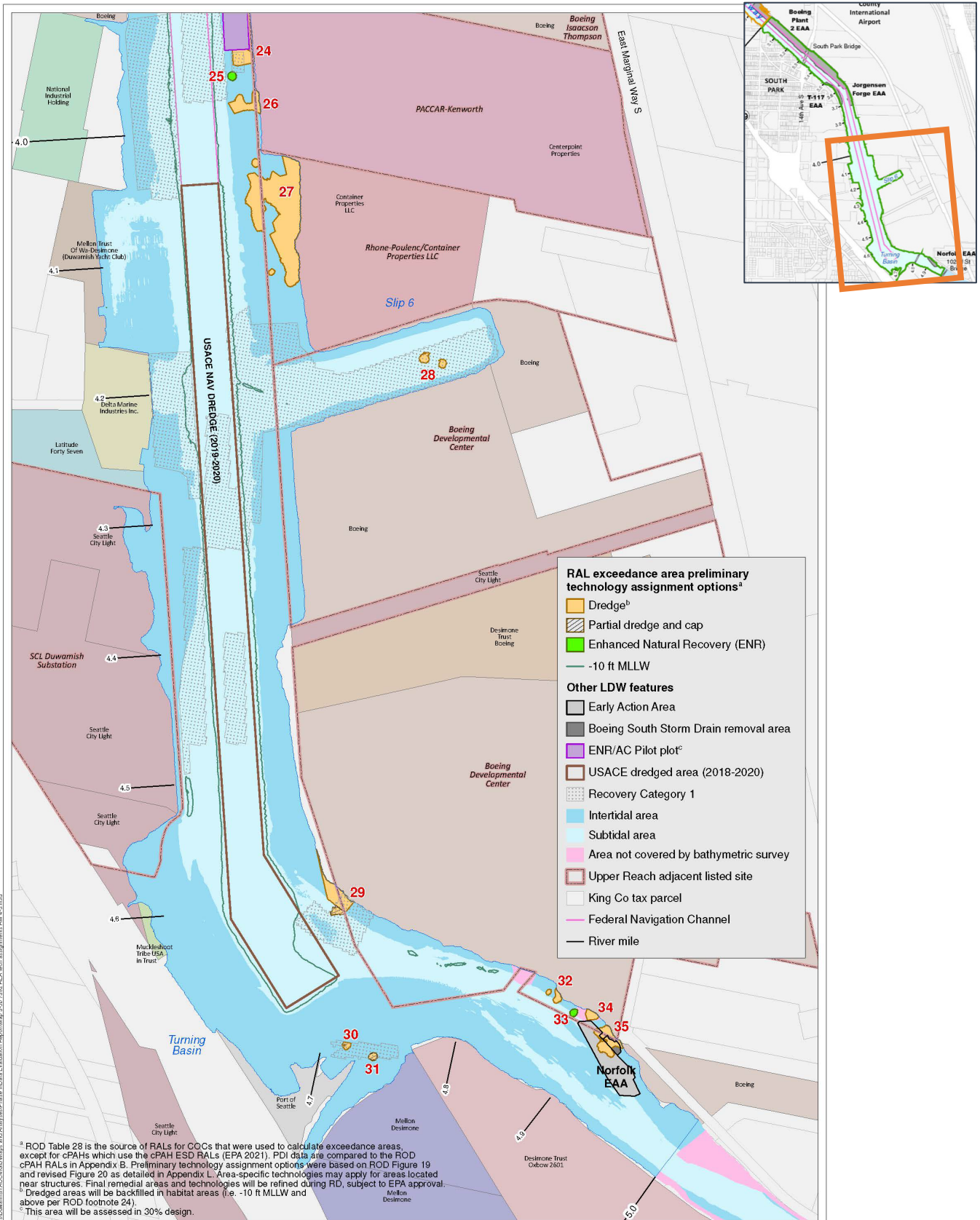


**Windward environmental LLC**  
**ANCHOR QEA**  
**Lower Duwamish Waterway Group**  
 Port of Seattle / City of Seattle / King County / The Boeing Company



**Map 3-5a. Preliminary technology assignment options by RAL exceedance area, RM 3.0 to RM 4.0**

PRE-DESIGN INVESTIGATION DATA EVALUATION REPORT FOR THE LDW UPPER REACH JULY 15, 2022



Prepared by: 7/15/22, W:\Projects\Duwamish\ACAS\Map3-5b\_Preliminary Technology Assignment Options by RAL Exceedance Area, RM 4.0 to RM 5.0.mxd

<sup>a</sup> ROD Table 28 is the source of RALs for CQCs that were used to calculate exceedance areas, except for cPAHs which use the cPAH ESD RALs (EPA 2021). PDI data are compared to the ROD cPAH RALs in Appendix B. Preliminary technology assignment options were based on ROD Figure 19 and revised Figure 20 as detailed in Appendix L. Area-specific technologies may apply for areas located near structures. Final remedial areas and technologies will be refined during RD, subject to EPA approval.

<sup>b</sup> Dredged areas will be backfilled in habitat areas (i.e. -10 ft MLLW and above per ROD footnote 24).

<sup>c</sup> This area will be assessed in 30% design.

