

1. Agenda
2. Updated Ground Rules
3. Discussion Questions
4. Upper Reach Maps



Lower Duwamish Waterway Roundtable  
កិច្ចប្រជុំតុមូលស្តីអំពីការសម្អាតចុងផ្លូវទឹកស្ទឹងខ្នងមមីសហ៍  
Mesa redonda del Cauce inferior del río Duwamish  
Bàn Tròn của Hạ Lưu Nguồn Duwamish

## Lower Duwamish Waterway Roundtable Virtual Meeting Agenda (v.2-23-22) Thursday, March 31, 2022 | 5:30-7:30 PM (Participants may check in beginning at 5:00 PM)

### Roundtable Purpose and Structure:

The Lower Duwamish Waterway (LDW) Roundtable is a forum for those affected by the cleanup of the [Lower Duwamish Waterway Superfund Site](#) and local agencies to work together on mitigating the impacts of the cleanup on the affected community. The Roundtable caucuses allow EPA to hear input on the cleanup design from the many stakeholders, community members, and interested parties of the Duwamish Superfund site through caucus representatives.

**Not sure what caucus you are in?** See the bottom of this agenda for a description of each caucus. Please reach out to the third-party Roundtable facilitator (Sophie Glass, [sglass@triangleassociates.com](mailto:sglass@triangleassociates.com)) if you need help connecting with a caucus that matches your interests and role. There is time on the agenda for non-Roundtable members to ask questions and provide input. All are welcome!

### Purpose of Today's Meeting:

For the Roundtable to learn about EPA's progress in further defining areas of the upper reach to be cleaned up and to identify and share initial questions, concerns, and ideas for EPA to consider.

### In this meeting we will:

- Hear technical updates from EPA on the status of the cleanup.
- Discuss the technical updates in caucus-based small groups (*suggested discussion questions will be provided*).
- Discuss questions and feedback from the caucuses about EPA's updates in a large group.
- Hear updates from Roundtable members and members of the public.

### How to Participate:

The meeting will be held via Zoom. We encourage you to enter the Zoom room at least 15 minutes prior to the start of the meeting (Zoom line is open at 5pm) so we can address any technical issues. Please test your connection in advance at <https://zoom.us/test>. For meeting access help, contact Dat Nguyen at [dnguyen@triangleassociates.com](mailto:dnguyen@triangleassociates.com) or call 206-962-3707.

### Participation in English:

- For English audio and visuals, use this link: <https://us06web.zoom.us/j/85167733700>
- To participate by phone (English only): Call **253-215-8782**, Zoom Meeting ID: **851 6773 3700**

### Participation through Interpreted Services:

- Sign into the Zoom meeting using this link: <https://us06web.zoom.us/j/85167733700>
- For **Spanish, Khmer, or Vietnamese (Español, ខ្មែរ, Tiếng Việt)** audio, select your language in the Zoom toolbar on the bottom right of your screen during the meeting.
- [Translated materials are provided on the Roundtable Website.](#)

Time	Agenda Topic	Materials
5:00-5:30 pm (30 min)	<p><b>Optional Technology Testing</b>  <i>Sign on early to get comfortable with the virtual meeting platform (including interpretation features) and get technology assistance.</i></p>	
5:30-5:40 pm (10 min)	<p><b>Welcome, Introductions, and Where We Left Off—Facilitator</b>  <i>Objective: Define the purpose of the meeting and know who is at the table.</i></p> <ul style="list-style-type: none"> <li>• Welcome and introductions of Roundtable members</li> <li>• Reminder of Roundtable Steering Committee role and current members</li> <li>• Recap of previous Roundtable meeting</li> <li>• Agenda review</li> <li>• Review updated ground rules for caucus discussions</li> </ul>	<p>Link to November 10, 2021 Roundtable Meeting Summary: <a href="https://www.duwmishwaterwayroundtable.org/s/ENGLISH-11102021-LDW-Roundtable-Mtg-Summary.pdf">https://www.duwmishwaterwayroundtable.org/s/ENGLISH-11102021-LDW-Roundtable-Mtg-Summary.pdf</a></p> <p>Updated ground rules</p>
5:40-6:05 pm (25 min)	<p><b>Designing the Cleanup of the Waterway—EPA</b>  <i>Objective: Hear from EPA about new documents related to the cleanup, how the new information may affect where and what kind of cleanup activities will take place, and what Roundtable members can expect to happen next.</i></p> <ul style="list-style-type: none"> <li>• Upper Reach of the Waterway*: Updated cleanup boundaries based on two years of sampling in the river and preparing for the first major design document for the Upper Reach.</li> <li>• Middle Reach of the Waterway*: Description, how it differs from the Upper Reach, and schedule for design.</li> <li>• Jorgensen Forge Early Action Area: Brief update on status</li> <li>• Questions and answers about presentation</li> </ul> <p><i>* See last page of the agenda for a map of the reaches (portions of the river for cleanup).</i></p>	<p>Slides link: <a href="https://ldwroundtable.squarespace.com/s/LDW-Roundtable-March-31-2022-Full-Slide-Deck.pdf">https://ldwroundtable.squarespace.com/s/LDW-Roundtable-March-31-2022-Full-Slide-Deck.pdf</a></p>
6:05-6:10 pm (5 min)	<p><b>Break</b></p>	
6:10-6:45 pm (35 min)	<p><b>Caucus Discussions</b>  <i>Objective: Use breakout rooms for caucuses to discuss the information amongst themselves and prepare questions and feedback for EPA.</i></p> <ul style="list-style-type: none"> <li>• Breakout room setup (5 min)</li> </ul>	<p>Map of the Upper Reach from Data Evaluation Report</p>

Time	Agenda Topic	Materials
	<ul style="list-style-type: none"> <li>Caucus discussions (25 min) – <i>Caucus lead (or other designated individual) facilitates dialogue; another caucus member takes notes to send to facilitation team/EPA</i></li> </ul>	
6:45-7:15 pm (30 min)	<p><b>Large Group Dialogue and Q&amp;A</b> <i>Objective: Hear from each caucus about key feedback and questions they have about the information that EPA shared.</i></p> <ul style="list-style-type: none"> <li>Facilitated discussion and Q&amp;A – Caucus leads (or other individuals designated within each caucus) report out 1-3 items to the large group</li> </ul>	
7:10-7:15 pm (5 min)	<p><b>Announcements from Roundtable Caucuses—All Caucuses</b> <i>Objective: Share updates from caucuses and caucus members on information related to the cleanup and river communities.</i></p> <ul style="list-style-type: none"> <li>Brief updates from Roundtable Members</li> </ul>	
7:15-7:25 pm (10 min)	<p><b>Opportunity for Comments and Questions from Observers</b> <i>Objective: Allow for comments and questions from participants who are not Roundtable members.</i></p>	
7:25-7:30 pm (5 min)	<p><b>Wrap Up and Next Steps</b> <i>Objective: Ensure follow up on ideas and tasks.</i></p> <ul style="list-style-type: none"> <li>Satisfaction poll</li> <li>Action items</li> <li>Next steps</li> </ul>	
7:30 pm	<b>Adjourn</b>	
7:30-7:45 pm (15 min)	<p><b>Optional Debrief</b> Optional Debrief: How can the meeting experience be improved? (language coordination, facilitation, meeting materials, presentations, etc.)</p>	

### Roundtable Caucuses

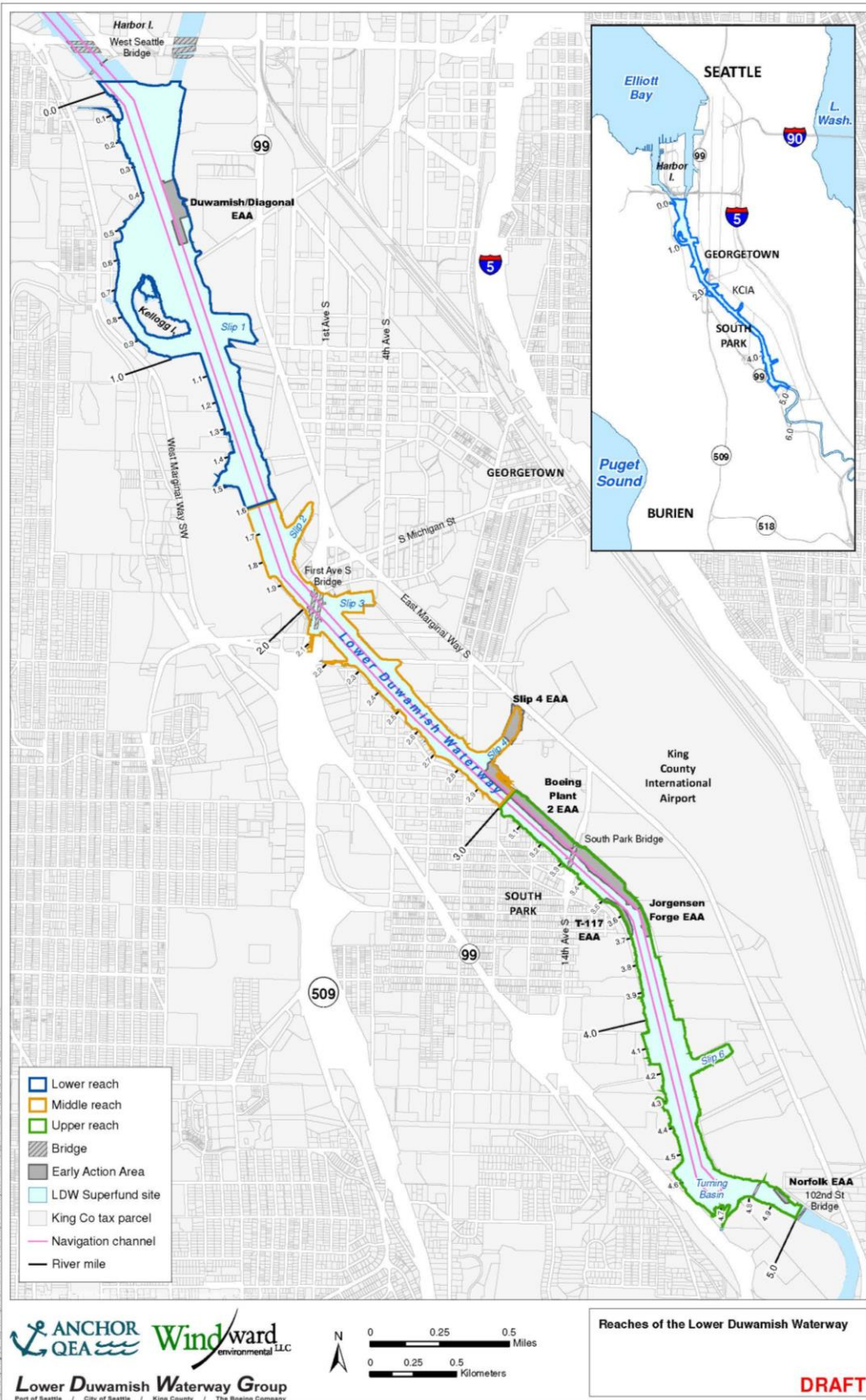
Below is a current list of the Roundtable caucuses with a description of each. Note: **PRP stands for “Potentially Responsible Party,”** meaning an entity that, under Superfund law, may be required to pay for the costs of cleanup. [Click here for more information about Superfund law](#) (in English).

Caucus	Description
Muckleshoot Tribe	The Muckleshoot Tribe has a seat at the Roundtable as a federally recognized Tribe that could be affected by the cleanup. <i>Note: The Muckleshoot Tribe also meets directly with EPA in a government-to-government relationship.</i>

Caucus	Description
Suquamish Tribe	The Suquamish Tribe has a seat at the Roundtable as a federally recognized tribe that could be affected by the cleanup. <i>Note: The Suquamish Tribe also meets directly with EPA in a government-to-government relationship.</i>
Yakama Nation	The Yakama Nation has a seat at the Roundtable as a federally recognized tribe that could be affected by the cleanup. <i>Note: The Yakama Nation also meets directly with EPA in a government-to-government relationship.</i>
PRP Business Caucus	Businesses that EPA has identified as Potentially Responsible Parties (see above).
Non-PRP Business Caucus	Local businesses that EPA has <b>not</b> identified as Potentially Responsible Parties (see above).
PRP Local Government Caucus	Local governments and agencies that EPA has identified as Potentially Responsible Parties (see above).
Non-PRP Local Government Caucus	Local governments and agencies that EPA has <b>not</b> identified as Potentially Responsible Parties (see above).
Community Advisory Group: Duwamish River Community Coalition	The Duwamish River Community Coalition (DRCC) is a non-profit with multiple roles. Related to Superfund, DRCC serves as the <a href="#">Community Advisory Group</a> for this Superfund site. DRCC also has a <a href="#">Technical Assistance Grant</a> from EPA to interpret, communicate and explain reports and decisions about the site to local communities. They also facilitate community input on the cleanup process. The Coalition includes several non-profit organizations and the Duwamish Tribe.
Duwamish River Accountability Group	The Duwamish River Accountability Group (DRAG) is a group of community members and volunteers dedicated to holding those entrusted with the care of the Duwamish River and surrounding region accountable for a healthy environment for all those living and working near the Duwamish River.
Community Based Organizations	Community members that live, work and play in the Duwamish Valley and organizations that represent and serve them (beyond DRCC and DRAG).
Fishers Caucus	This caucus represents people who may fish in the river or eat fish caught there, including many who primarily speak languages other than English. Caucus leads are Community Health Advocates who help teach their communities about safer seafood choices in culturally appropriate ways.
Recreational River Users	People and groups who enjoy recreational activities on the river (other than fishing), such as boating.
Resource Members	Government agencies and educational institutions that have a role, expertise or information that may be relevant to the cleanup of the waterway.

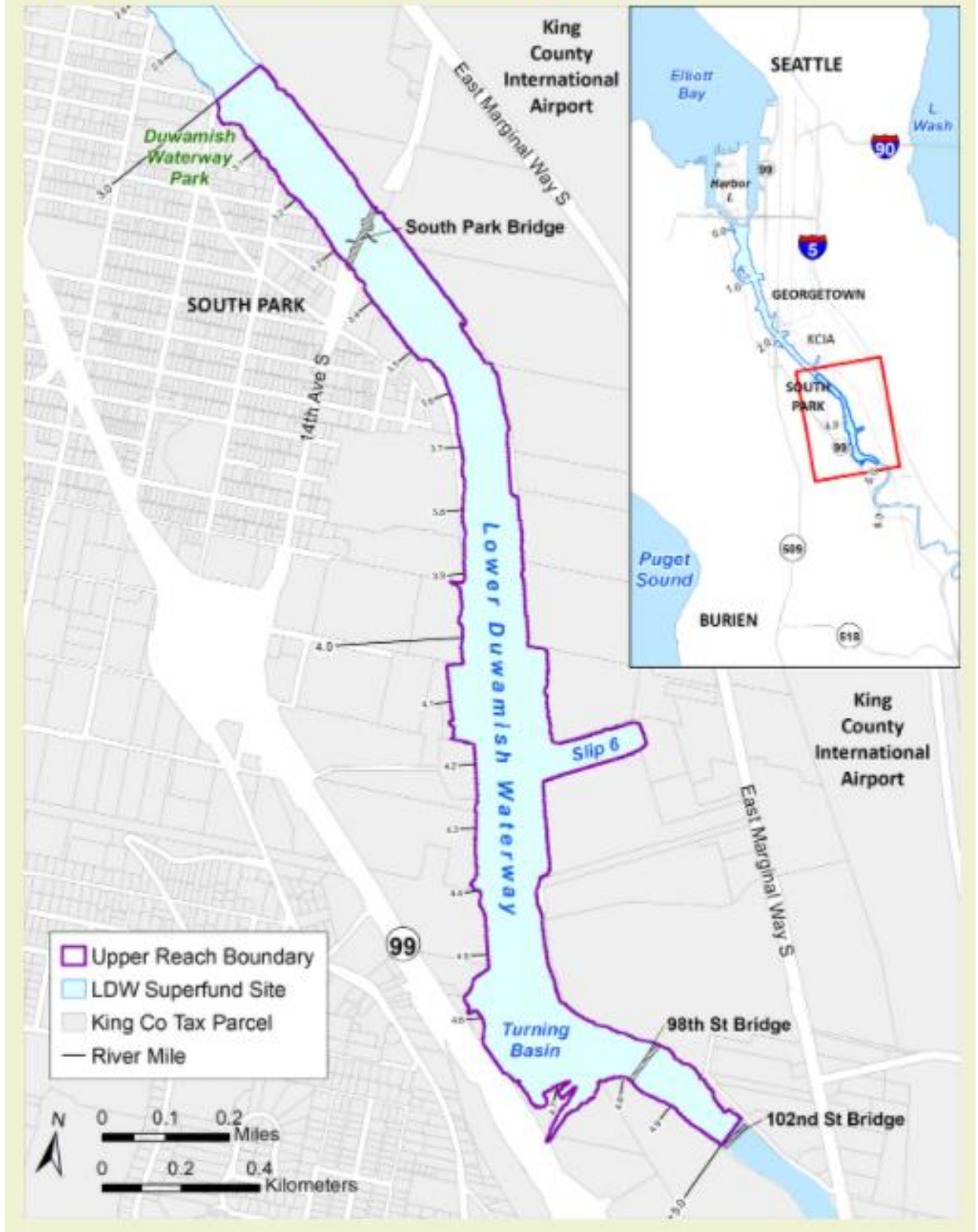
## Map of the Sections on the Lower Duwamish Waterway

EPA will clean the Lower Duwamish Waterway in three parts. Cleanup will begin in the Upper Reach first (outlined in green below), then the Middle Reach (yellow), and then the Lower Reach (blue).





# Upper Reach of Lower Duwamish Waterway



## LDW Roundtable Ground Rules (from Roundtable Operating Procedures Document)

Below are ground rules for effective communication to be used during each Roundtable meeting. These will be posted at Roundtable meetings.

### Be Respectful

- One person speaks at a time.
- Listen when others are speaking, avoid interrupting and side conversations.
- Allow time for interpreters when present.
- Hear and respect minority opinions.
- Good allies speak up. Members are encouraged not to ignore inappropriate behavior

### Be Constructive

- Acknowledge that all participants bring with them legitimate purposes, goals, concerns and interests, whether or not you are in agreement with them.
- Act in “good faith,” seeking to resolve conflicts and identify solutions.
- It is OK to disagree; it is not OK to make personal attacks or slanderous statements.
- Minimize the use of jargon and acronyms, define and explain when used.
- If you have a problem with a particular person, take the matter up with that person directly. If unable to resolve the difference, seek assistance from the facilitator.

### Be Productive

- Begin and end meetings on time.
- Respect time constraints.
- Adhere to the agenda as much as possible, focusing on the subject at hand.

### DRAFT Ground rules for Caucus Breakouts

- The intent is for caucuses to have a chance to discuss shared issues, concerns, and questions.
  - Note: can't guarantee confidentiality
- Caucus guests are asked to respect the intent of each caucus to focus on common interests.
- Focus on EPA Superfund cleanup, not caucus members.
- If you are in a caucus meeting of a caucus that is not yours, please identify yourself and stay in listening mode.
- Choose a notetaker.
- Choose a facilitator (could be the Caucus Lead), or ask Triangle to serve as a facilitator.



### March 2022 Roundtable Meeting: Draft Caucus Discussion Questions

Below is a list of potential discussion questions to offer each caucus during their breakout rooms. These will be shared with the Roundtable Steering Committee for their feedback.

#### Questions for All Caucuses:

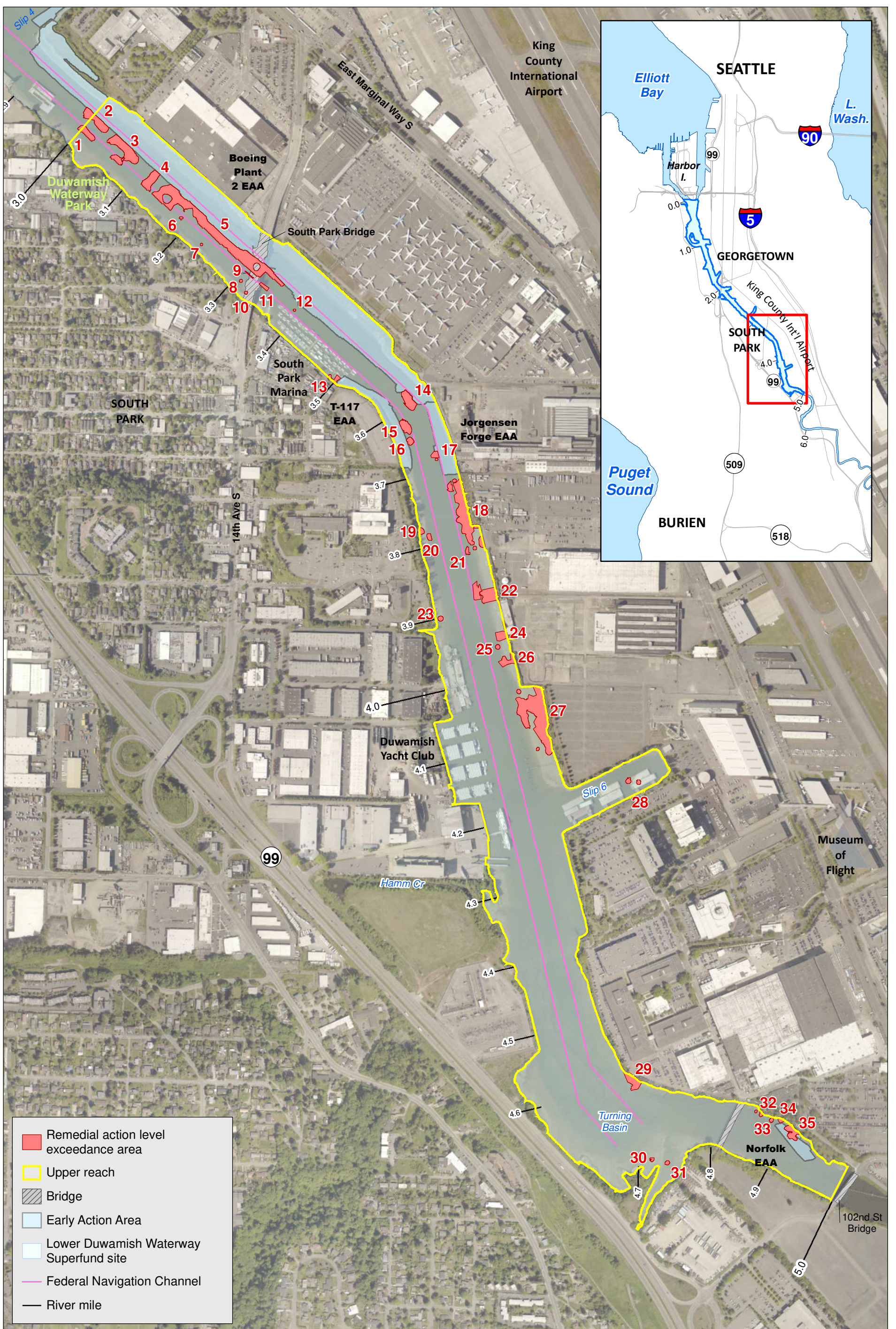
- Beyond removing contaminated materials, do you see opportunities where cleanup actions could directly enhance the LDW? (e.g. public access points, habitat restoration etc.)
- Do you have any concerns about areas shown on this map being slated for active cleanup?

#### Additional Questions for Specific Caucuses:

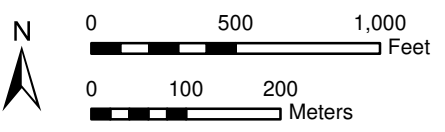
Caucus	Description
PRP Business Caucus	<ul style="list-style-type: none"> <li>• For the areas where active clean-up might take place, how do you see these areas changing in ways that might impact cleanup?</li> <li>• What should EPA keep in mind in terms of use of the navigation channel?</li> </ul>
Non-PRP Business Caucus	<ul style="list-style-type: none"> <li>• For the areas where active clean-up might take place, how do you see these areas changing in ways that might impact cleanup?</li> </ul>
PRP Local Government Caucus <i>Port, WTD, SPU</i>	<ul style="list-style-type: none"> <li>• Given your understanding of the areas where active clean-up might take place, is there anything that EPA should inform Roundtable members about during future meetings?</li> <li>• What should EPA keep in mind in terms of use of the navigation channel?</li> </ul>
Non-PRP Local Government Caucus <i>PHSKC, DVP</i>	<ul style="list-style-type: none"> <li>• For the areas where active clean-up might take place, how do you see these areas changing in ways that might impact cleanup?</li> <li>• How can EPA help keep you informed about cleanup activities so that you can inform your constituents?</li> </ul>
Community Based Organizations	<ul style="list-style-type: none"> <li>• What questions do you have about what cleanup activities might look like and the impacts cleanup activities may have?</li> <li>• What places near the cleanup areas does the community use most that EPA should avoid disturbing as much as possible? (beach access, footpaths, fishing areas)</li> <li>• How can EPA best reach your communities to let them know about potential impacts of specific cleanup activities?</li> </ul>
Community Advisory Group: Duwamish River Community Coalition	<ul style="list-style-type: none"> <li>• What questions do you have about what cleanup activities might look like and the impacts cleanup activities may have?</li> <li>• What places near the cleanup areas does the community use most that EPA should avoid disturbing as much as possible? (beach access, footpaths, fishing areas)</li> <li>• How can EPA best reach your communities to let them know about potential impacts of specific cleanup activities?</li> </ul>
Duwamish River Accountability Group	<ul style="list-style-type: none"> <li>• What questions do you have about what cleanup activities might look like and the impacts cleanup activities may have?</li> </ul>

	<ul style="list-style-type: none"> <li>• What places near the cleanup areas does the community use most that EPA should avoid disturbing as much as possible? (beach access, footpaths, fishing areas)</li> <li>• How can EPA best reach your communities to let them know about potential impacts of specific cleanup activities?</li> </ul>
Fishers Caucus	<ul style="list-style-type: none"> <li>• Are there any fishing piers that might be impacted by cleanup activities in the identified areas?</li> </ul>
Recreational River Users	<ul style="list-style-type: none"> <li>• What places near the cleanup areas does the community use most that EPA should avoid disturbing as much as possible? (beach access, footpaths, fishing areas)</li> <li>• How can EPA best reach recreational river users to let them know about safety concerns during cleanup construction?</li> </ul>
Resource Members	<ul style="list-style-type: none"> <li>• From your perspective, what should EPA consider when planning for cleanup activities in these potential locations?</li> </ul>
Suquamish Tribe	<ul style="list-style-type: none"> <li>• Given your understanding of the areas where active clean-up might take place, is there anything that EPA should understand about the Suquamish Tribe’s fishing and cultural traditions?</li> <li>• Note: participating in this dialogue is not a substitution for government-to-government Tribal consultation.</li> </ul>
Yakama Nation	<ul style="list-style-type: none"> <li>• Given your understanding of the areas where active clean-up might take place, is there anything that EPA should understand about the Yakama Nation’s fishing and cultural traditions?</li> <li>• Note: participating in this dialogue is not a substitution for government-to-government Tribal consultation.</li> </ul>
Muckleshoot Tribe	<ul style="list-style-type: none"> <li>• Given your understanding of the areas where active clean-up might take place, is there anything that EPA should understand about the Muckleshoot Tribe’s fishing and cultural traditions?</li> <li>• Note: participating in this dialogue is not a substitution for government-to-government Tribal consultation.</li> </ul>

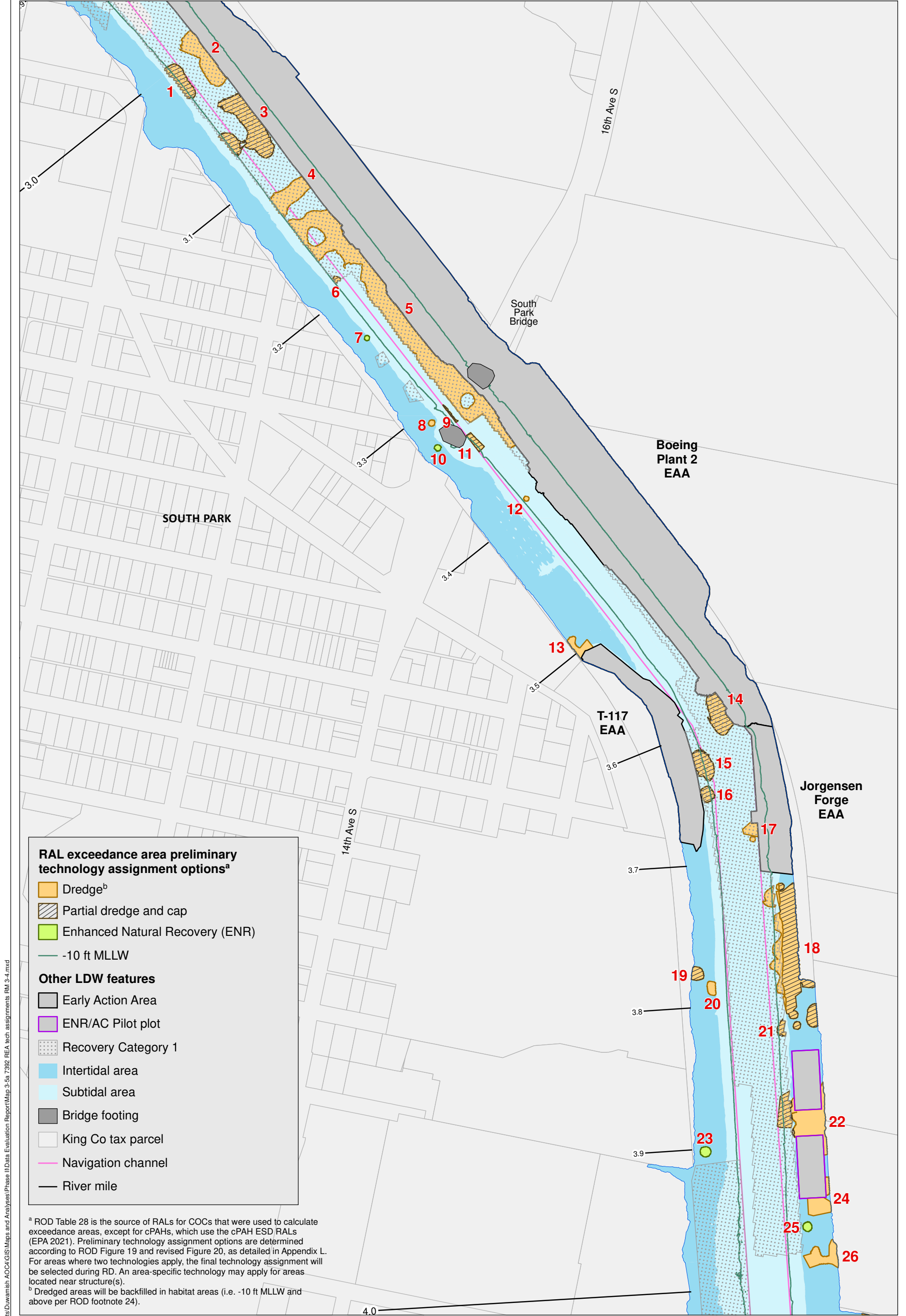




Prepared by: craigh, 3/15/22; W:\Projects\Duwamish AOC\GIS\Maps and Analyses\Phase II\Supplemental\EPA 2022-03-15\7259 RAL exceedance areas - aerial.mxd



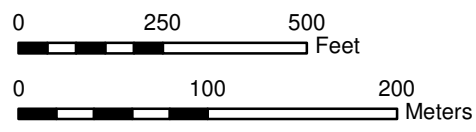




Prepared by craigh. 2/18/22. W:\Projects\Duwamish AOC\GIS\Maps and Analyses\Phase II\Data Evaluation\Report\Map 3-5a 7392 REA Tech assignments RM 3-4.mxd



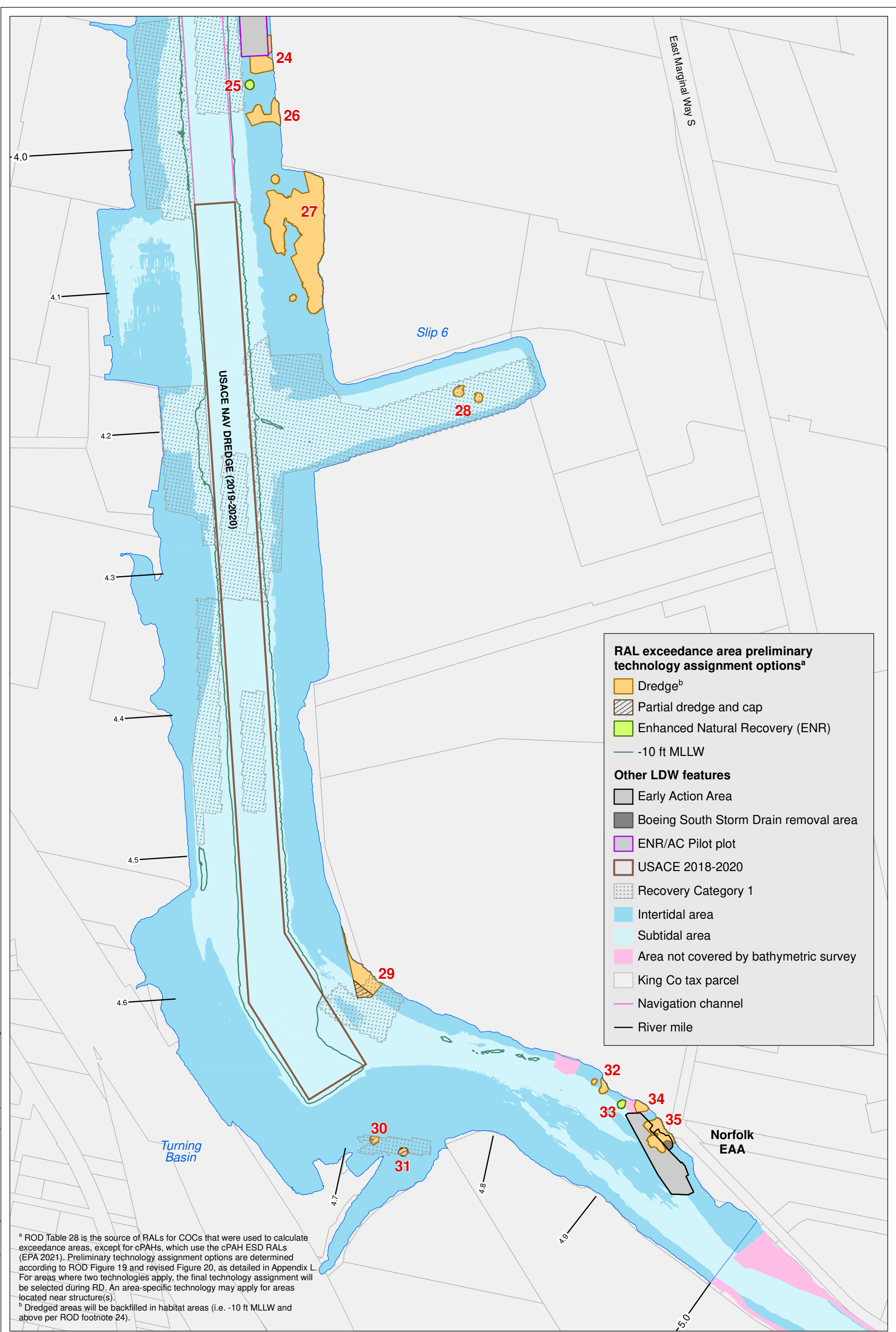
**Lower Duwamish Waterway Group**  
 Port of Seattle / City of Seattle / King County / The Boeing Company



**Map 3-5a. Preliminary technology assignment options by RAL exceedance area, RM 3.0 to RM 4.0**

PRE-DESIGN INVESTIGATION DATA EVALUATION REPORT FOR THE LDW UPPER REACH **DRAFT**

Prepared by craigh. 2/17/22. W:\Projects\Duwamish AOC\GIS\Maps and Analyses\Phase II\Data Evaluation\Report\Map 3-5b-7892-REA tech assignments RM 4-5.mxd



**RAL exceedance area preliminary technology assignment options<sup>a</sup>**

- Dredge<sup>b</sup>
- Partial dredge and cap
- Enhanced Natural Recovery (ENR)
- 10 ft MLLW

**Other LDW features**

- Early Action Area
- Boeing South Storm Drain removal area
- ENR/AC Pilot plot
- USACE 2018-2020
- Recovery Category 1
- Intertidal area
- Subtidal area
- Area not covered by bathymetric survey
- King Co tax parcel
- Navigation channel
- River mile

<sup>a</sup> ROD Table 28 is the source of RALs for COCs that were used to calculate exceedance areas, except for cPAHs, which use the cPAH ESD RALs (EPA 2021). Preliminary technology assignment options are determined according to ROD Figure 19 and revised Figure 20, as detailed in Appendix L. For areas where two technologies apply, the final technology assignment will be selected during RD. An area-specific technology may apply for areas located near structure(s).

<sup>b</sup> Dredged areas will be backfilled in habitat areas (i.e. -10 ft MLLW and above per ROD footnote 24).

