

Welcome to the
**Lower Duwamish Waterway
Roundtable Meeting**
THURSDAY, MARCH 31, 2022



Do you have your meeting materials?

Meeting materials (English, Vietnamese, Spanish, and Khmer) can be found on the Lower Duwamish Waterway Roundtable Website: <https://www.duwamishwaterwayroundtable.org/meetings> or scan the QR code on the right



For **Spanish, Khmer, or Vietnamese (Español, ខ្មែរ, Tiếng Việt)** audio, select your language in the Zoom toolbar on the bottom right of your screen during the meeting.

For **English** audio, please **select English**.



Facilitator's Notes



Keep yourself on mute unless you are speaking.



Balance speaking time and stay on the agenda topic.



Introduce yourself when speaking: "This is (name) with (affiliation, caucus/seat)"



In disagreements, share the reason why you feel as you do, and ask questions to find out how others feel.



Be respectful and courteous.



Be patient with potential internet connectivity issues - we will do our best to create a seamless experience!



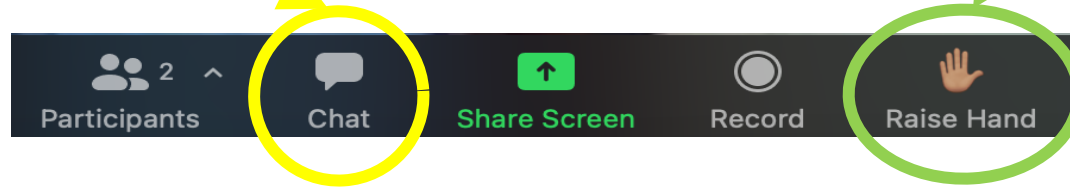
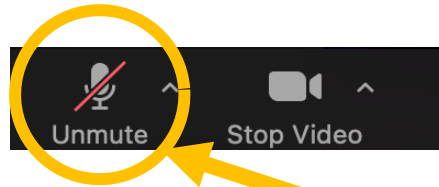
For **Spanish, Khmer, or Vietnamese (Español, ខ្មែរ, Tiếng Việt)** audio, select your language in the Zoom toolbar on the bottom right of your screen during the meeting.

For **English** audio, please **select English**.

Tips for Using Zoom

If you have a **technical problem** or want to **type a question**, please type them in the chat! Or, ask your interpreter to type for you.

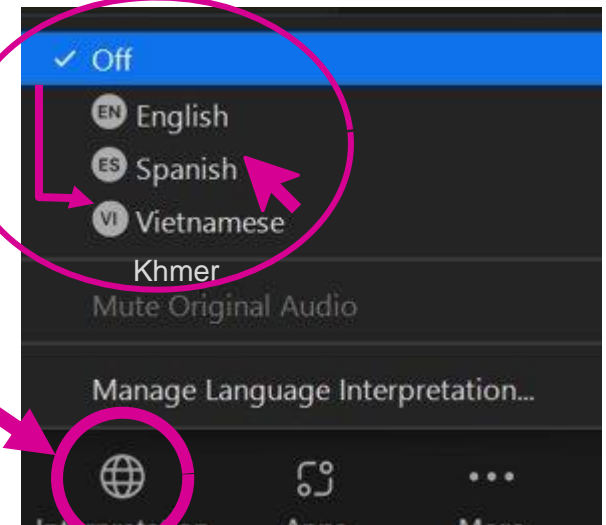
If you want to **comment** or ask a **question verbally**, please click 'Raise Hand' and we will call on you.



Please **keep yourself on mute** unless you are speaking. By phone only? Use your mute button or “*6”

For **Spanish, Khmer, or Vietnamese (Español, ខ្មែរ, Tiếng Việt)** audio, select your language in the Zoom toolbar on the bottom right of your screen during the meeting.

For **English** audio, please **select English**.



Multilingual Meeting Best Practices

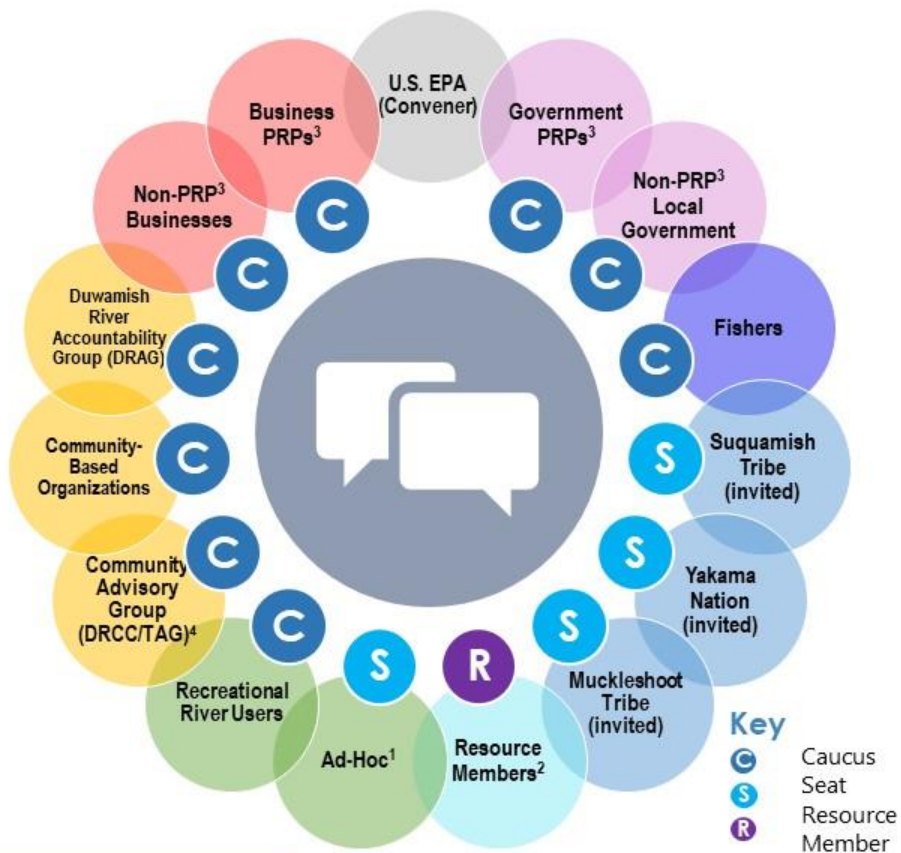
English participants should...

- Speak slowly!
- Take pauses every 2-3 sentences
- Avoid acronyms
- Use common language



Purpose

To provide a forum for interested and affected parties to make recommendations for the United States Environmental Protection Agency (U.S. EPA) to consider throughout the Lower Duwamish Waterway Superfund cleanup.



¹ Non-governmental community members or interest groups not represented in the Community Caucus.

² Government entities that contribute information but do not develop recommendations, including but not limited to the Washington State Department of Ecology and others.

³ PRP = Potentially Responsible Party

⁴ Duwamish River Cleanup Coalition/Technical Advisory Group

Purpose of the Roundtable

The Lower Duwamish Waterway (LDW) Roundtable is a forum for those affected by the cleanup of the *Lower Duwamish Waterway Superfund Site* to make recommendations to the U.S. Environmental Protection Agency (EPA) during the **design and construction** of the cleanup.

Today's Meeting Purpose



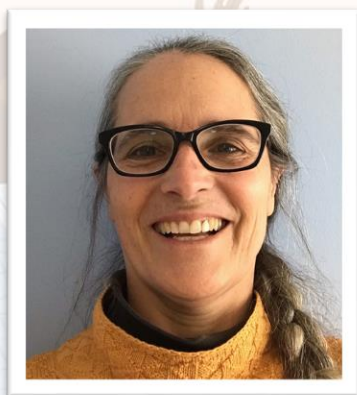
For the Roundtable to learn about EPA's progress in further defining areas of the upper reach to be cleaned up and to identify and share initial questions, concerns, and ideas for EPA to consider.

Today's Agenda



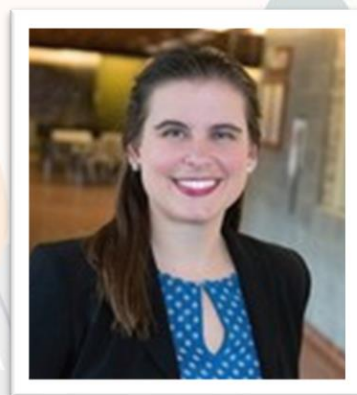
- Welcome, Introductions, and Where We Left Off
- Designing the Cleanup of the Waterway
- Caucus Discussions
- Large Group Dialogue and Q&A
- Announcements from Roundtable Caucuses
- Observer Comments and Questions
- Wrap Up and Next Steps
- Optional Debrief and Informational Networking

Welcome and Roundtable Introductions



Elly Hale

*Remedial Project
Manager*
U.S Environmental Protection
Agency (EPA)



Laura Knudsen

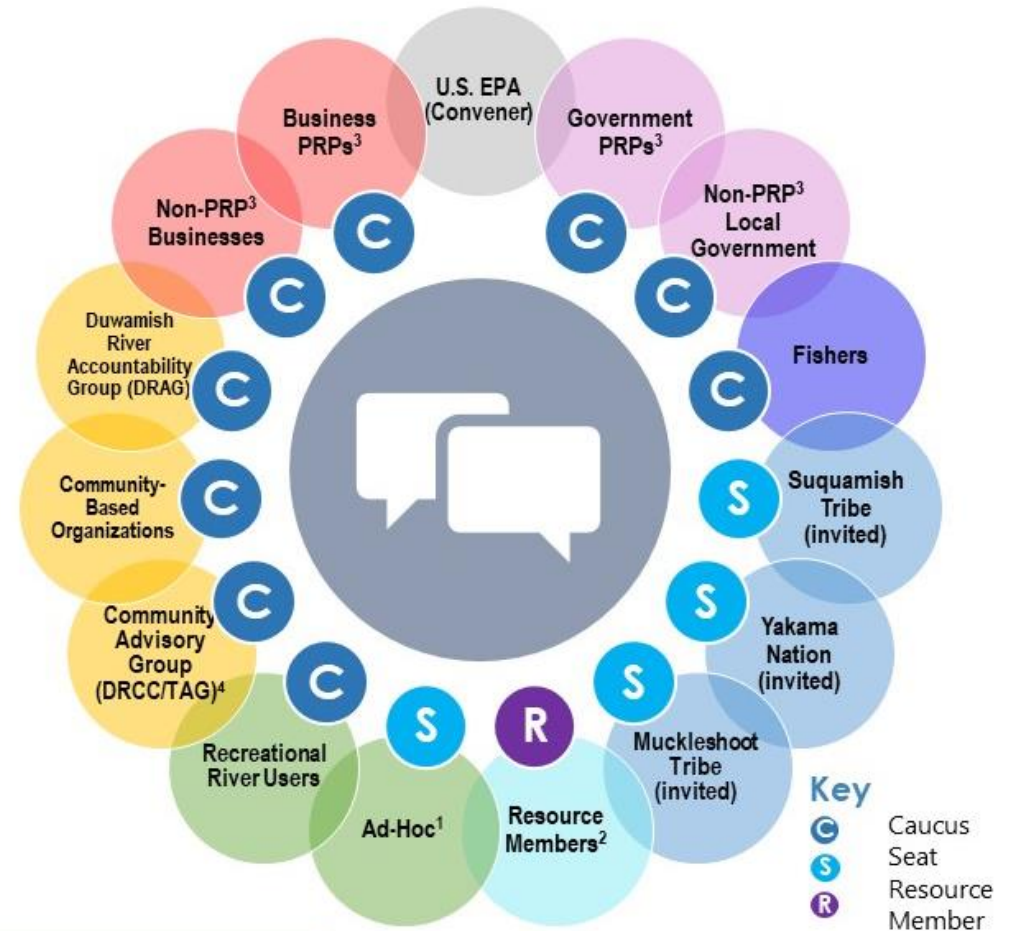
*Community Involvement
Coordinator*
U.S Environmental Protection Agency
(EPA)

Welcome and Roundtable Introductions

The facilitator will review the Roundtable caucuses and caucus leads.

Purpose

To provide a forum for interested and affected parties to make recommendations for the United States Environmental Protection Agency (U.S. EPA) to consider throughout the Lower Duwamish Waterway Superfund cleanup.



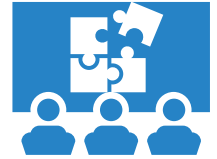
¹ Non-governmental community members or interest groups not represented in the Community Caucus.

² Government entities that contribute information but do not develop recommendations, including but not limited to the Washington State Department of Ecology and others.

³ PRP = Potentially Responsible Party

⁴ Duwamish River Cleanup Coalition/Technical Advisory Group

Roundtable Steering Committee



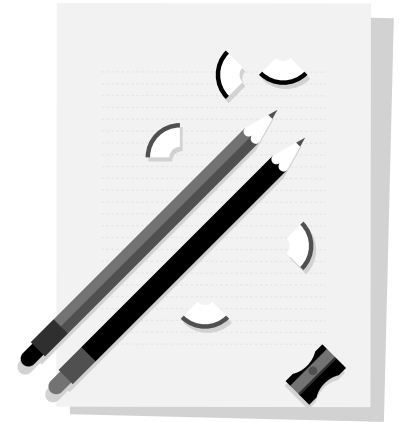
Coordinates with EPA to guide the work of the Roundtable, including soliciting agenda topics, drafting meeting agendas, and developing Roundtable work plans.

Includes members from three interest groups:

- Residents (Primary: James Rasmussen, DRCC; Alternate: Edwin Hernandez Reto, community member)
- Business/Industry/Labor (Primary: Pat Jablonski, Nucor; Alternate: Jonathan Hall, La Farge)
- Fishers (Rotating: Sophorn Sim, Emma Maceda, Kevin Duong)

Draft Ground Rules for Caucus Breakouts

- The intent is for caucuses to have a chance to discuss shared issues, concerns, and questions about the Superfund cleanup. While there is no guarantee of confidentiality during Roundtable meetings, caucus breakouts should be a safe space for dialogue.
- It is best to stay in your own caucus unless invited to visit another. If you visit a caucus that is not your own, identify yourself, respect the intent of each caucus to focus on its particular interests, stay in listening mode, and leave if requested.
- Choose a notetaker.
- Choose a facilitator (could be the Caucus Lead), or ask Triangle to serve as a facilitator. If possible, coordinate this before the meeting.





REMEDIAL DESIGN UPDATES

LDW Roundtable Meeting
March 31, 2022

Update on Upper Reach

Update on Middle Reach

Update on Earle M. Jorgensen Early Action Area

Remember the three LDW reaches?

Elliott Bay
(salt water,
downstream)

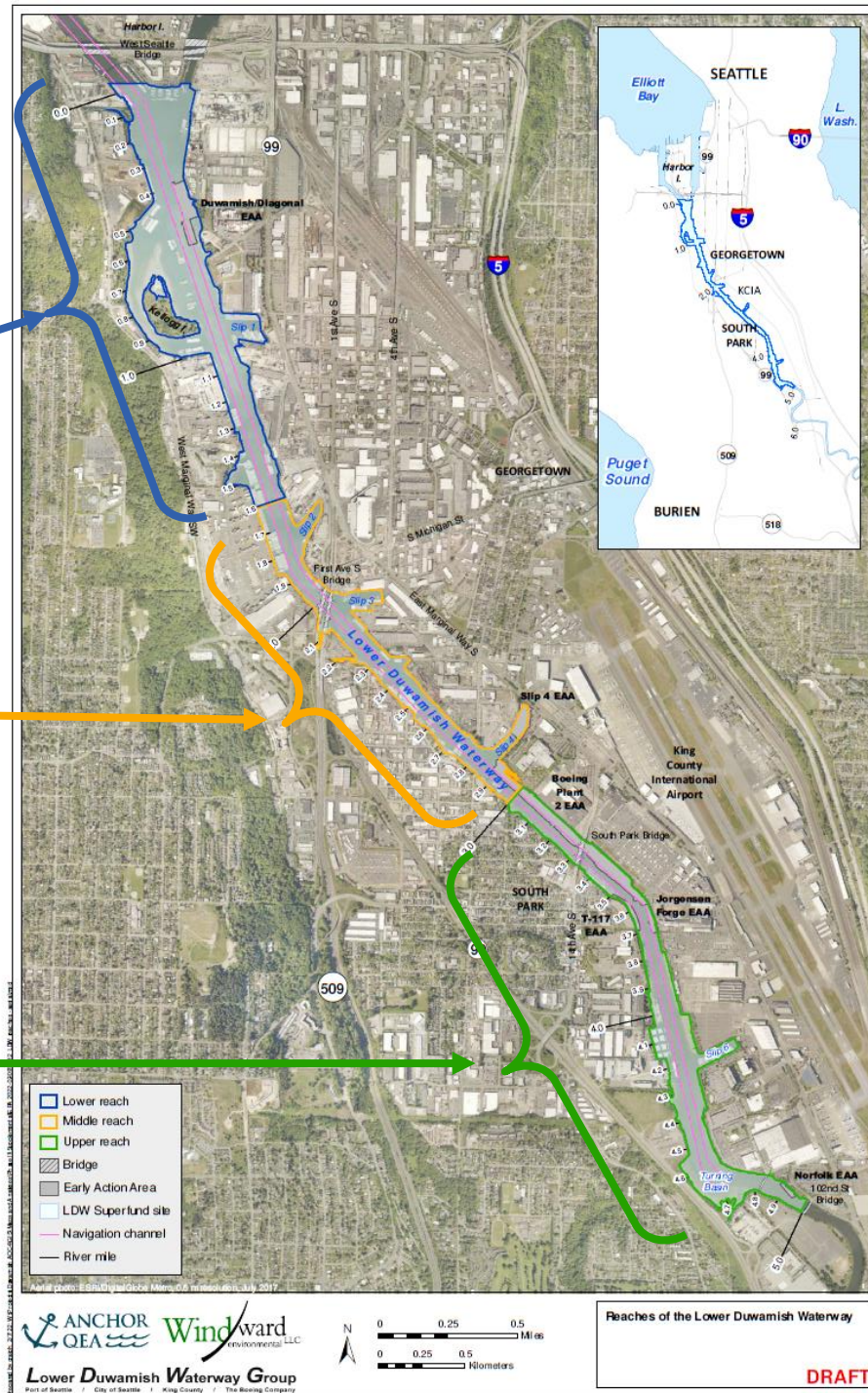
Lower

Middle

Upper

Water in the
LDW flows
from the
southeast to
northwest

Green River
(fresh water,
upstream)



Today's Purpose

Why are we here today?

EPA is about to begin the **engineering design of the cleanup in the upper reach.**

We want to hear initial thoughts from Roundtable members about **how cleanup activities can occur with reduced impact.**

EPA will also provide updates on the **middle reach** and **Earle M. Jorgensen Early Action Area.**

At the end of this presentation, we hope viewers will be able to:

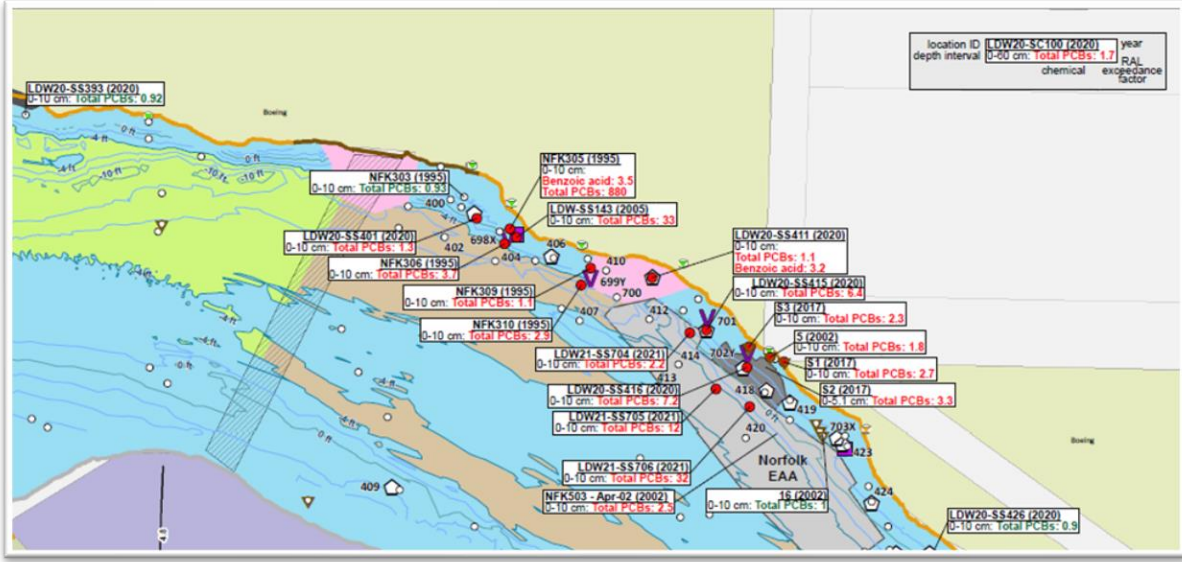
- ✓ Understand how sampling informs cleanup design
- ✓ Start to think about what cleanup activities might look like in the upper reach
- ✓ Share with EPA your ideas, concerns or opportunities during and after cleanup



Review: How sampling informs cleanup design

1

EPA takes samples of mud in different areas of the river and makes a map showing the results of each sample.



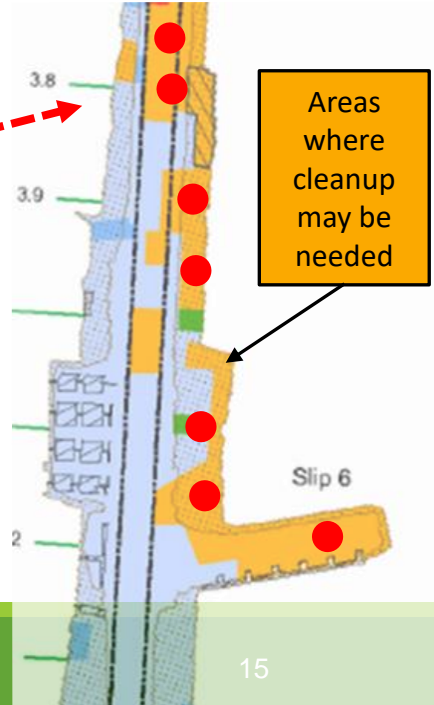
Example map:

Where was the sample taken?

When was the sample taken?

2

Cleanup areas are determined based on where samples showed that contamination is greater than EPA's acceptable limit.



LDW20-SC100 (2020)
0-60 cm: Total PCBs: 1.7

How deep into the soil was the sample taken?

What chemicals were found?

Did the amount of chemicals found exceed the upper acceptable limit?
(Above 1 = **yes**, below 1 = **no**)



Review: Some Important Superfund Documents



Record of Decision

“Based on initial study, here’s where we estimate the river will need to be cleaned and with what methods.”

Data Evaluation Report

“Here’s what we learned from more sampling of the river sediments.”

Cleanup Design

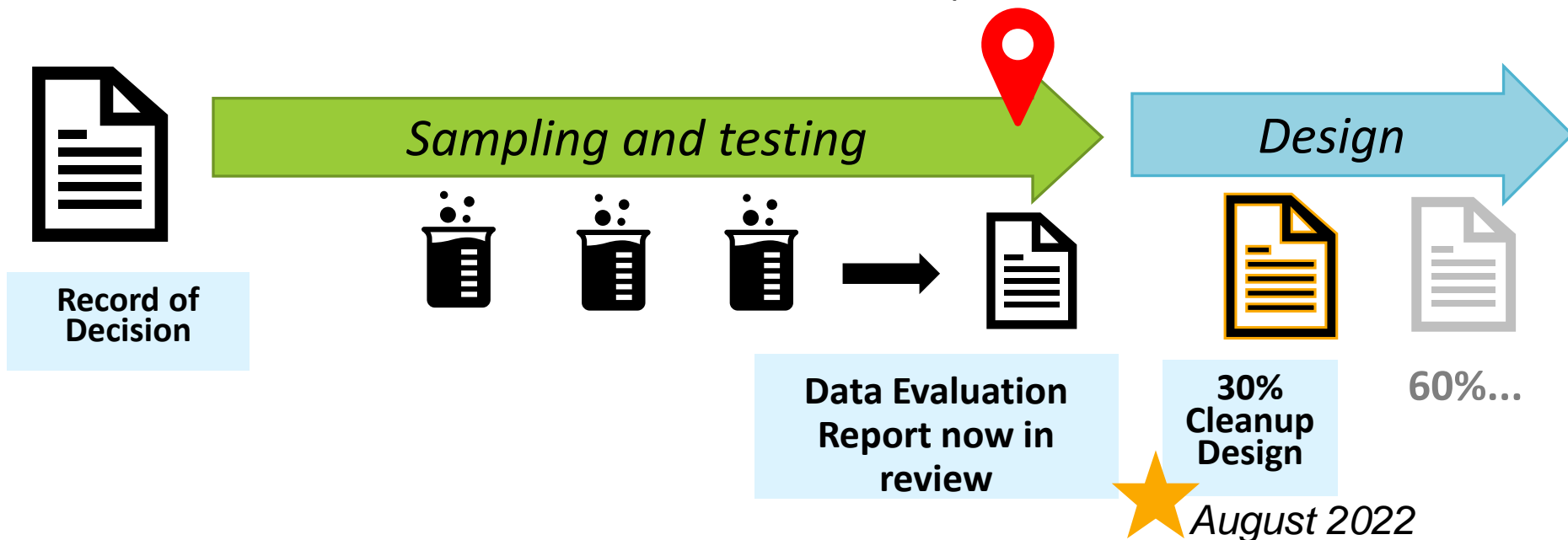
“Here’s where we **will clean** the river and **exactly how** we will do it.”

(This document is developed in multiple phases: 30%, 60%, 90%, 100%.)



UPPER REACH: Where we are now

Sampling in 2020 and 2021, combined with data from the Remedial Investigation and other studies, will be used to refine the cleanup boundaries.



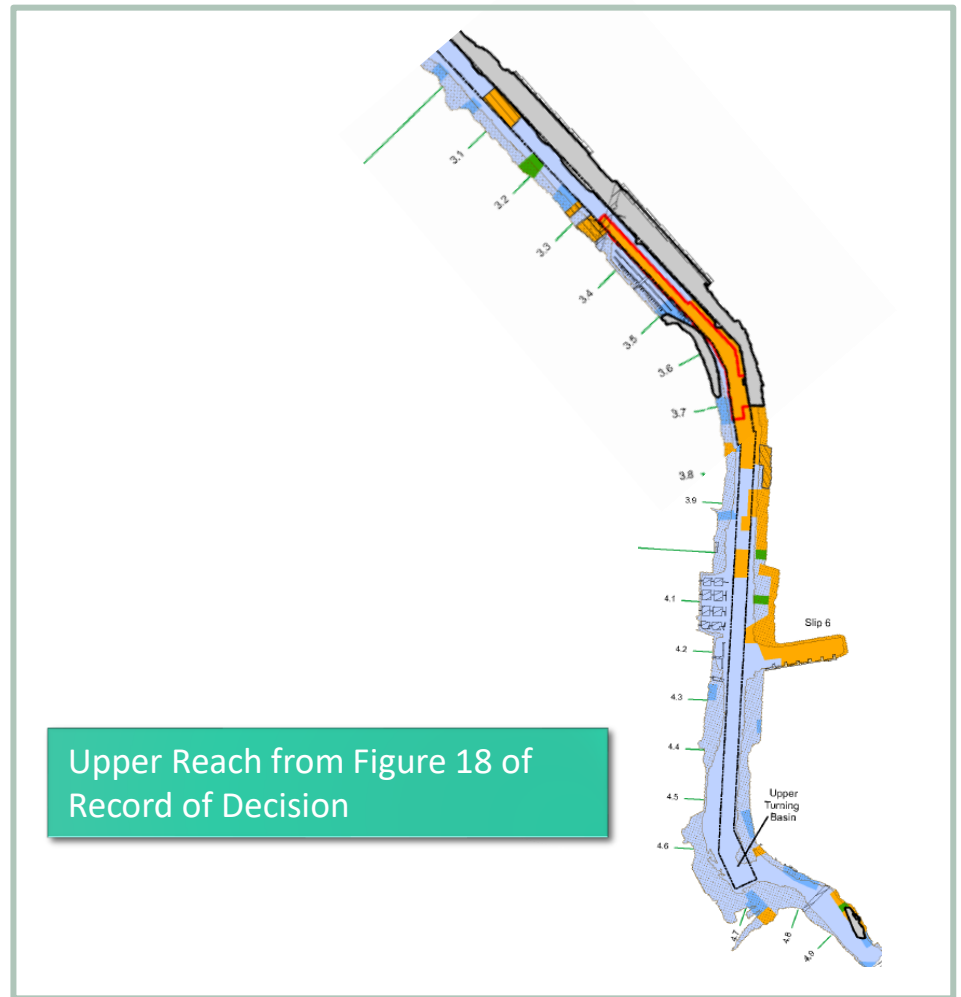
After the 30% design, we will collect any additional data we need and complete the design by late 2023.



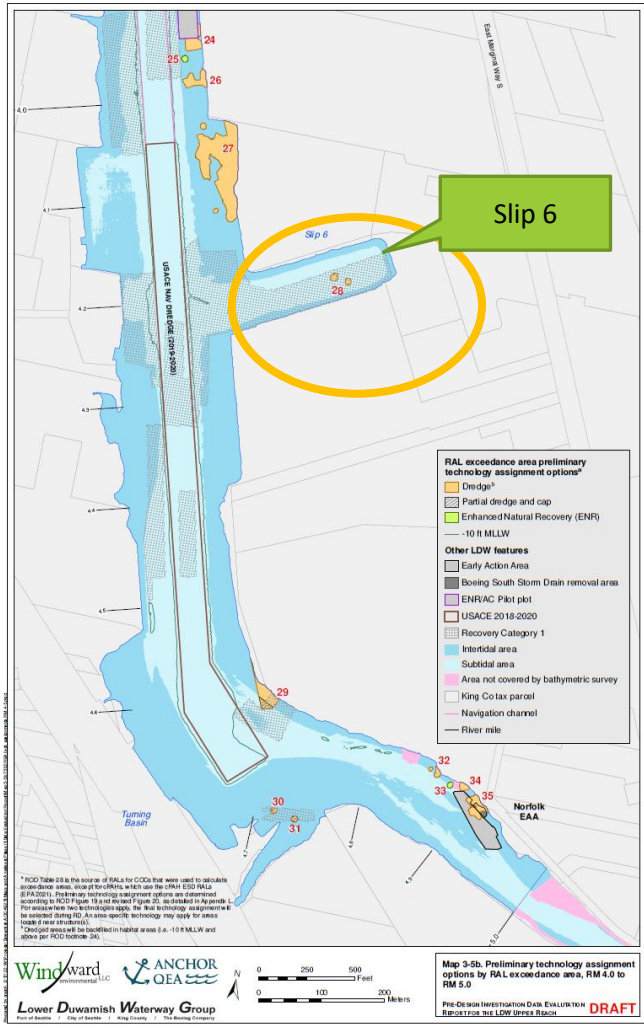
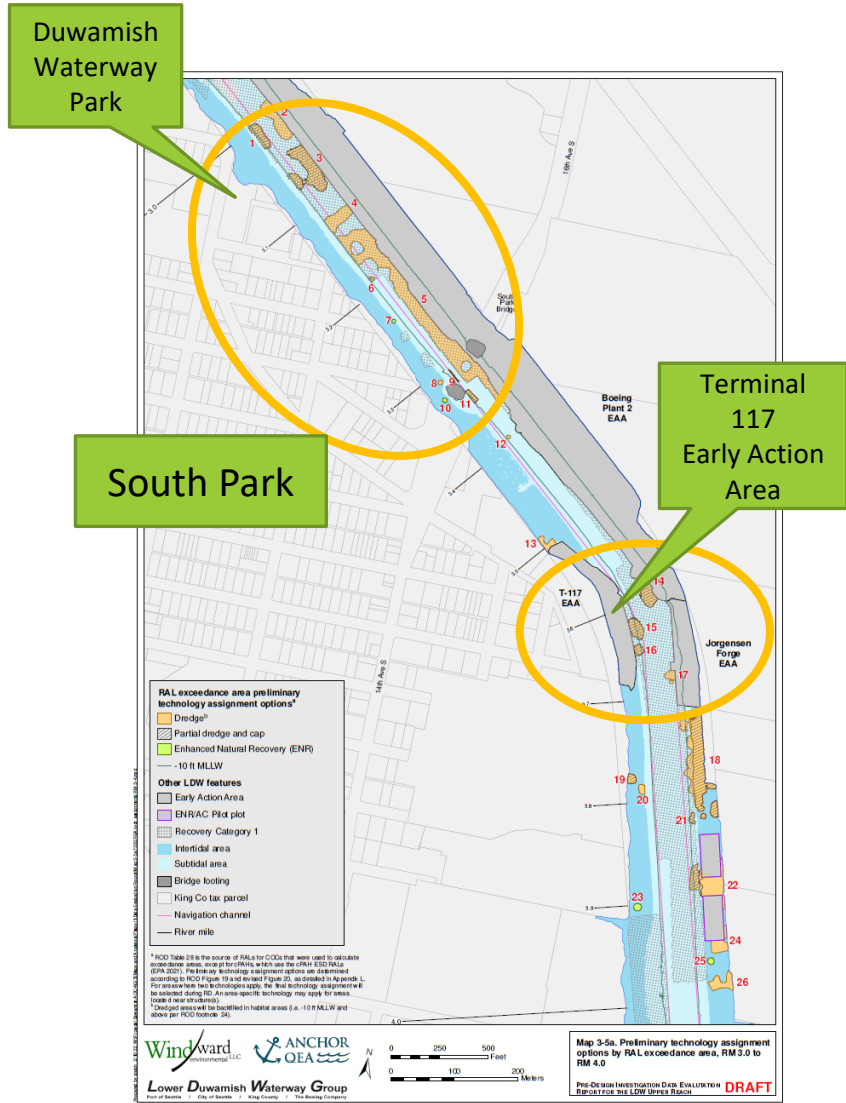
The Record of Decision (ROD) **estimated** that the upper reach cleanup would involve active cleanup in the areas marked in orange and green shown at right.



The cleanup design will tell the contractor **specifically** where to do the cleanup and how deep to dig.






Based on results of sampling, we have better defined what areas of the upper reach need to be cleaned.



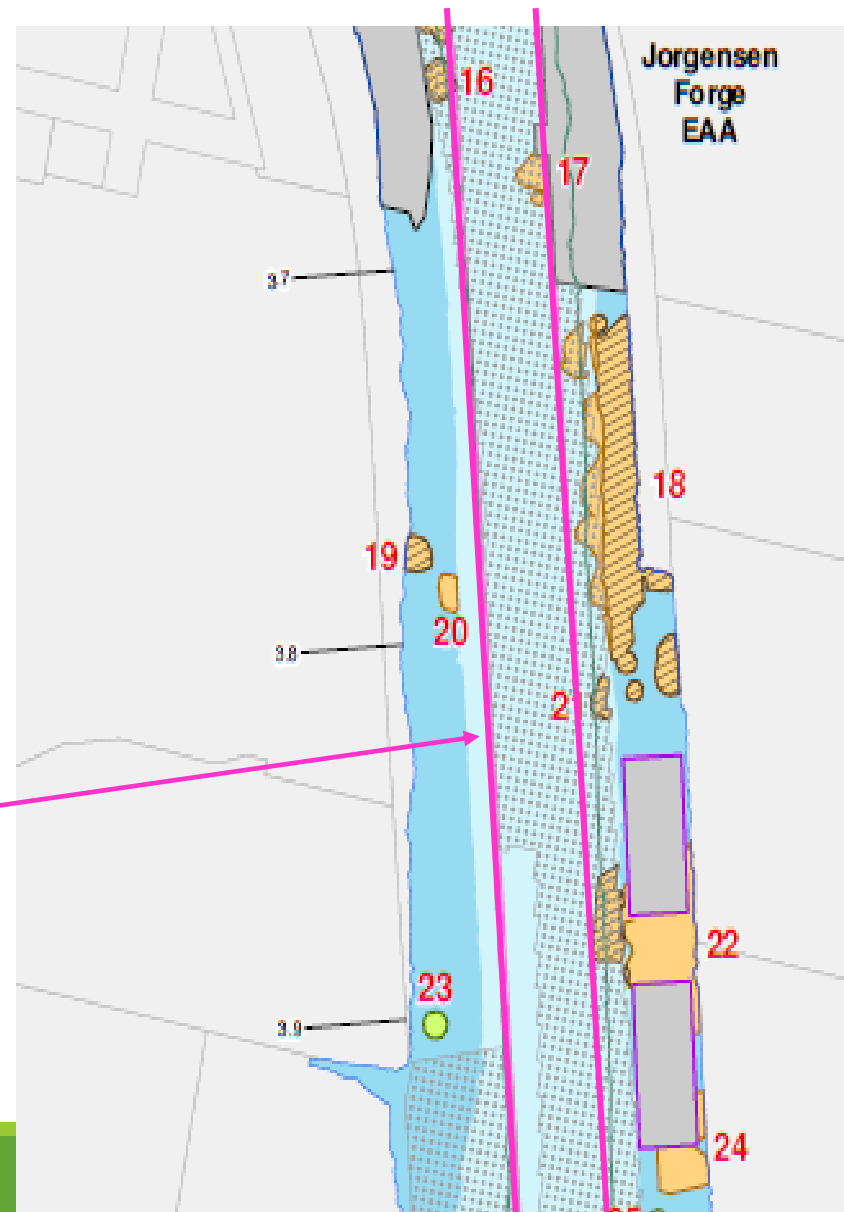
It is also becoming clear what type of cleanup actions the ROD requires in each area.

Key information:

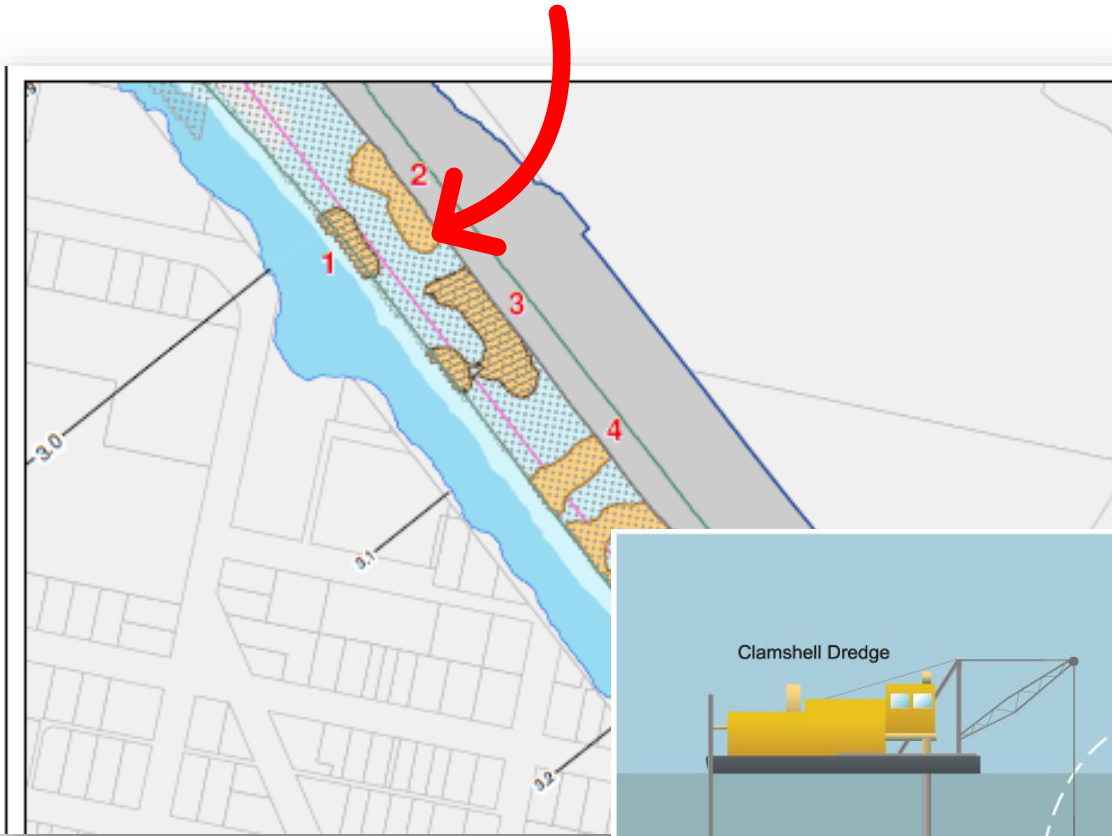
-  Dredge
-  Partial dredge and cap
-  Enhanced Natural Recovery (ENR)

The federal navigation channel is between the **pink lines**.

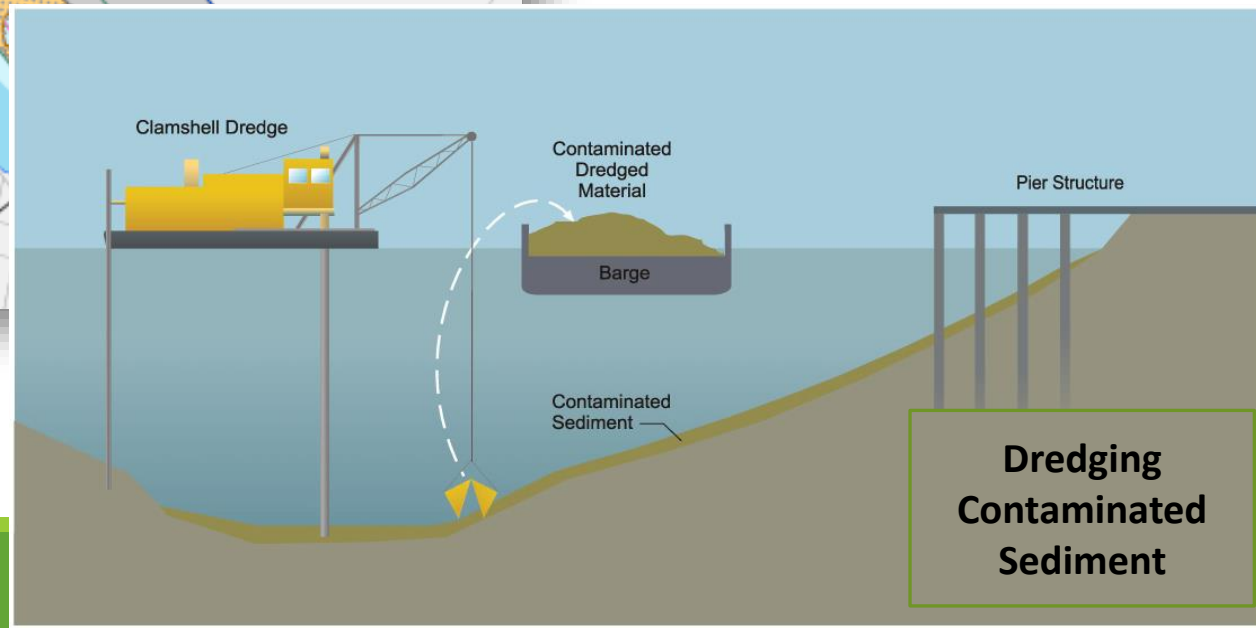
The Corps of Engineers dredges parts of the channel regularly, but other areas only as needed to allow boats to pass.



Parts of the navigation channel will be dredged.
Design will include these areas.



Contaminated sediments found here need to be dredged deep enough that, after cleanup, the Corps of Engineers can maintain the depth when needed for boats, without disturbing a cap or contaminated sediment.



What Does Cleanup Look Like in Real Life?

Cleanup involves large construction equipment and some logistical challenges.



Start to picture construction in these areas! What concerns and questions do you have?

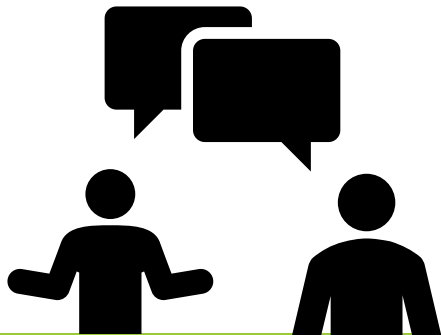


Note: We will come back to these questions in the caucus dialogues.



We may have to get into some tight places!

We need to coordinate with owners and active businesses.



How do we get under structures to do cleanup?



We don't want to damage structures.

We want our workers to be safe.





Night work is sometimes allowed.

This could involve noise and lights.

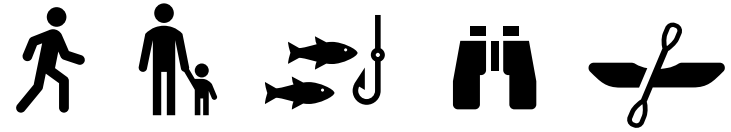


Construction on bank or intertidal areas can cause short term impacts, such as removing vegetation, but can sometimes allow for improvements to these areas in the long term.

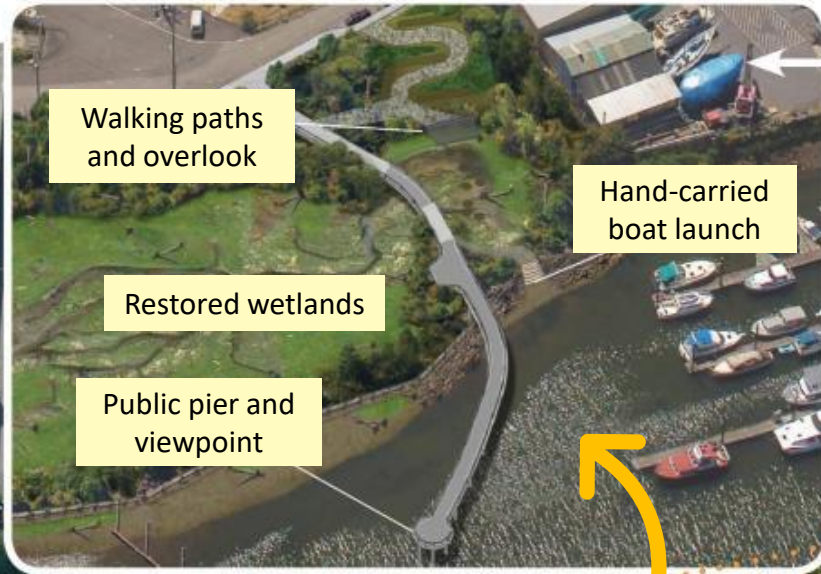


Are there opportunities that might come with cleanup?

Habitat restoration? Access for river users?



EPA can't require this with cleanup, but creative partnerships with communities may be possible.



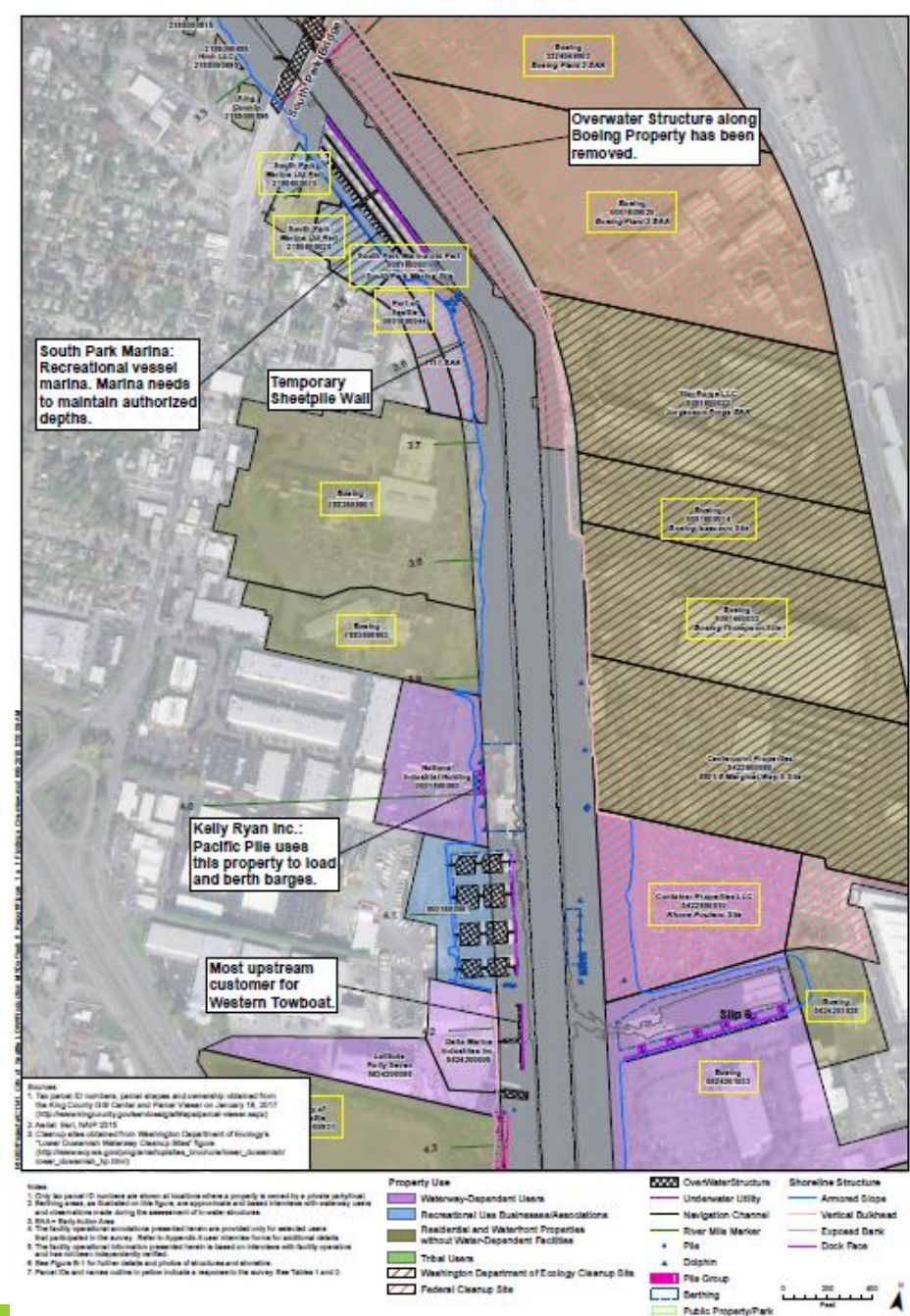
For example, Terminal 117 cleanup area and Port property along the shoreline have become a public and environmental benefit.

Restored marsh and shoreline

Duwamish River

EPA did interviews and surveys on how different areas of the river are used by different people.

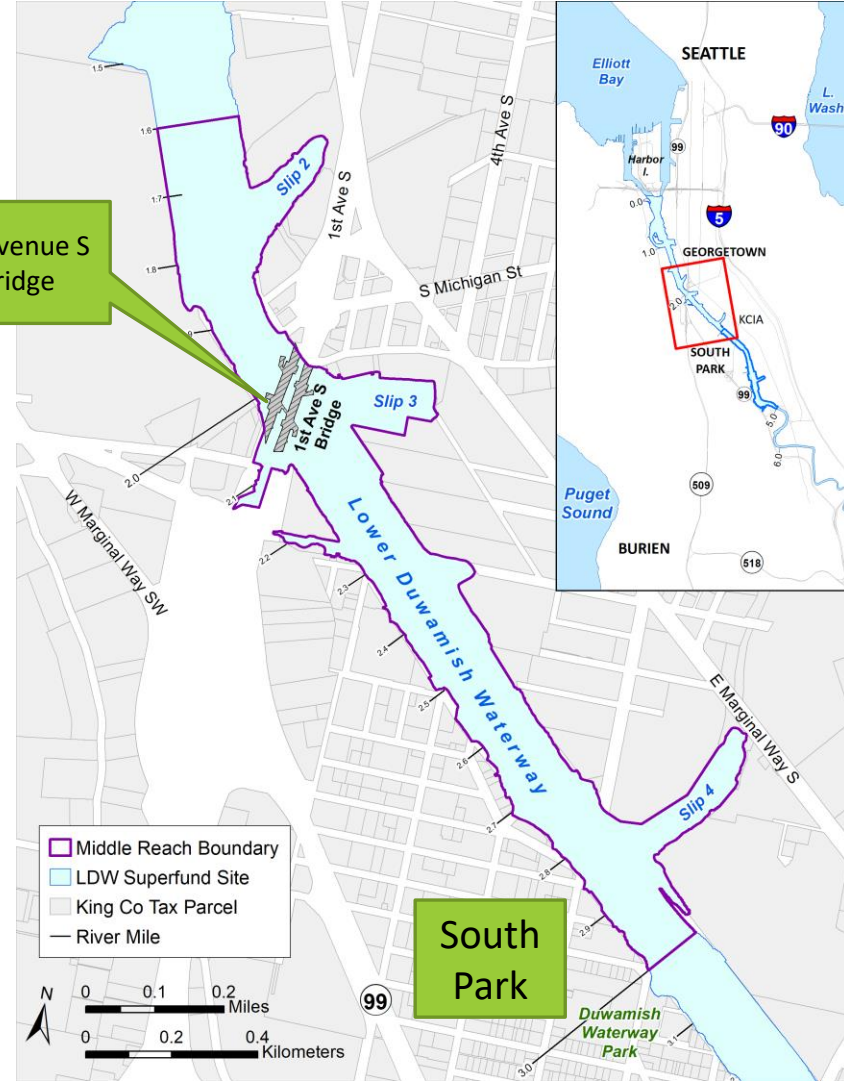
This helps us design the cleanup in a way that reduces impact on those people and activities.



Middle Reach

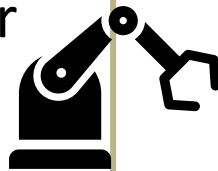
How is the **Middle Reach** different from the upper reach?

- Three different authorized depths in the navigation channel
- More structures (docks, piers, buried cables, etc) and barges
- Fewer early actions (Slip 4 and part of Boeing Plant 2)
- Fewer habitat areas
- Closer to South Park residential areas
- More contaminated areas than in Upper Reach
- More upland sites
- Channel not regularly dredged

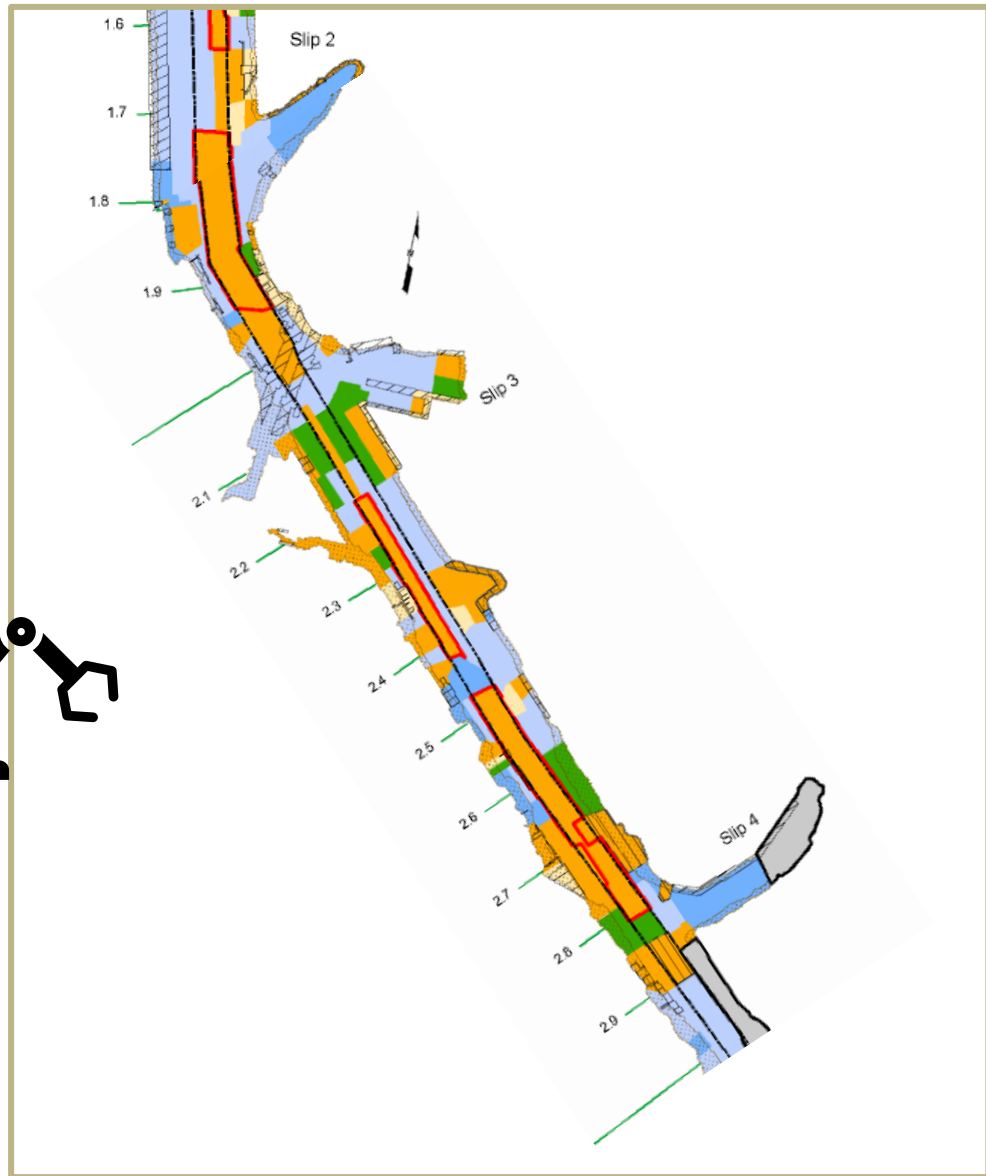




The Record of Decision (ROD) estimates that in the middle reach, more areas will require dredging than in the upper reach.



We will sample to find out!



Middle Reach Sampling in 2022 and 2023

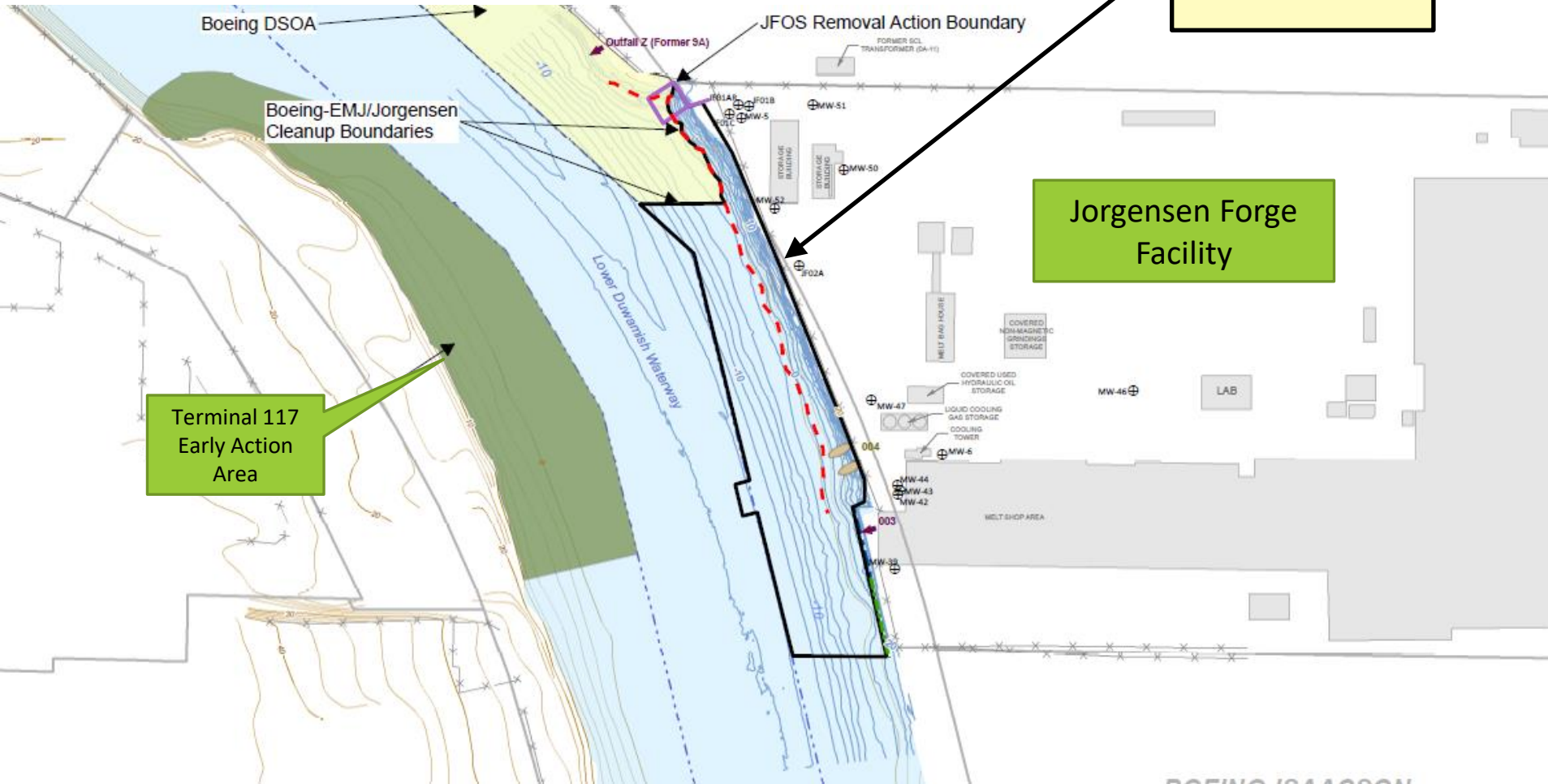
The Lower Duwamish Waterway Group (LDWG) will prepare work plans and sampling plans, due to EPA in May 2022.

The sampling schedule is in development.



Earle M. Jorgensen (EMJ) Early Action

EMJ Cleanup area



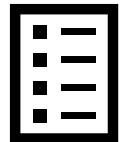
Earle M Jorgensen (EMJ)



Last summer, EPA invited public comment on the Supplemental EE/CA. This is the report that evaluates different options (alternatives) for additional cleanup work at EMJ.



EPA responded to some of the comments we received.



EPA is reviewing a revised Supplemental Engineering Evaluation/Cost Analysis. Two alternatives have been added. EPA expects to invite further comments this spring.



We will make a final decision and respond to the remaining comments and any new comments in a final responsiveness summary.





