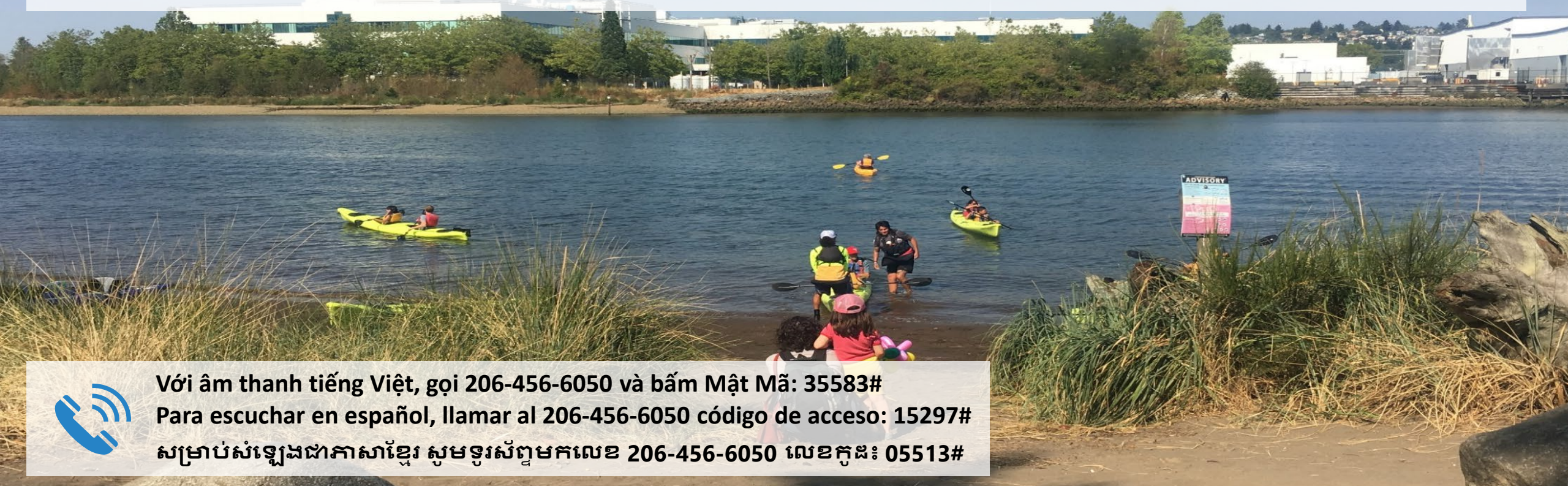


# Welcome to the Lower Duwamish Waterway Roundtable Meeting

WEDNESDAY, MARCH 31, 2021



Với âm thanh tiếng Việt, gọi 206-456-6050 và bấm Mật Mã: 35583#

Para escuchar en español, llamar al 206-456-6050 código de acceso: 15297#

សម្រាប់សំឡេងជាភាសាខ្មែរ សូមទូរស័ព្ទមកលេខ 206-456-6050 លេខកូដ: 05513#

**Do you have your meeting materials?**

Meeting materials (English, Vietnamese, Spanish, and Khmer) can be found on the Lower Duwamish Waterway Roundtable Website:

<https://www.duwamishwaterwayroundtable.com/registration>

# Do you have your meeting materials?

Meeting materials (English, Vietnamese, Spanish, and Khmer) can be found on the Lower Duwamish Waterway Roundtable Website:

<https://www.duwamishwaterwayroundtable.org/meetings>

You will need:

- Today's meeting agenda
- Latest version of Roundtable Operating Procedures
- Draft 2021-2022 Roundtable Work Plan



**Với âm thanh tiếng Việt, gọi 206-456-6050 và bấm Mật Mã: 35583#**

**Para escuchar en español, llamar al 206-456-6050 código de acceso: 15297#**

**សម្រាប់សំឡេងជាភាសាខ្មែរ សូមទូរស័ព្ទមកលេខ 206-456-6050 លេខកូដ៖ 05513#**

# Facilitator's Notes



**Keep yourself on mute unless you are speaking.**



**Balance speaking time and stay on the agenda topic.**



**Introduce yourself when speaking: “This is (name) with (affiliation, caucus/seat)”**



**In disagreements, share the reason why you feel as you do, and ask questions to find out how other feel.**



**Be respectful and courteous.**



**Be patient with potential internet connectivity issues - we will do our best to create a seamless experience!**

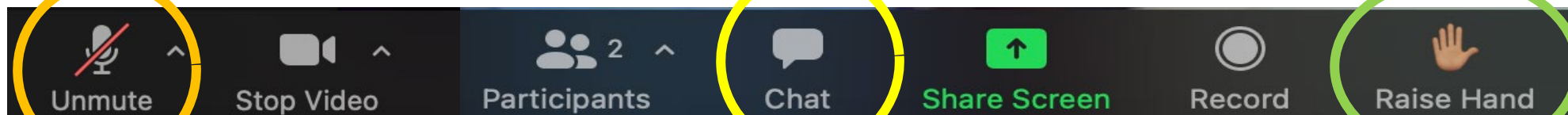


**Với âm thanh tiếng Việt, gọi 206-456-6050 và bấm Mật Mã: 35583#  
Para escuchar en español, llamar al 206-456-6050 código de acceso: 15297#  
សម្រាប់សំឡេងជាភាសាខ្មែរ សូមទូរស័ព្ទមកលេខ 206-456-6050 លេខកូដ៖ 05513#**

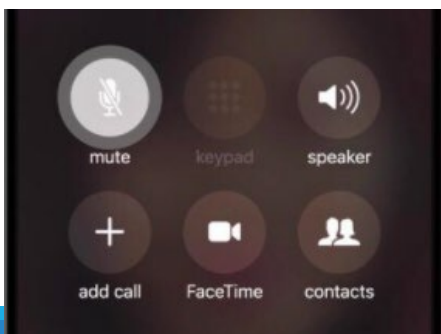
# Tips for Using Zoom

If you have a **technical problem** or want to **type a question**, please type them in the chat! Or, ask your interpreter to type for you.

If you want to **comment** or ask a **question verbally**, please click 'Raise Hand' and we will call on you.



Please **keep yourself on mute** unless you are speaking. By phone only? Use “\*6”



Với âm thanh tiếng Việt, gọi 206-456-6050 và bấm Mật Mã: 35583#

Para escuchar en español, llamar al 206-456-6050 código de acceso: 15297#

សម្រាប់សំឡេងជាភាសាខ្មែរ សូមទូរស័ព្ទមកលេខ 206-456-6050 លេខកូដ៖ 05513#

# Multilingual Meeting Best Practices

English participants should...

1. Speak slowly!
2. Take pauses every 2-3 sentences
3. Avoid acronyms
4. Use common language

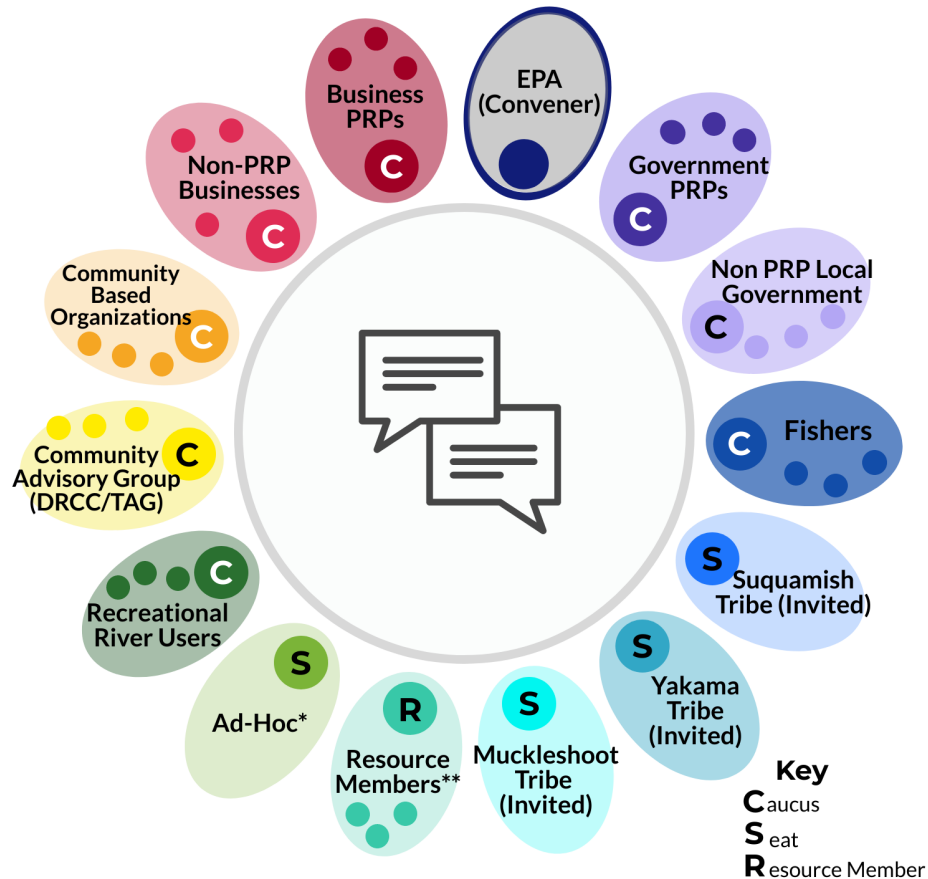


Với âm thanh tiếng Việt, gọi 206-456-6050 và bấm Mật Mã: 35583#

Para escuchar en español, llamar al 206-456-6050 código de acceso: 15297#

សម្រាប់សំឡេងជាភាសាខ្មែរ សូមទូរស័ព្ទមកលេខ 206-456-6050 លេខកូដ៖ 05513#

# Purpose of the Roundtable



The Lower Duwamish Waterway Roundtable is a forum for those **affected by the cleanup** of the Lower Duwamish Waterway Superfund Site to make **recommendations** to the US Environmental Protection Agency during the **design and construction** of the **cleanup**.

\* Non-governmental community members or interest groups not represented in the Community caucus.

\*\* Government entities that contribute information but do not develop recommendations, including but not limited to the WA Dep't of Ecology and others

# Today's Meeting Purpose

---



- Advance the development of the Roundtable by finalizing Roundtable Operating Procedures and **reviewing the draft 2021-2022 Roundtable Work Plan**
- Hear **technical updates from EPA**, including on the status of the cleanup and next steps
- Identify **topics, directly or indirectly related to cleanup design and action**, that could be important for Roundtable members to discuss, and to develop a timeline and process for including in future agendas

# Today's Agenda

---

- *Optional Technology Testing 30 minutes prior*
- Welcome and Introductions
- Roundtable Administration
- Technical Updates
- Other Site News and Updates
- Wrap Up and Next Steps
- *Optional Debrief*



# Welcome and Roundtable Introductions



**Elly Hale**

*Remedial Project Manager*  
U.S Environmental Protection Agency (EPA)



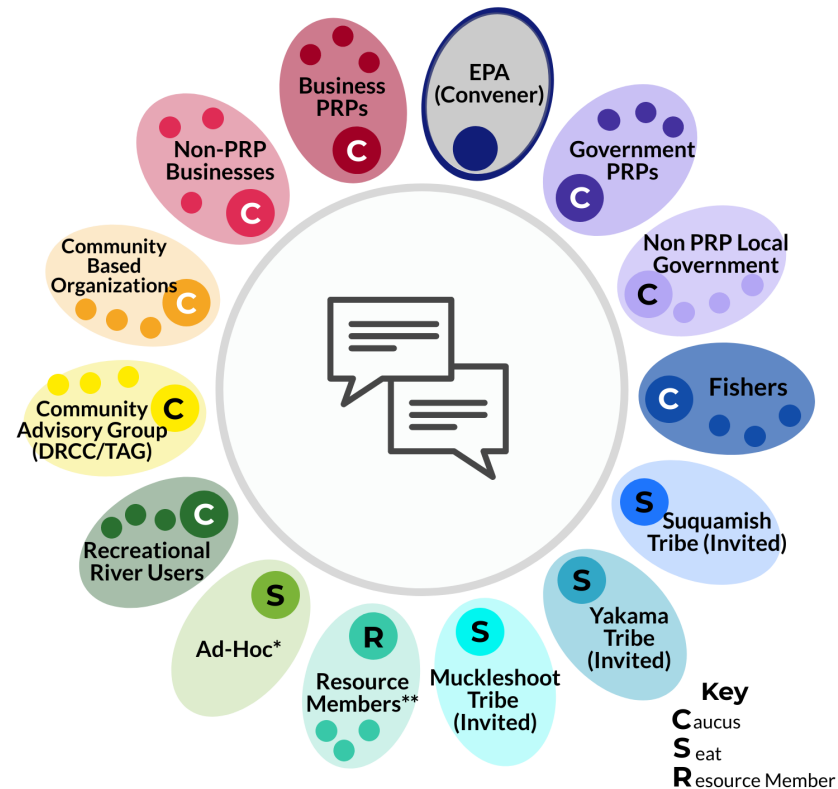
**Kay Morrison**

*Community Involvement Coordinator*  
U.S Environmental Protection Agency (EPA)

**Piper Peterson**  
*Institutional Controls Coordinator*  
U.S Environmental Protection Agency (EPA)

# Welcome and Roundtable Introductions

The facilitator will review the Roundtable caucuses and caucus leads.



\* Non-governmental community members or interest groups not represented in the Community caucus.

\*\* Government entities that contribute information but do not develop recommendations, including but not limited to the WA Dep't of Ecology and others

# Roundtable Steering Committee

---



Coordinates with EPA to guide the work of the Roundtable, including soliciting agenda topics, drafting meeting agendas, developing Roundtable work plans

Includes members from three interest groups:

- Residents (Primary: James Rasmussen, DRCC; Alternate: Edwin Hernandez Reto, community member)
- Business/industry/labor (Primary: Pat Jablonski, Nucor; Alternate: Jonathan Hall, La Farge)
- Fishers (Rotating: Sophorn Sim, Emma Maceda, Quan Phan)

# Recap of Previous Roundtable Meeting and Webinars

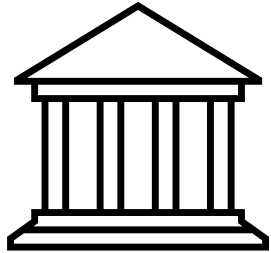
Did you watch the Roundtable webinar series  
(*or read the summaries*)? 😊

Roundtable webinar materials (English, Vietnamese, Spanish, and Khmer) can be found on the Lower Duwamish Waterway Roundtable Website:

<https://www.duwamishwaterwayroundtable.org/trainingmaterials>

10/30/19 (in-person!) Roundtable Meeting highlights:

- Discussion on Operating Procedures
- Approval of Steering Committee appointments
- Remedial Design overview
- Preliminary Design Investigation demonstration
- IC updates



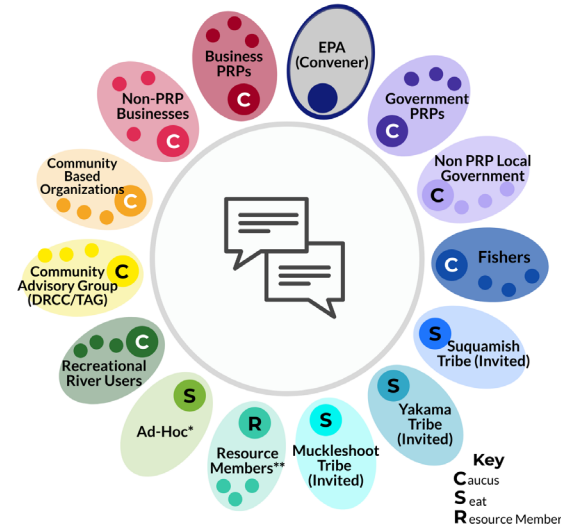
# Acknowledge Federal Administration Change

---

# Roundtable Administration



REVIEW DRAFT 2021-2022  
ROUNDTABLE WORK PLAN



APPROVAL OF ROUNDTABLE  
OPERATING PROCEDURES

# Roundtable Administration: Work Plan



REVIEW DRAFT 2021-2022  
ROUNDTABLE WORK PLAN

1. Overview of Roundtable Work Plan
2. Feedback from Roundtable members
3. Identify additional Superfund-related topics of interest for future meetings

Meeting materials (English, Vietnamese, Spanish, and Khmer) can be found on the Lower Duwamish Waterway Roundtable Website:

<https://www.duwamishwaterwayroundtable.org/meetings>

# Roundtable Administration: Work Plan



## REVIEW DRAFT 2021-2022 ROUNDTABLE WORK PLAN

Meeting materials (English, Vietnamese, Spanish, and Khmer) can be found on the Lower Duwamish Waterway Roundtable Website:

<https://www.duwamishwaterwayroundtable.org/meetings>

Recommended timing of meeting or webinar	Agenda topic	Why this topic matters	Purpose of the agenda topic	Estimated publishing date of related document(s)
Roundtable meeting Fall 2021	Carbon Amendment Pilot – Year 3 report	Report will make a recommendation about the benefits of adding activated carbon to Enhanced Natural Recovery (ENR). EPA may require this in Upper Reach and/or in later cleanup phases (if additional data are needed).	Based on the report, give input to EPA on the following options: incorporate Carbon Amendment in Enhanced Natural Recovery (ENR) for the Upper Reach, have Lower Duwamish Waterway Group (LDWG) get more data to make the decision in time for later phases, or decide not to use carbon in Enhanced Natural Recovery (ENR) at LDW at all?	March 23, 2021
	Phase 2 Fieldwork Summary	This topic keeps the Roundtable informed on where sampling was done and what results are. This fieldwork will inform where clean up actions take place.	Report back on what Phase 2 fieldwork was done over the summer and when reports will be available	Field work starts only after Quality Assurance Project Plan (QAPP) is approved by EPA. Field dates are uncertain and depend on the work to be done, logistics, and suitable site conditions.
	Tiering Decisions	EPA decides what tiered analysis will be done based on Quality Assurance Project Plan (QAPP) and initial results.	Keep Roundtable members up to date with Phase 2 fieldwork and describes/shares data, as available.	If Quality Assurance Project Plan (QAPP) includes a tiered decision process, the timing may not allow for Roundtable input to tiering. Quality Assurance Project Plan (QAPP) will make tiering criteria as clear as possible.
	Other topics suggested by Steering Committee (SC) and agreed to by EPA (see Attachment B for ideas)	The Roundtable should have the opportunity to bring forward issues relevant to other members.	Roundtable members can discuss issues and solutions with each other and EPA.	

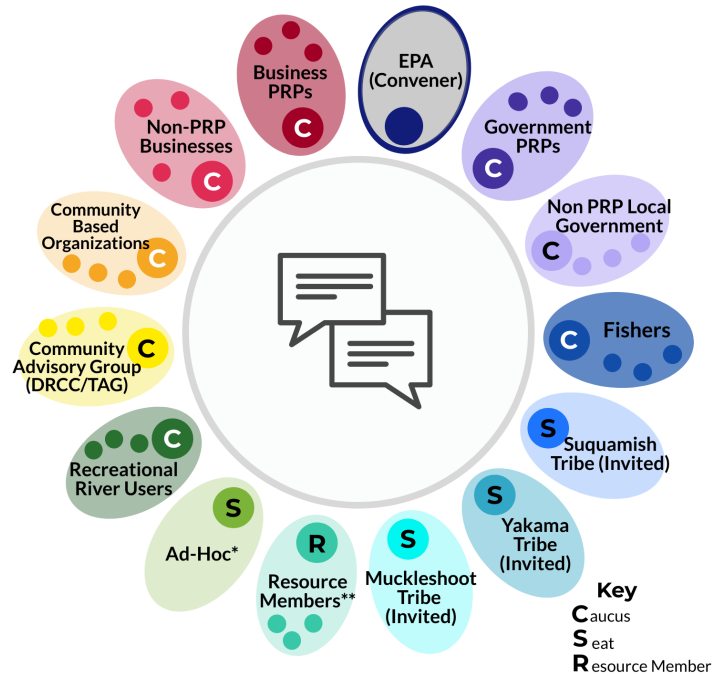


# Roundtable Administration: Work Plan

3. Identify additional Superfund-related topics are of interest for future meetings

Proposed Agenda Topic	Why this topic matters

# Roundtable Administration: Operating Procedures



## APPROVAL OF ROUNDTABLE OPERATING PROCEDURES

1. Overview of updates since last meeting

2. Questions or comments by caucus

Meeting materials (English, Vietnamese, Spanish, and Khmer) can be found on the Lower Duwamish Waterway Roundtable Website:

<https://www.duwamishwaterwayroundtable.org/meetings>

#### 4. Other Roundtable Considerations

- A. **Compensation:** EPA's legal advisors have confirmed that EPA is not permitted to provide financial stipends to community members for their participation. Other entities (e.g. government agencies, foundations, nonprofit organizations, businesses, etc.) may independently provide community participation stipends, but EPA cannot direct ~~entities to do this or be involved in decisions about compensation~~ or encourage entities to do this or be involved in decisions about compensation. Other entities involved in the Roundtable will work to find funding to compensate community members who require financial support for their participation. If funding is not available to support stipends for community members, all Roundtable members will be alerted to this in advance of Roundtable meetings. If Roundtable members choose to not participate in the Roundtable as a result of unavailable community stipends, EPA will work with Roundtable members to identify potential solutions, or, if none are acceptable, to recommend whether to dissolve the Roundtable. EPA will make a decision, considering all options for public involvement, and will move forward with remedial design and action.
- B. **Attendance:** Roundtable Members and members of the public are encouraged to attend Roundtable meetings consistently so that EPA hears their perspective and so that they stay abreast of cleanup updates.

## B. Role of the Steering Committee

~~Below is information on the purpose of the Steering Committee will be and how it is established that consists of 3-5 Roundtable Members from among the member types listed on page 6.~~

- Purpose: The Steering Committee will coordinate with EPA to guide the work of the Roundtable, including soliciting agenda topics, drafting meeting agendas, developing Roundtable work plans, and other duties as assigned. ~~Roundtable Members can submit~~ The Steering Committee will meet either by phone or in person up to twice prior to each Roundtable meeting. Steering Committee members (both members and alternates) will receive an agenda topic a week in advance of their meetings. Note: any Roundtable Member can directly request an agenda topic to EPA and the Steering Committee, or any Steering Committee member at least a month six weeks prior to a Roundtable meeting.
- ~~Steering committee~~ Steering Committee Composition: EPA will establish a Steering Committee with members from three interest groups that have been actively involved in the Roundtable to date and which are likely to be impacted by the cleanup: residents, business/industry/labor, and fishers. As Section 3B describes, the Community Advisory Group (CAG) Caucus, the non-CAG Community Caucus, and Recreational River Users represent residential interests in the Duwamish Valley; the Potentially Responsible Party (PRP) Business/Industry/Labor Caucus and Non-PRP Business/Industry/Labor Caucus collectively represent the interests of business/industry/labor; and the Fishers Caucus represents the interests of the fishing and fish consuming community associated with the Duwamish River.
- Nominations: Steering Committee members may be self-nominated and/or nominated by their caucuses during Roundtable meetings or during separate caucus. Steering committee membership is approved by EPA. Every year meetings. EPA and the Roundtable will be notified of these nominations.



Can we use these Operating  
Procedures for now?

---

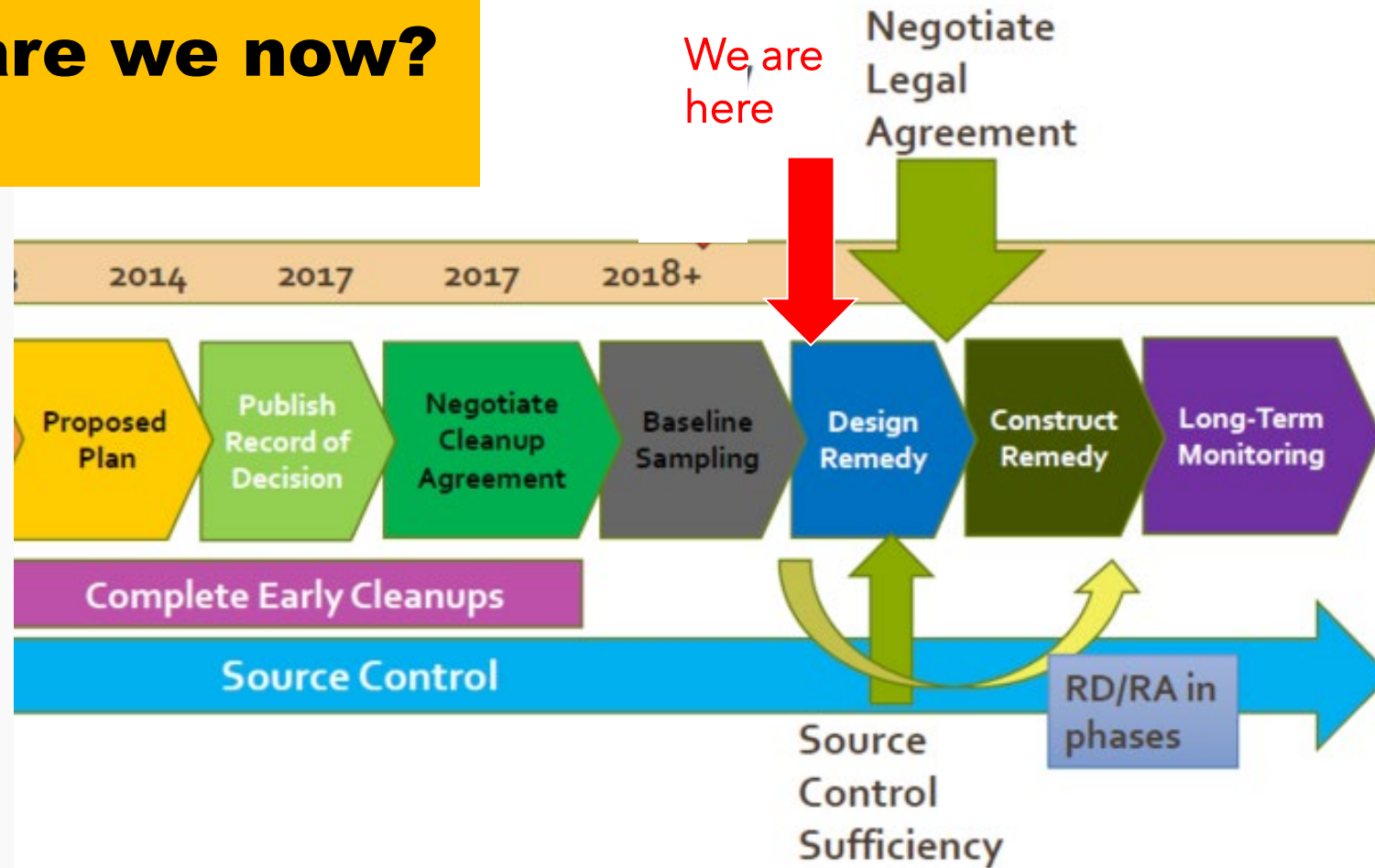


# Lower Duwamish Waterway Technical Updates

---

**ROD – 2014**  
**It is now 2021**  
**Process is slow – but without**  
**deadlines, we won't get there**

# Where are we now?





# Phasing Remedial Design (RD)/Remedial Action (RA)

**Upper Reach Remedial Design\***  
 Pre-design Investigations  
 30% design  
 60% design  
 90% design  
 100% design

**Remedial Action**  
 Remedial Action Work Plan

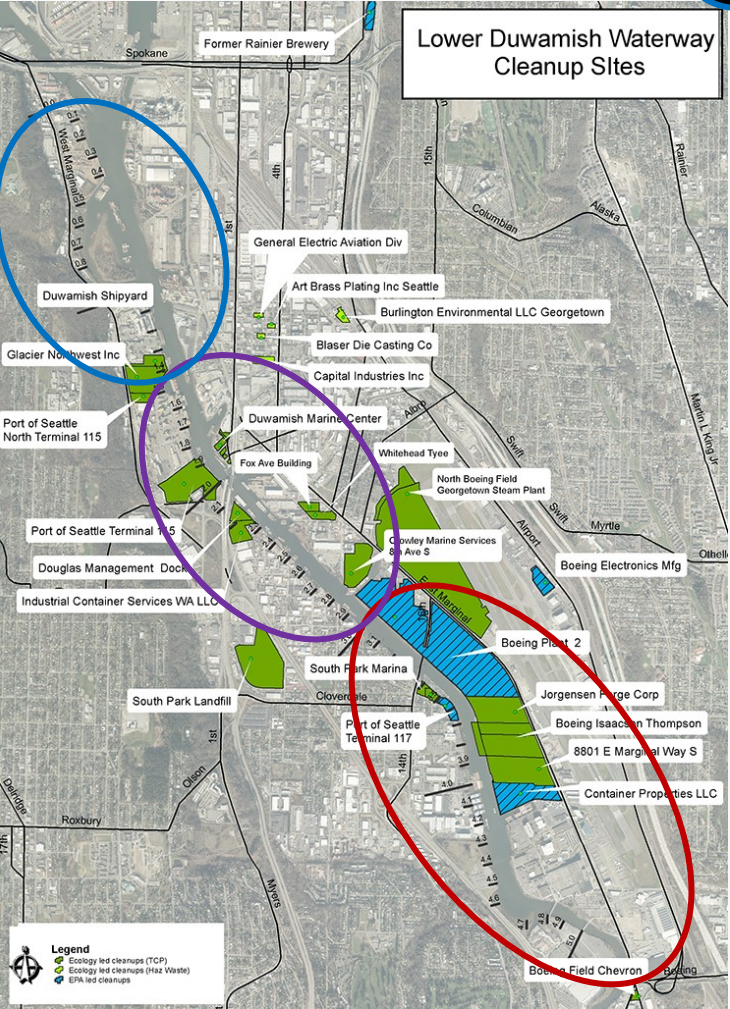
**Middle Reach Remedial Design**  
 Pre-design Investigations  
 30% design  
 60% design  
 90% design  
 100% design

**Remedial Action**  
 Remedial Action Work Plan

**Lower Reach Remedial Design**  
 Pre-design Investigations  
 30% design  
 60% design  
 90% design  
 100% design

**Remedial Action**  
 Remedial Action Work Plan

\*Administrative Order on Consent – Amendment #4

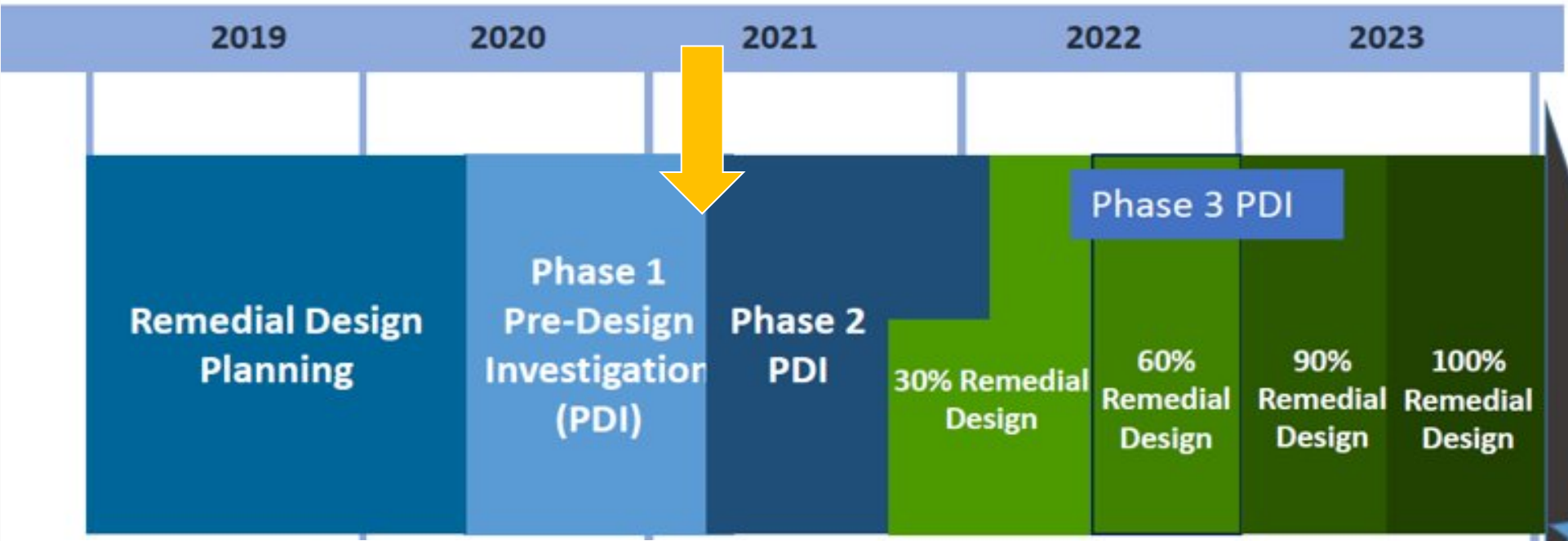


Lower Reach  
 Middle Reach  
 Upper Reach

**Legend**  
 Ecology led cleanups (TCP)  
 Ecology led cleanups (HAZ Waste)  
 EPA led cleanups

# Upper Reach Remedial Design Schedule (may change)

We are here



PDI=pre design investigation

Ready for contracting and upper reach cleanup

# Lower Duwamish Waterway Technical Updates



1. **Information Only:** Phase I Pre-Design Investigation Data Evaluation Report for Upper Reach
2. **Opportunity for Feedback:** Quality Assurance Project Plan (QAPP) for Phase 2 Pre-Design Investigation Sampling for Upper Reach
3. **Comment Period Open:** Explanation of Significant Differences for cPAHs



# Phase I Pre-Design Investigation Data Evaluation Report for Upper Reach

## What is the Phase I Pre-Design Investigation Data Evaluation Report?

Lower Duwamish Waterway Group (LDWG) prepared a report summarizing 2020 pre-design investigation samples collected of sediment samples and visual surveys of shoreline.

### Why this topic matters:

This draft report summarizes Phase 1 (2020) sampling results and other site data relative to Record of Decision (ROD) action levels and provides an initial idea of remedial boundaries for the different cleanup methods. These initial boundaries will change, but they help identify data gaps to be filled in Phase 2 (2021) sampling.

The Phase 1 Report is not a decision document itself, but it presents data that will help determine final cleanup areas in the Upper Reach.

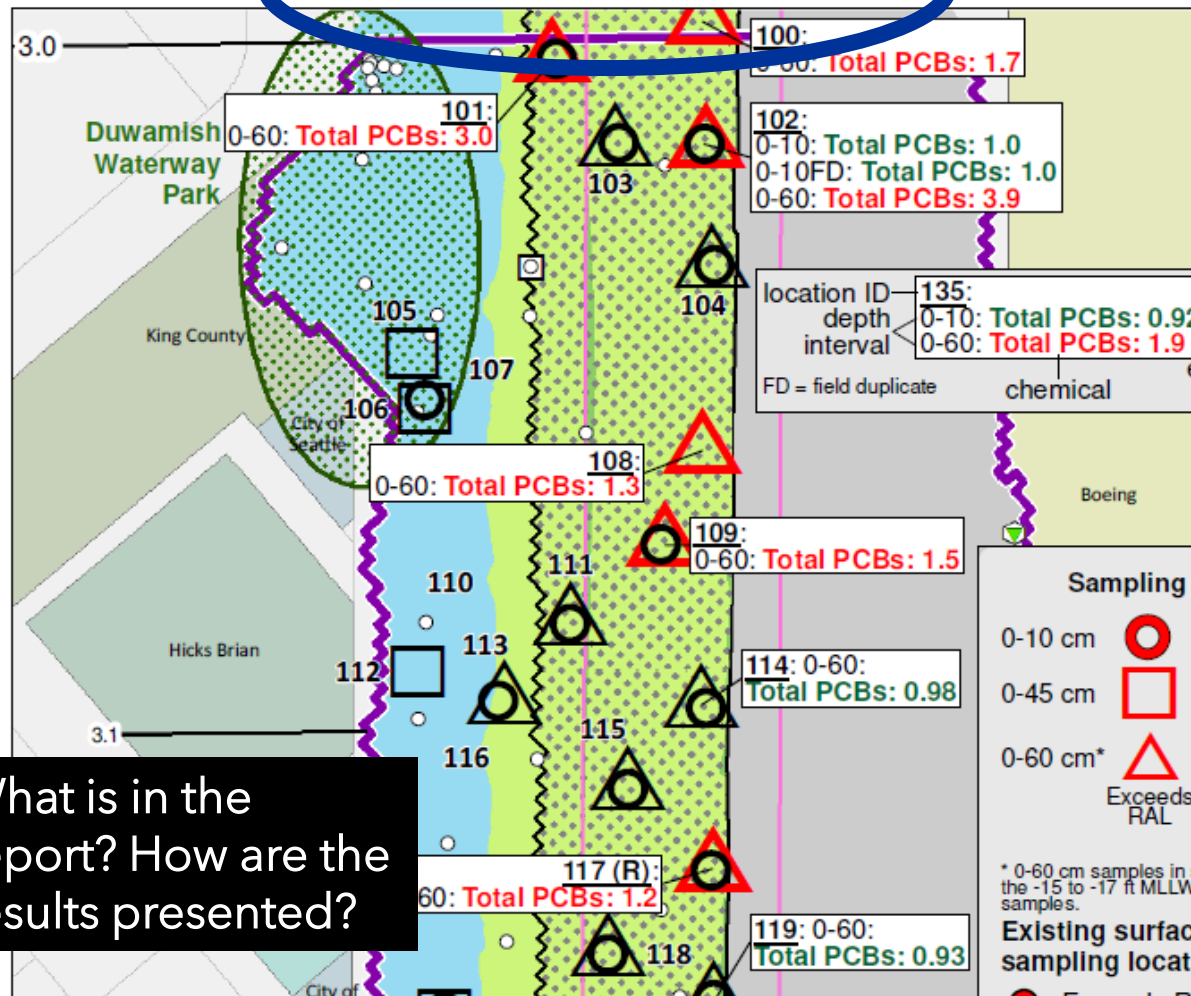


# Phase I Pre-Design Investigation Data Evaluation Report for Upper Reach

## What is in the report? How are the results presented?

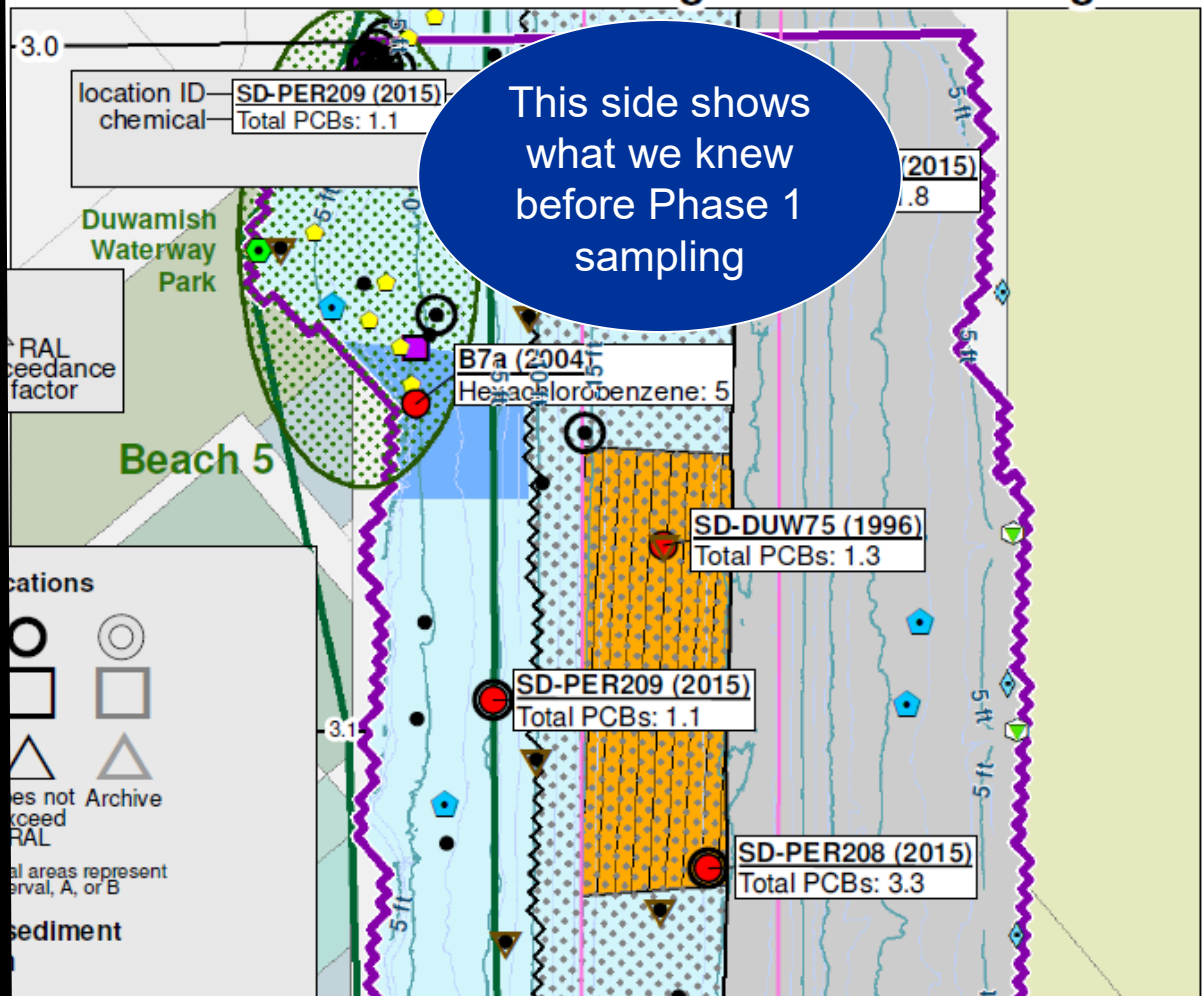
- 2020 results are combined with older data to estimate *initial* areas that may have to be cleaned up. Why initial? We are using what we know (Phase 1 and other data) to determine where we need to know more. In 2021, Phase 2 will try to fill “data gaps” needed to complete the cleanup design by additional sampling or by analyzing additional samples.
- Maps show which sample locations have contamination levels higher than action levels in the cleanup plan (color), by how much (factor), and at which depth (shape).

# Phase I PDI Results



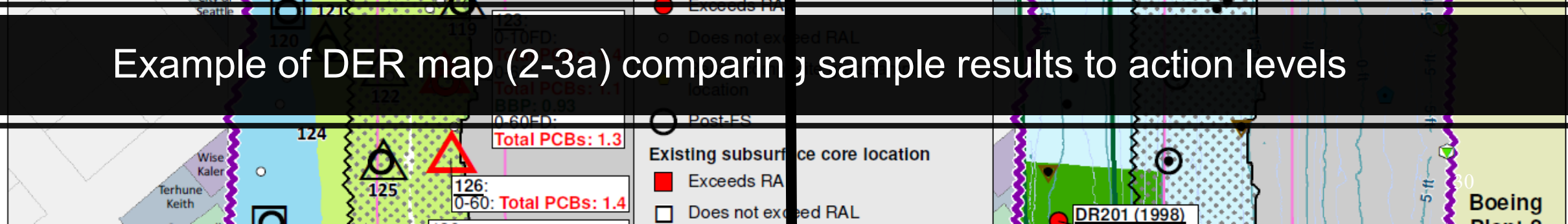
What is in the report? How are the results presented?

# Pre-PDI Results and ROD Figure-18 Technologies



This side shows what we knew before Phase 1 sampling

Example of DER map (2-3a) comparing sample results to action levels



# How do we draw lines around sample locations to define an area?

- *If one sample is "dirty" and one is "clean," where do we draw a line?*
- *If one sample is "cap" and one is "dredge," where do we draw the line?*

**We use "INTERPOLATION"**

Interpolation takes two samples and estimates where the values go from "above action level" to "below action level" to draw outline.

3 This shows initial areas where cleanup may be needed, and gives results of sampling compared to action levels, using "exceedance factors"—Greater than 1 means "above action level"

**Area with RAL exceedances**

**Surface sediment (0-10 cm) sampling location**

- Exceeds RAL
- Does not exceed RAL
- ★ Beach composite grab sampling location

**Subsurface core location**

**Subtidal (0-60 cm)**

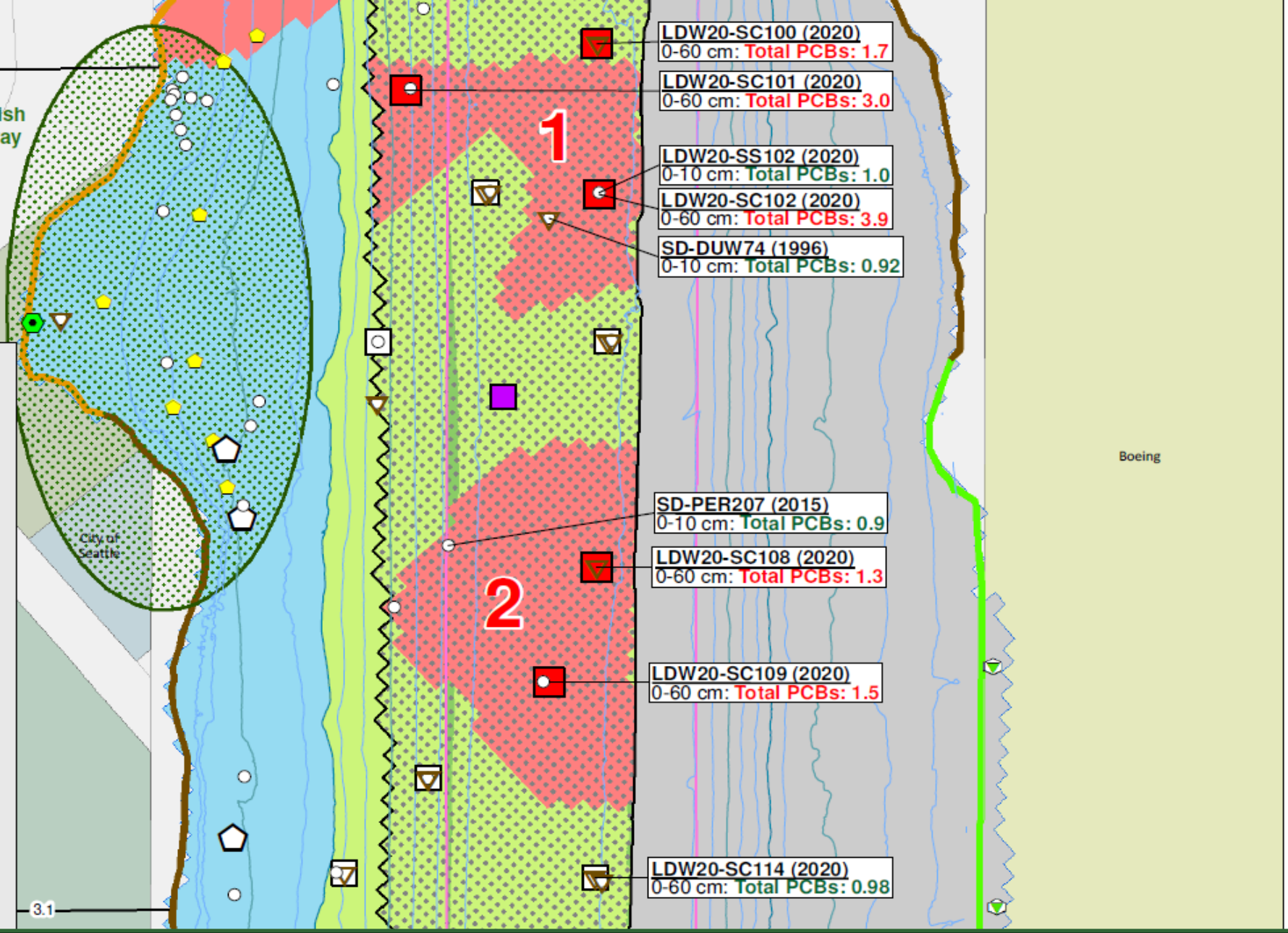
- Exceeds RAL
- Does not exceed RAL

**Intertidal (0-45 cm)**

- ⬠ Does not exceed RAL

**Other sampling locations**

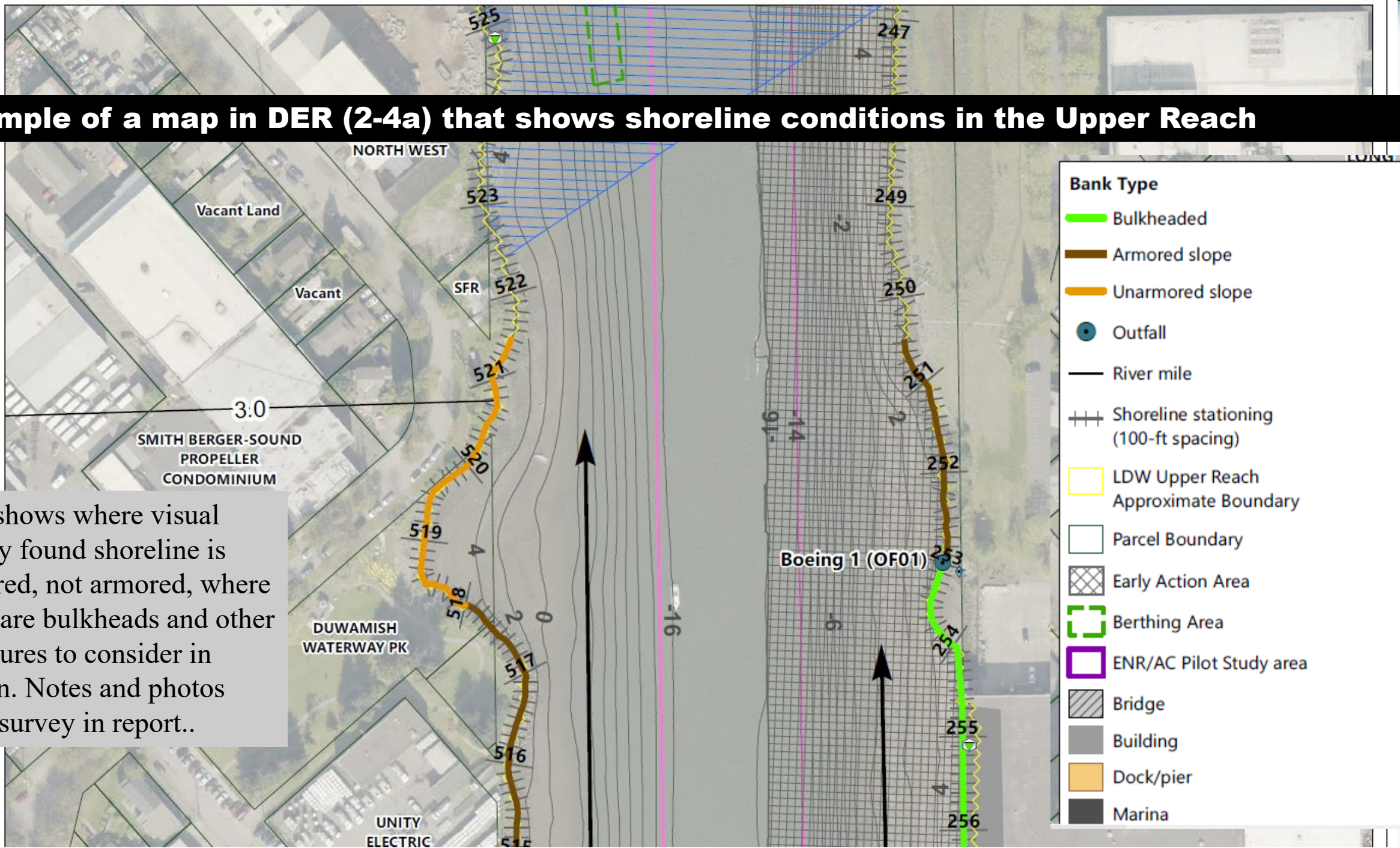
- ▽ Only analyzed for PCBs
- Core without appropriate RAL interval
- ⊕ Bank sampling location (no exceedance)



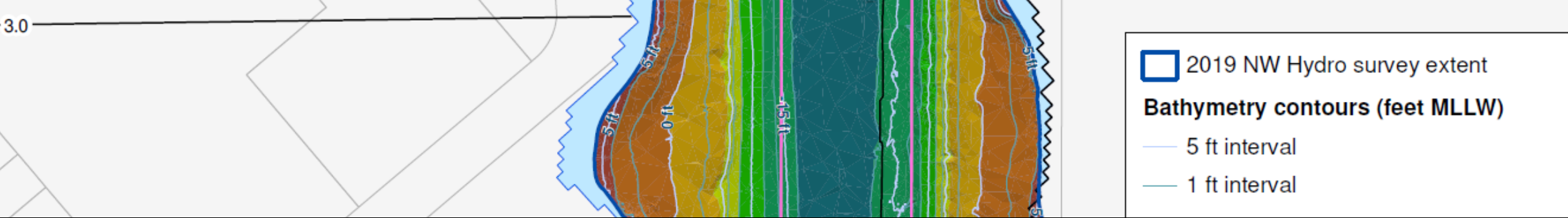
**Example of DER map (4-1b) showing interpolation of areas with contaminant levels higher than remedial action levels.**



# Example of a map in DER (2-4a) that shows shoreline conditions in the Upper Reach

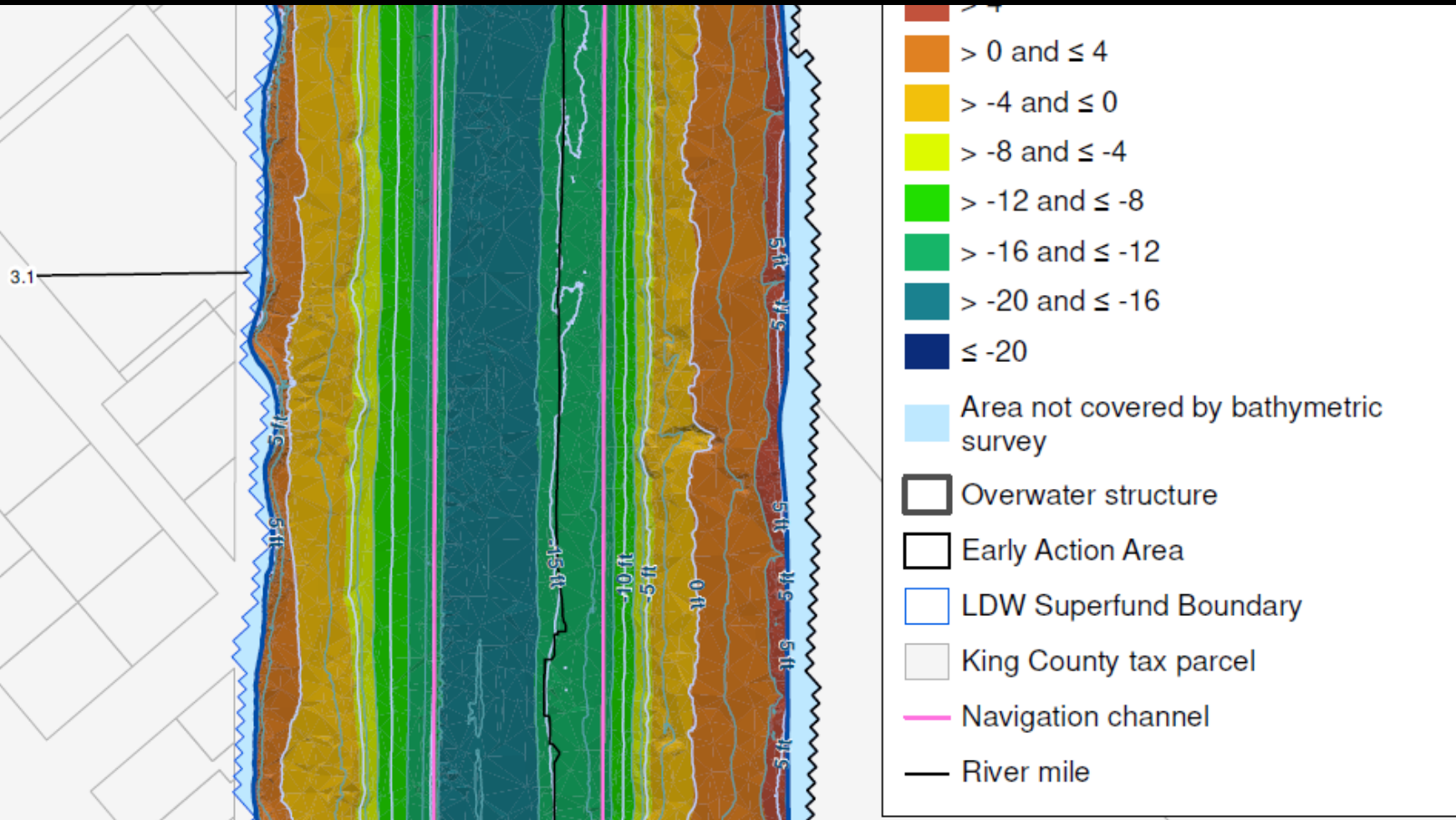


This shows where visual survey found shoreline is armored, not armored, where there are bulkheads and other structures to consider in design. Notes and photos from survey in report..



**Example of a map in DER (2-6a) that shows water depth (“bathymetry”) in Upper Reach**

This is updated information.  
 Helps define what areas are  
 intertidal,  
 subtidal, and  
 in navigation channel





# Phase I Pre-Design Investigation Data Evaluation Report for Upper Reach

How do I access the report?

Please contact Elly Hale ([hale.elly@epa.gov](mailto:hale.elly@epa.gov)) if you want to see the report. The report is in multiple parts, and some parts are very large.

How will EPA use the report?

EPA will use the report to document the Phase 1 sampling and surveys and to support plans for Phase 2 work.



# Phase I Pre-Design Investigation Data Evaluation Report for Upper Reach

Summary of comments made to Lower Duwamish Waterway Group (LDWG)  
from EPA



# Roundtable questions on the Phase I Pre-Design Investigation Data Evaluation Report for Upper Reach





# Opportunity for Feedback: Quality Assurance Project Plan (QAPP) for Phase 2 Pre-Design Investigation Sampling for Upper Reach



# Quality Assurance Project Plan (QAPP) for Phase 2 Pre-Design Investigation Sampling for Upper Reach

Why this topic matters:

This plan describes what sampling the Lower Duwamish Waterway Group (LDWG) proposes for 2021 sampling.

**Opportunity for Feedback:** Interested Roundtable members can provide written feedback for EPA to consider by April 12. *This is not a formal public comment period.*

## What is the **Quality Assurance Project Plan (QAPP)** for Phase 2 Pre-Design Investigation Sampling?

The plan describes how chemical, geotechnical, and physical information will be collected in 2021.

- LDWG provided Phase 2 plan (QAPP) to EPA on March 12, 2020
- EPA is now reviewing the plan (QAPP) for Phase 2 sampling
- Input from reviewers due to EPA by April 12



## Quality Assurance Project Plan (QAPP) for Phase 2 Pre-Design Investigation Sampling for Upper Reach

Phase 2 sampling is likely to include the following:

- Samples in likely dredge areas to see how deep to dredge
- Samples to make sure the shoreline (bank) is not a source of pollution
- Additional sampling of top 10 cm, 45 cm, or 60 cm depths for site contaminants, to make more exact outlines of areas above RALs.
- In areas that require remediation, Phase 2 sampling will collect other information, such as slope stability, strength, ability to dredge, presence of rip-rap, and geotechnical information.
- Sediment sampling near and under docks, piers and other structures, if these areas can be accessed safely.

## Quality Assurance Project Plan (QAPP) for Phase 2 Pre-Design Investigation Sampling for Upper Reach

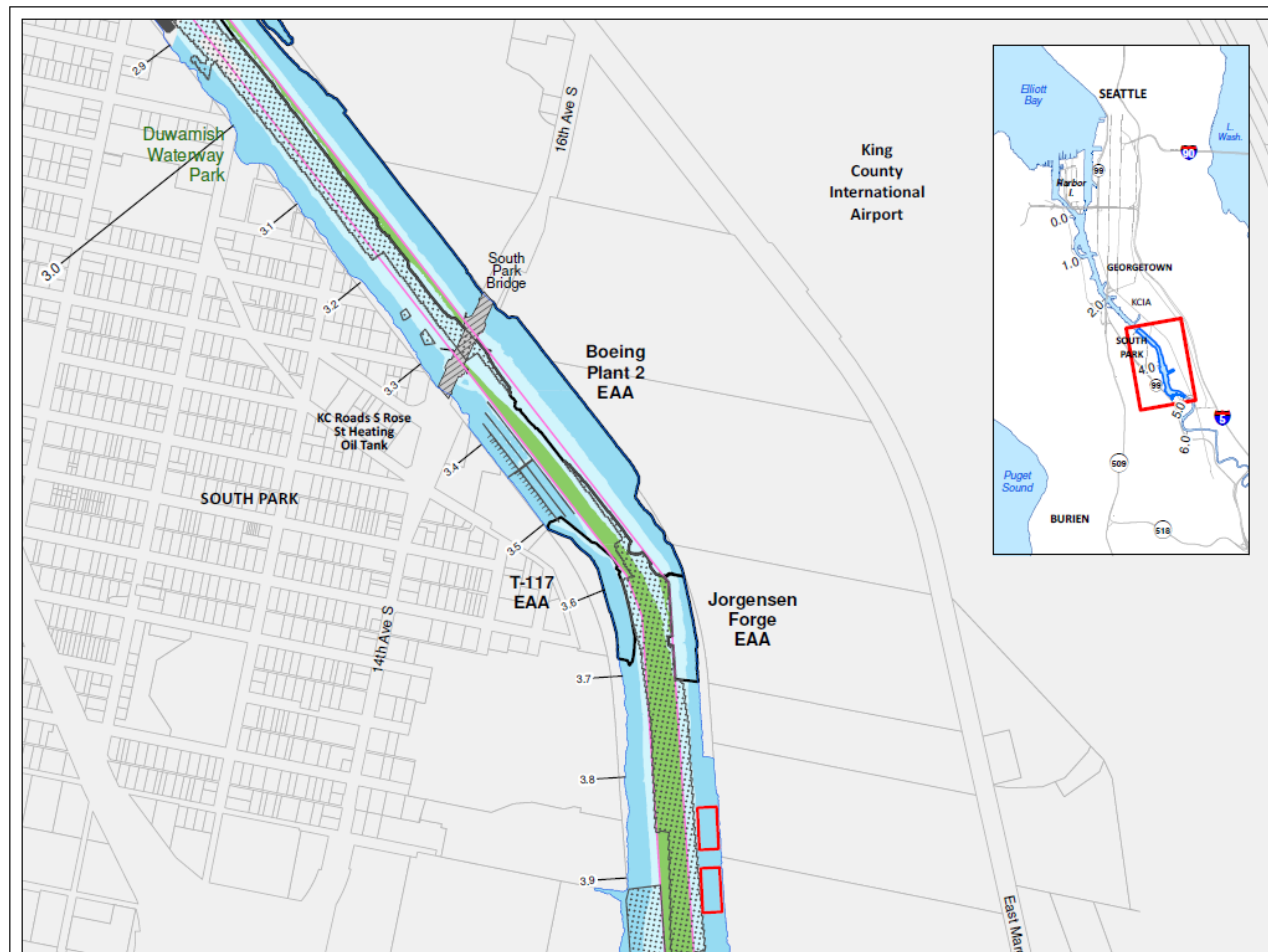
After Phase 2, engineering design begins. Combined chemical data will...

- Define areas where active cleanup is required
- Define actions to be taken (dredge, dredge and cap, cap, enhanced natural recovery)

...enough to support 30% design - **PRELIMINARY**

Quality Assurance Project Plan (QAPP) for Phase 2 Pre-Design Investigation Sampling for Upper Reach

# Example of map (QAPP map 1-1) Overview

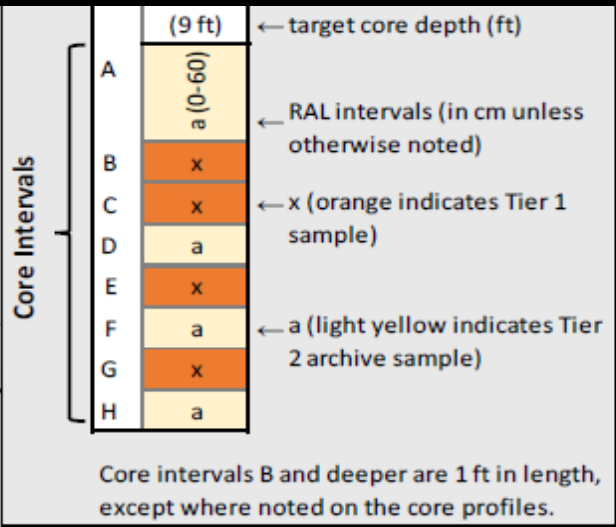


What is in the plan? Where is it shown in the maps?

- Overview map shows
- Intertidal areas (darker blue)
  - Subtidal areas (light blue)
  - Navigation channel shoal areas (green)
  - Early Action Areas
  - Carbon Pilot Study intertidal plots
  - Recovery Category 1 areas (spotted)

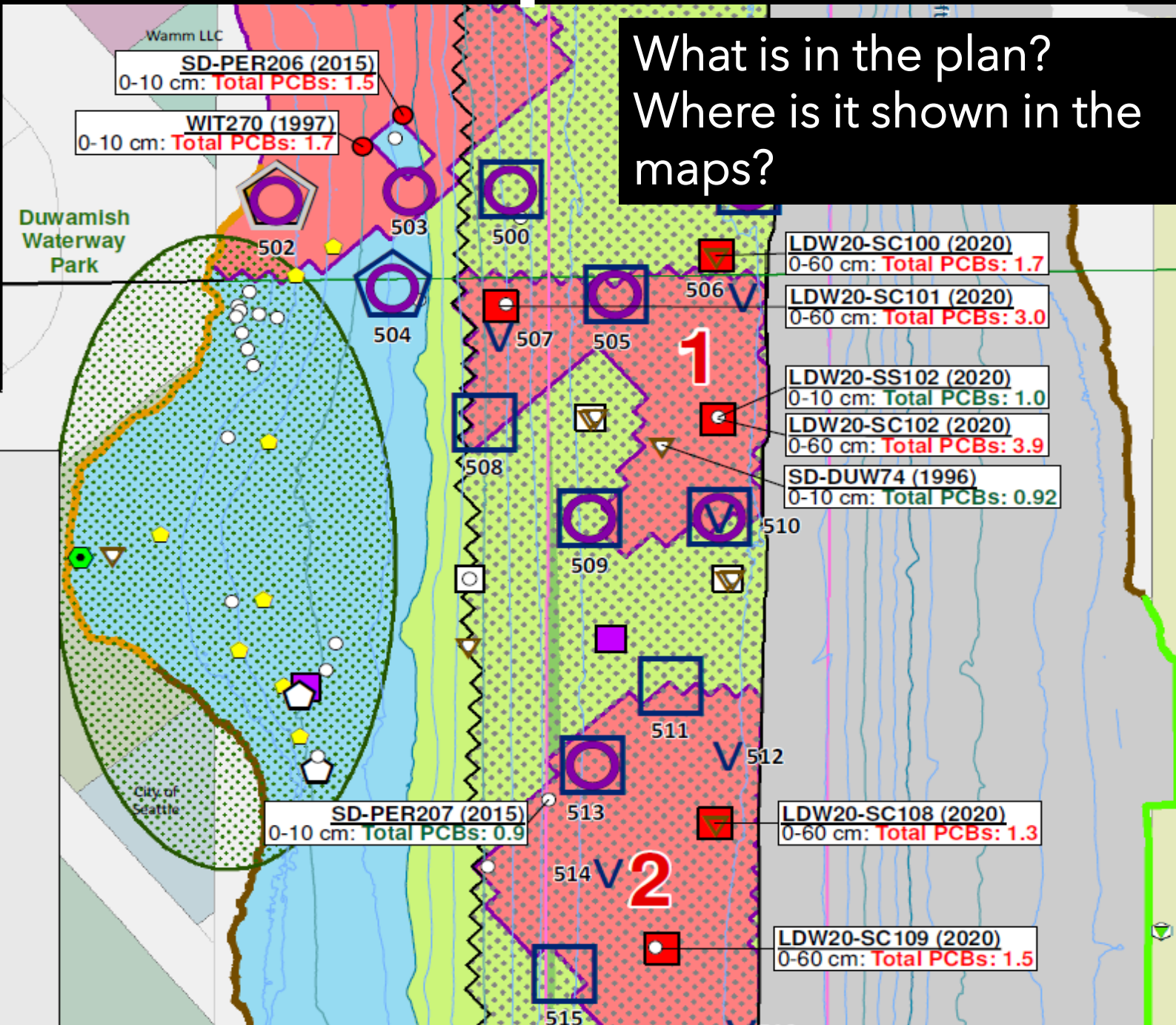
# Sediment sample locations

What is in the plan?  
Where is it shown in the maps?



## Proposed sampling locations

- 0-10 cm
- 0-45 cm
- 0-60 cm
- 0-45 cm Archive
- Shoaling area intervals
- Vertical
- Area with RAL exceedances



**Area 1**

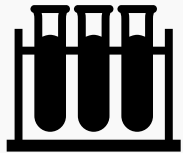
	506	507	510
	-16.8	-11.6	-17.2
	(9 ft)	(6 ft)	(8 ft)
A	a (0-60)	a (0-60)	x (0-60)
B	x	x	x
C	x	x	x
D	a	a	a
E	x	x	x
F	a		a
G	x		x
H	a		

**Area 2**

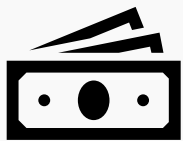
	512	514	516
	-16.8	-17.2	-15.7
	(9 ft)	(8 ft)	(10 ft)
A	a (0-60)	a (0-60)	a (0-60)
B	x	x	x
C	x	x	x
D	a	a	a
E	x	x	x

## Quality Assurance Project Plan (QAPP) for Phase 2 Pre-Design Investigation Sampling for Upper Reach

### What is "tiering"?



Tiering is when you collect more samples than you think you'll need, send those you know you need to lab for analysis (Tier 1) and save the rest (Tier 2) in freezer, then use Tier 1 lab results to decide which Tier 2 samples need lab analysis.



Tiering is done because field work is expensive (boats, equipment, staff).

## Quality Assurance Project Plan (QAPP) for Phase 2 Pre-Design Investigation Sampling for Upper Reach

### How will the boundaries change when the Phase 2 sample results come in?

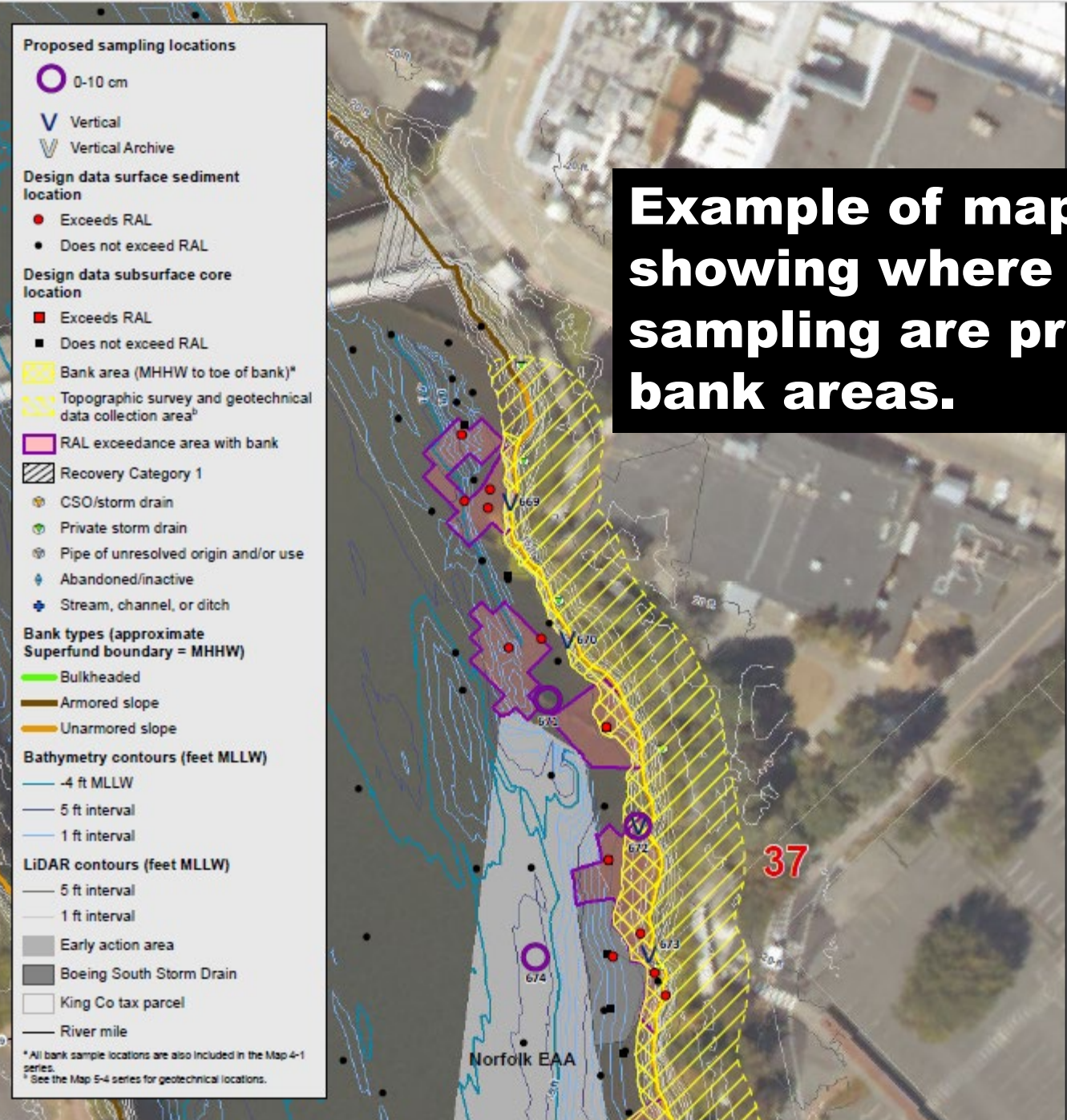
The results may increase the pink areas or may reduce them.

Other information will help finalize boundaries for design.

- Geostatistical boundaries, not just interpolation
- Phase 3 chemical data, if necessary
- Results of biological testing, where testing option used.
- Physical issues: berthing areas, navigation channel, structures

Engineers will consider how to make the outline simpler while including the sediment cleanup areas as required.

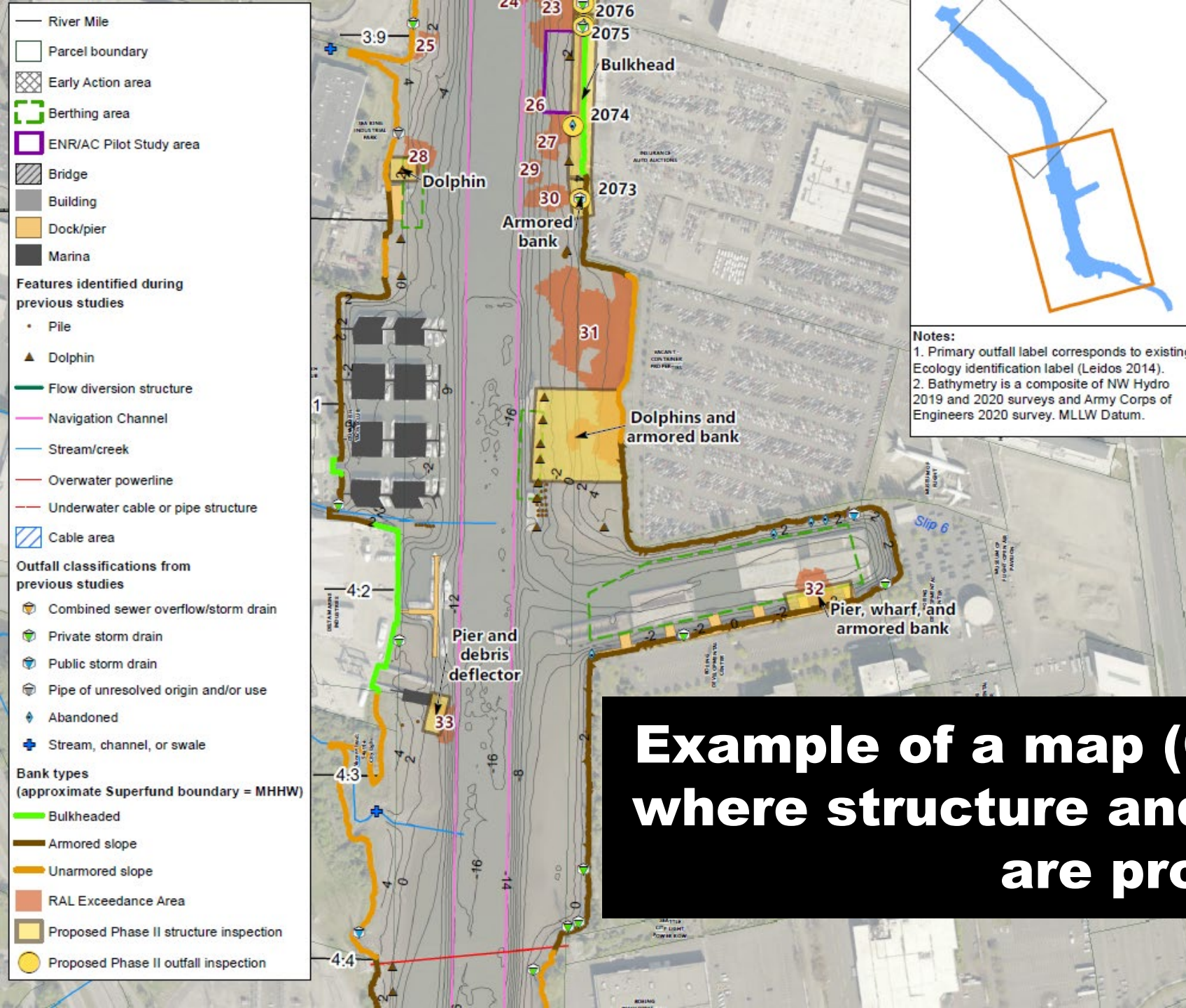
**Example of map (QAPP 5-1) showing where surveys and sampling are proposed in bank areas.**



What is in the plan? Where is it shown in the maps?



What is in the plan? Where is it shown in the maps?





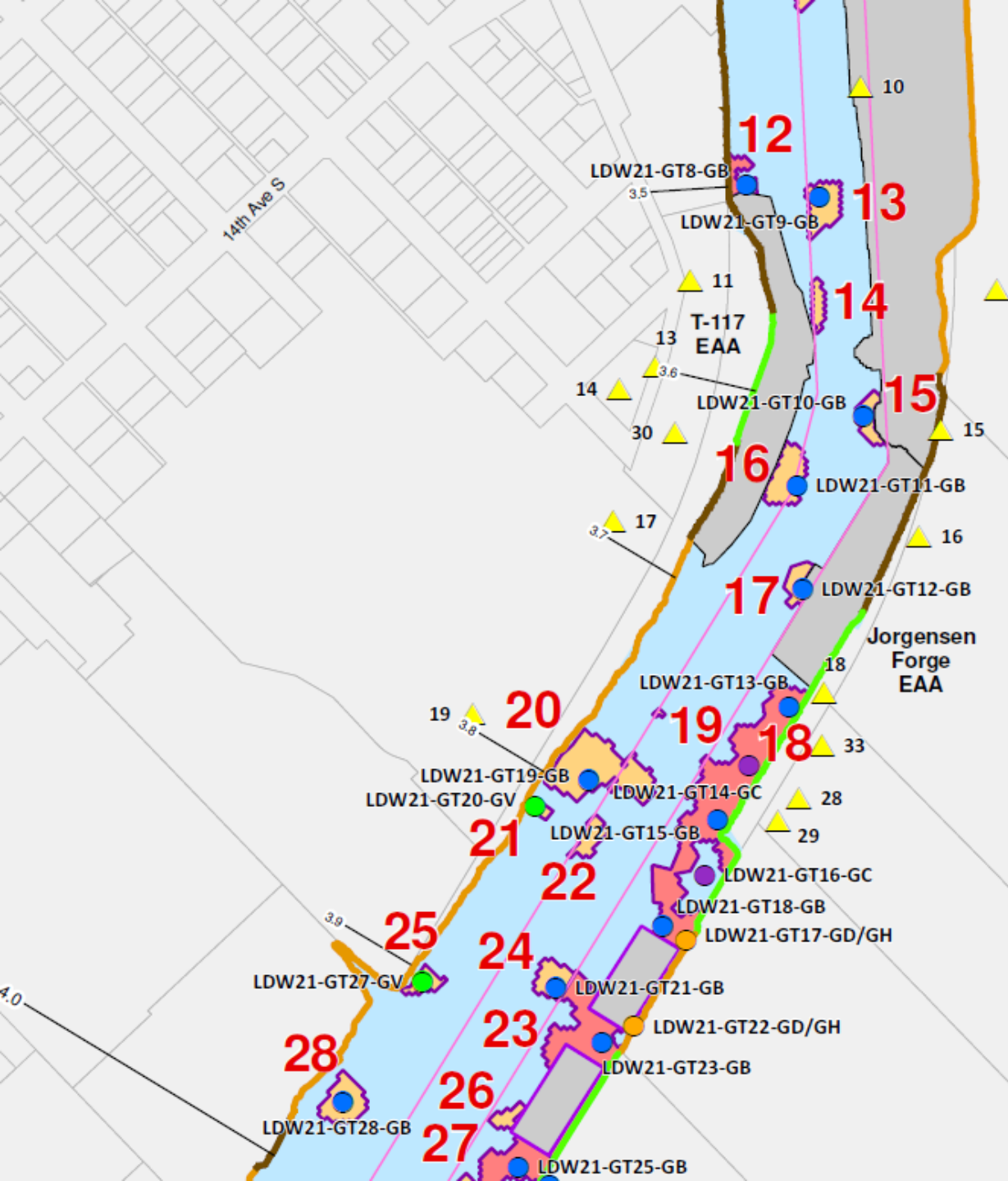
## Quality Assurance Project Plan (QAPP) for Phase 2 Pre-Design Investigation Sampling for Upper Reach

The Plan (QAPP) also says where survey and geotechnical work is proposed.

Types of geotechnical data collection areas and methods

- CPT (cone penetrometer test)
- Borings
- Vane Shear Tests
- Hand Auger or DCP

**Example of a map (QAPP 5-4a) showing where geotechnical work is proposed in 2021**



**Geotechnical data collection areas**

- Proposed CPT test location
- Proposed geotechnical boring location
- Proposed hand auger or DCP location
- Proposed Vane shear test location
- Historical geotechnical studies

**RAL exceedance areas**

- RAL exceedance area with bank
- RAL exceedance area without bank or with habitat constructed on bank

**Bank types (approximate Superfund boundary = MHHW)**

- Bulkheaded
- Armored slope
- Unarmored slope

**Other features**

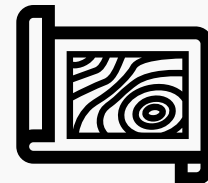
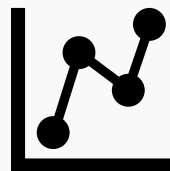
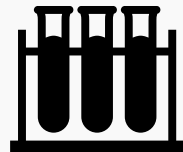
- Early Action Area
- AC Pilot plots
- King Co tax parcel
- Navigation Channel
- River mile

What is in the plan? Where is it shown in the maps?

## Quality Assurance Project Plan (QAPP) for Phase 2 Pre-Design Investigation Sampling for Upper Reach

Roundtable input to EPA is welcome (by April 12). *This is not a formal public comment period.*

- Are the samples in the right place?
- Are there enough samples?
- Are they testing for the right chemicals?
- Are the "cores" deep enough?
- Is the tiering approach reasonable?



# Roundtable questions and comments to EPA on the Quality Assurance Project Plan (QAPP) for Phase 2 Pre-Design Investigation Sampling for Upper Reach



# Lower Duwamish Waterway Technical Updates

Comment Period Open: Explanation of Significant Differences for cPAHs

[Did you watch the ESD webinar \(or read the summary\)?](#)

Explanation of Significant Differences webinar materials (English, Vietnamese, Spanish, and Khmer) can be found on the Lower Duwamish Waterway Roundtable Website: <https://www.duwamishwaterwayroundtable.org/trainingmaterials>

## A. Why this topic matters:

EPA is proposing changes to the cPAH levels in the cleanup plan to incorporate updated health risk information. These changes are described in a proposed Explanation of Significant Differences (ESD).

**B. Comment Period Open:** Interested Roundtable members can provide written feedback for EPA to consider by April 6.

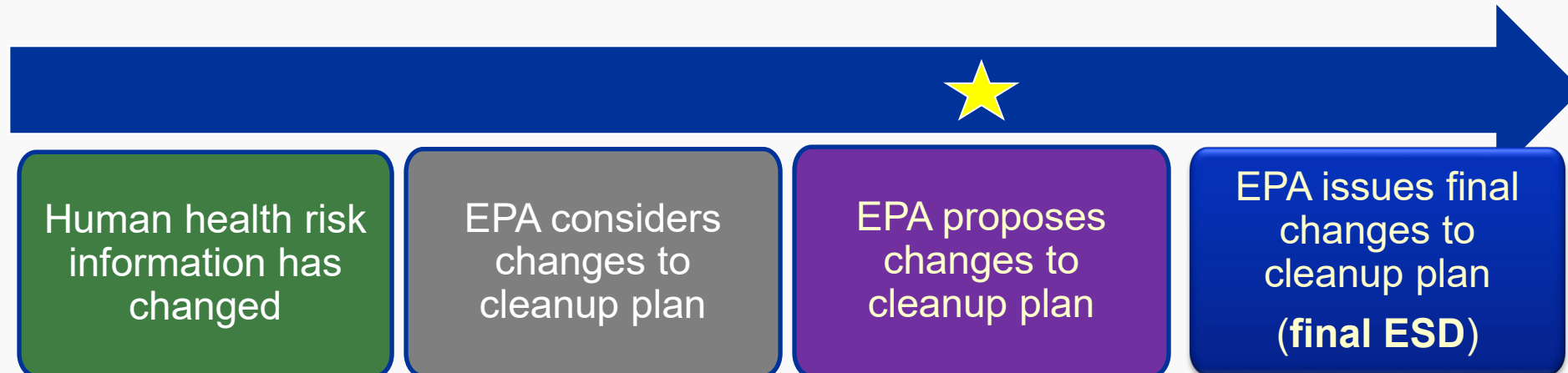
# Proposed ESD (Explanation of Significant Differences): Why is one proposed?



Based on current studies, EPA updated the health info for benzo(a)pyrene (BaP) in the national database. BaP is a carcinogenic PAH.

EPA considered how the BaP change impacts the cleanup plan.

With input from Roundtable, EPA decided to issue a **proposed ESD** for public comment.



# Why did the benzo(a)pyrene value change?



- EPA's Integrated Risk Information System (IRIS) updated their BaP assessment in 2017
- EPA's IRIS program worked for over 10 years on this assessment
- IRIS assessments are reviewed with many agencies and scientists
- Current studies show that BaP's **cancer slope factor** is about seven times less than previous estimates.

## What is the EPA IRIS Program?

- **Created in 1985** to provide a database of human health assessments for chemicals
- **Goal:** Foster consistency in the evaluation of chemical toxicity across EPA

# Roundtable questions and comments on the ESD for cPAHs







# Other Site News and Updates

---

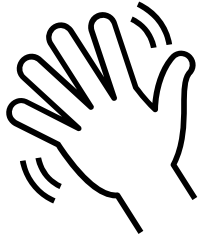
1. Institutional Controls (IC) Updates from Community Health Advocates (CHAs)

2. Brief updates from Roundtable Members

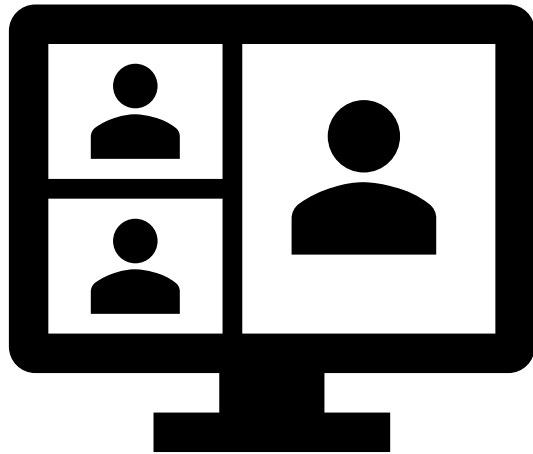


# Comments and Questions from Observers

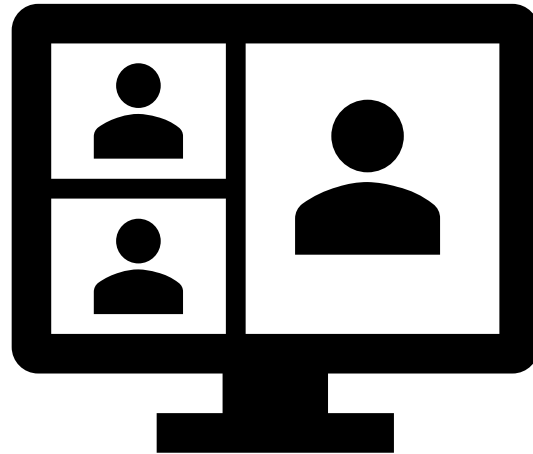
---



Option 1: Sign off and end your meeting experience. Thank you for coming!



Option 2: Stay in this meeting space for an optional meeting debrief (language coordination, facilitation, meeting materials, presentations, etc.)



Option 3: Join a breakout room for a continued discussion of cleanup topics with other Roundtable members.

# Ending the meeting: 3 options for you

---



Thank you for  
participating

More questions? Contact:

Rachel Aronson  
610-453-4122 (cell)  
[raronson@triangleassociates.com](mailto:raronson@triangleassociates.com)

Elly Hale  
206-553-1215  
[hale.elly@epa.gov](mailto:hale.elly@epa.gov)