

Harbor Island's East Waterway

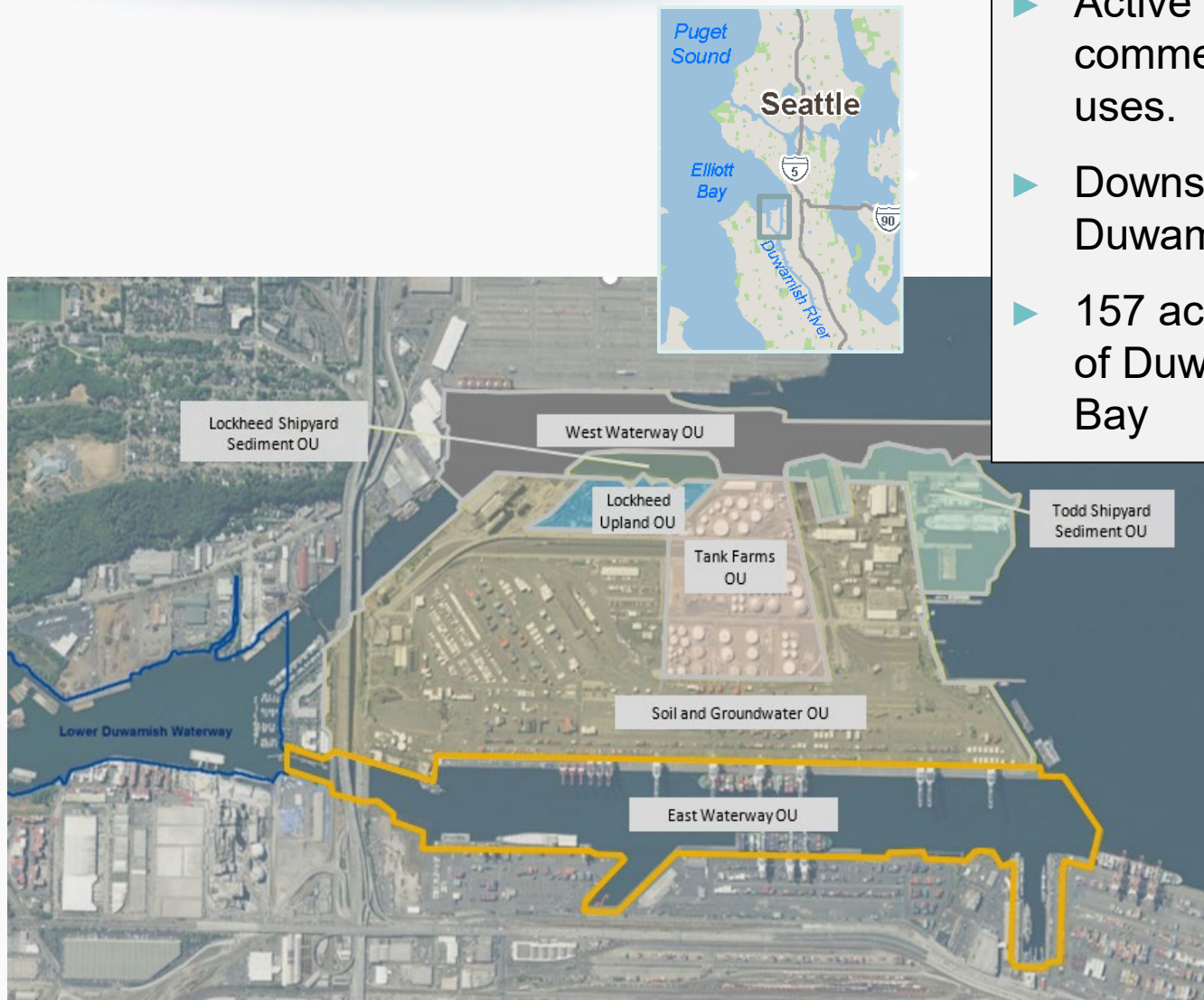
An introduction

Harbor Island Superfund site, Seattle, Washington
Ravi Sanga, Project Manager



Site History

- ▶ East Waterway is an Operable Unit of the Harbor Island Superfund site.
- ▶ Active port with both commercial and industrial uses.
- ▶ Downstream of the Lower Duwamish Superfund site.
- ▶ 157 acre at the confluence of Duwamish River & Elliott Bay

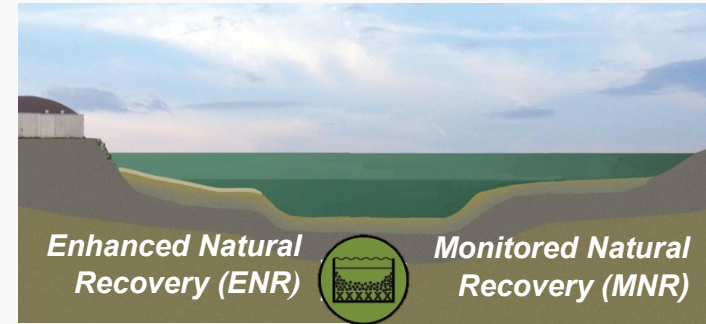
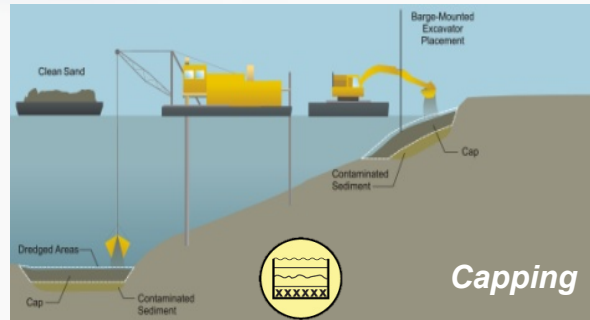
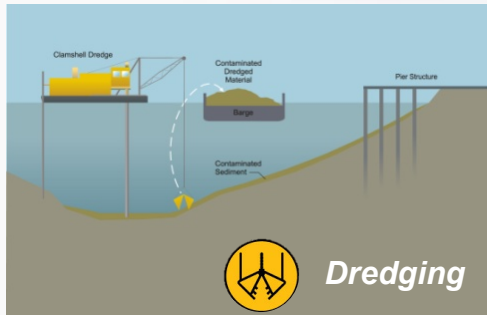


Contaminants of Concern



- ▶ Contaminants at East Waterway include PCBs, arsenic, PAHs, dioxins/furans, mercury, and tributyltin.
- ▶ Average depth of contamination is 3 feet; and up to 15 feet in two locations (Slip 27, Slip 36).
- ▶ Risk Assessment
 - ▶ The results of the human health risk assessment indicated that the highest risks to people are from eating resident fish and shellfish
 - ▶ Contaminant concentrations pose unacceptable risk to the environment.

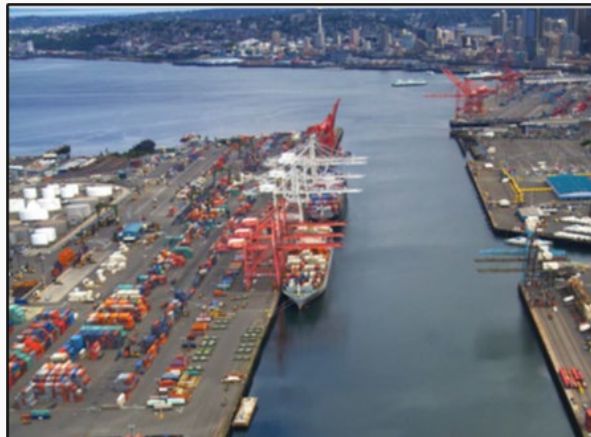
Technologies included in Alternatives considered in Feasibility Study



Removal

Containment

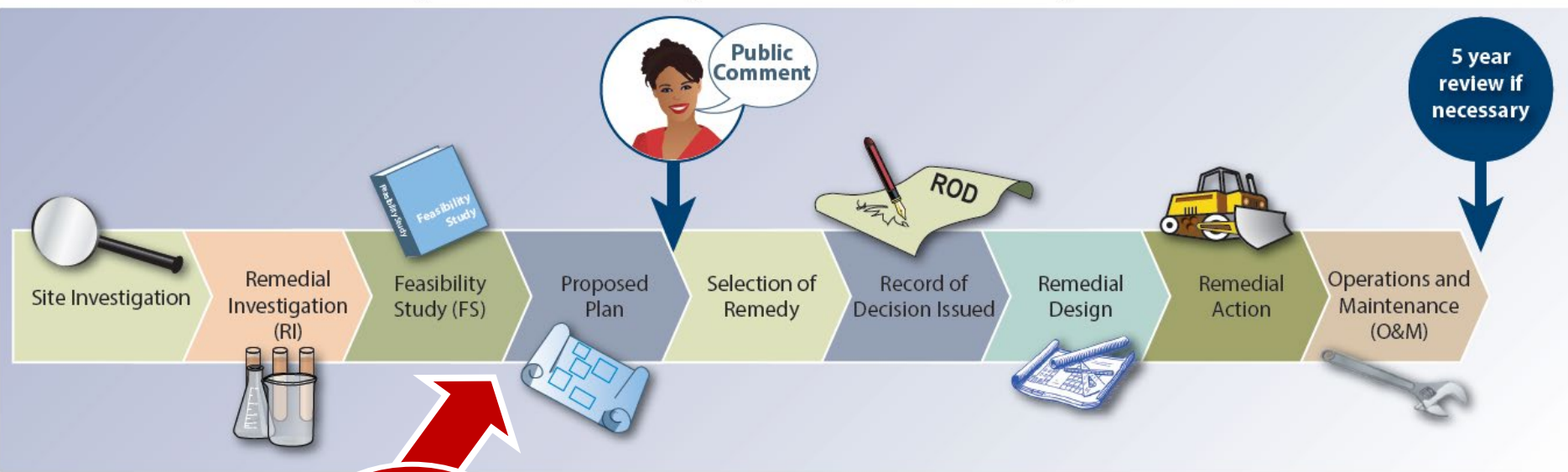
Natural Recovery



Amendments in some caps and sand covers



Steps in the Superfund Cleanup Process



**We
Are
Here**

Questions

